

# Materials Science and Engineering Survey

Sponsored by the University Materials Council

Arizona State University  
Auburn University  
Boise State University  
California Polytechnic State University  
Carnegie Mellon University  
Clemson University  
Colorado School of Mines  
Cornell University  
Drexel University  
Georgia Institute of Technology  
Iowa State University  
Johns Hopkins University  
Lehigh University  
Massachusetts Institute of Technology  
Michigan State University  
New Mexico Institute of Mining and  
Technology  
New York State College of Ceramics @  
Alfred University

North Carolina State University  
Ohio State University  
Oregon State University  
Pennsylvania State University  
Purdue University  
Rensselaer Polytechnic Institute  
Rutgers, The State University of New  
Jersey  
State University of New York at  
Binghamton  
Stony Brook University  
The University of Texas at Austin  
University of Alabama  
University of Alabama at Birmingham  
University of Alberta  
University of Connecticut  
University of Delaware  
University of Florida  
University of Illinois

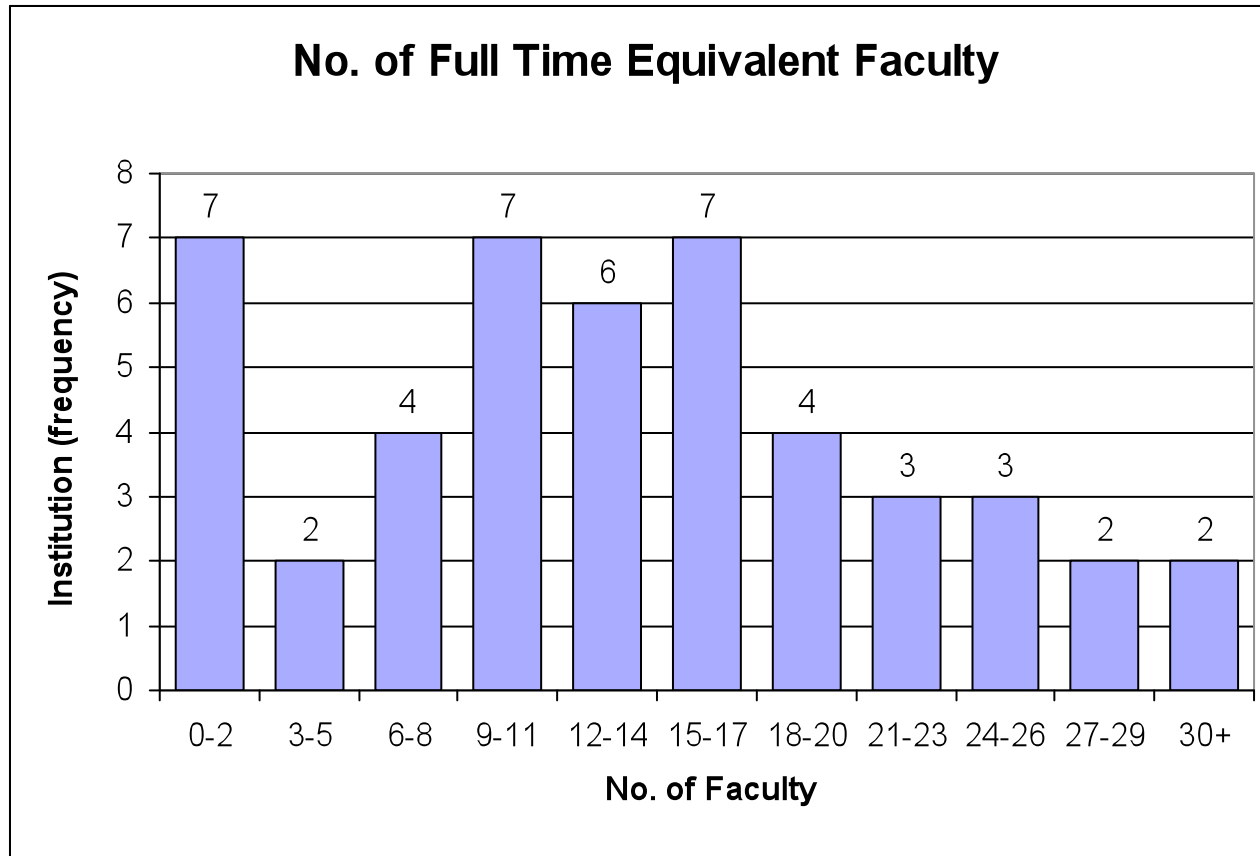
University of Kentucky  
University of Maryland  
University of Michigan  
University of Missouri-Rolla  
University of North Texas  
University of Pennsylvania  
University of Tennessee, Knoxville  
University of Texas at Arlington  
University of Toronto  
University of Virginia  
University of Wisconsin-Madison  
Virginia Polytechnic Institute and  
State University  
Washington State University  
Worcester Polytechnic Institute

## Participating Universities

Fall 2007 Statistics

# Materials Science and Engineering Survey

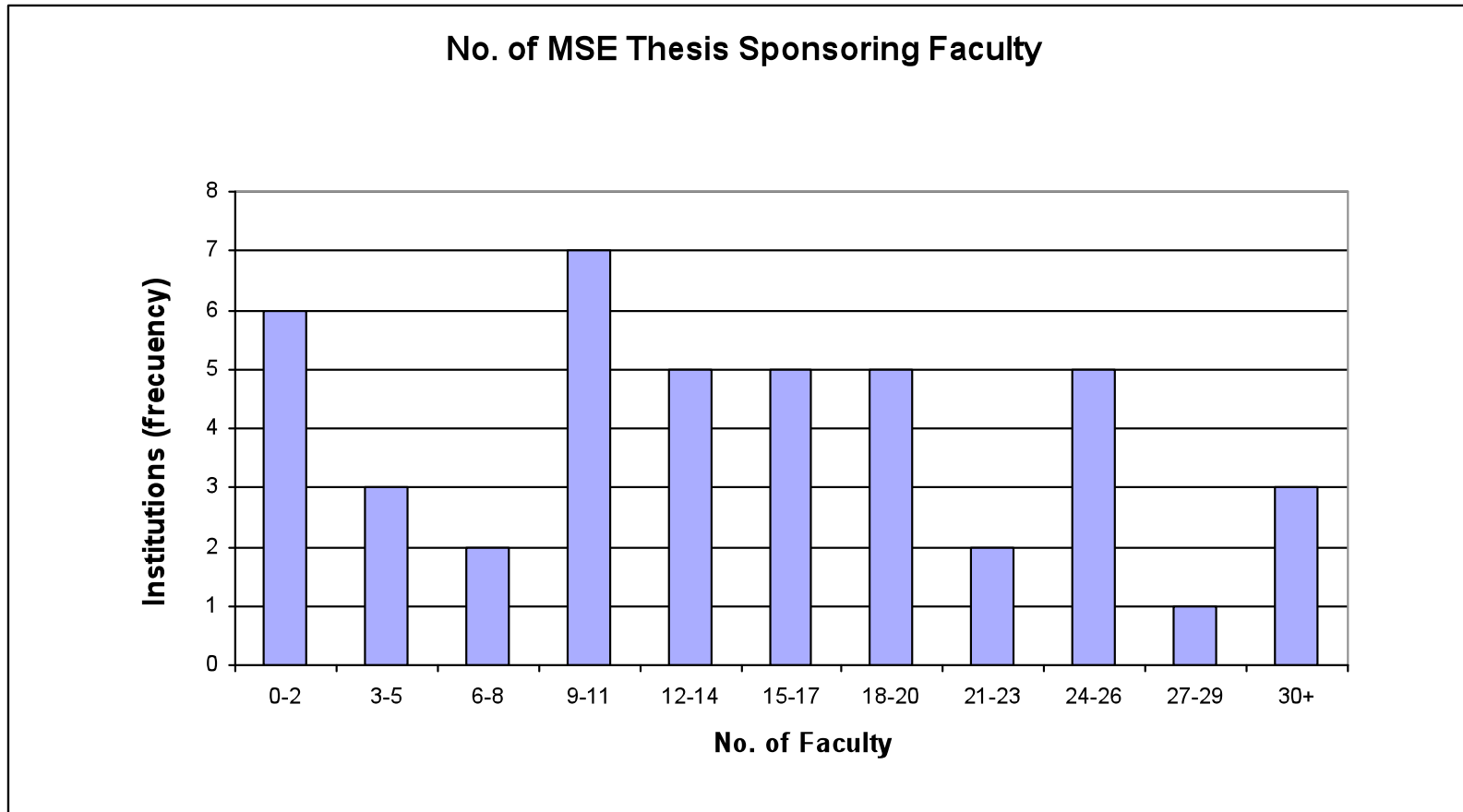
Sponsored by the University Materials Council



Fall 2007 Statistics

# Materials Science and Engineering Survey

Sponsored by the University Materials Council



Fall 2007 Statistics

# Materials Science and Engineering Survey

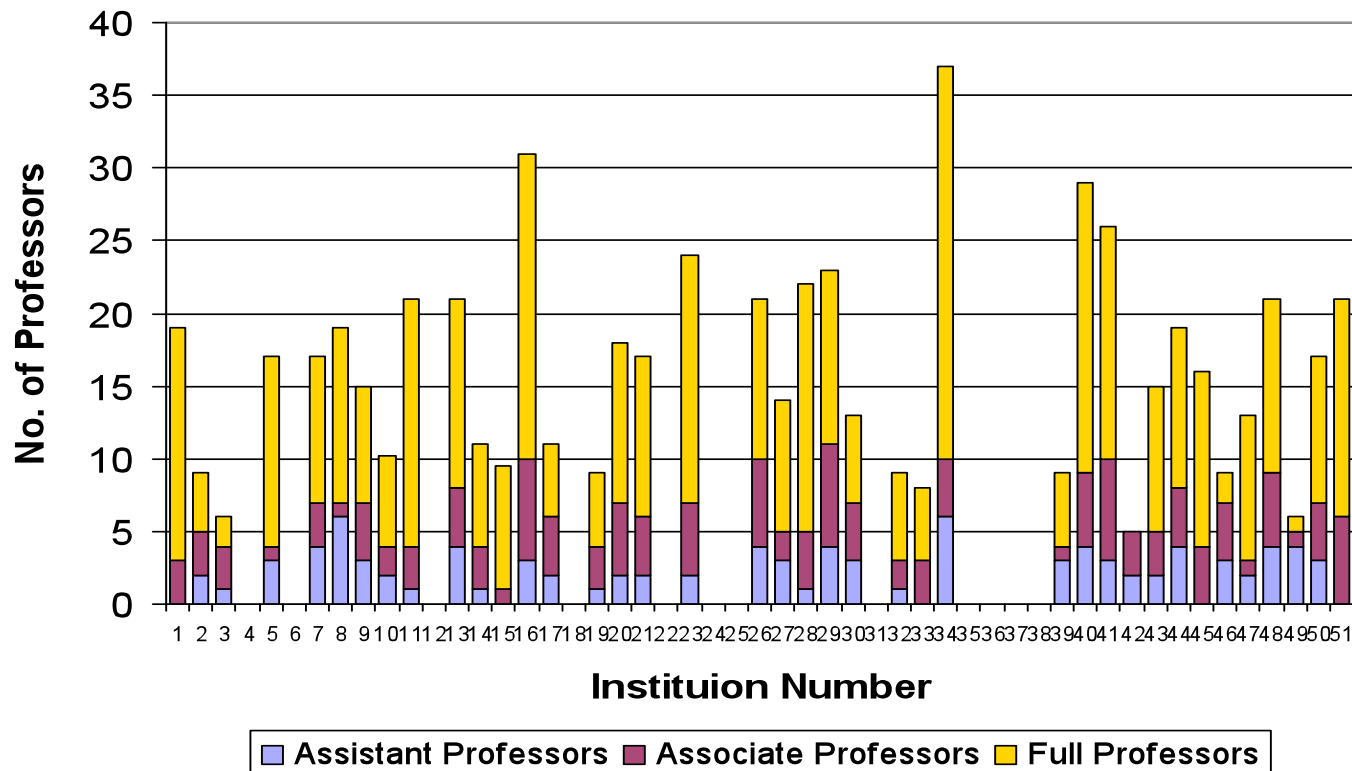
Sponsored by the University Materials Council

Average Full Professors: 10.35

Average Associates Professors: 3.48

Average Assistant Professors: 2.49

## No. of FTE Faculty

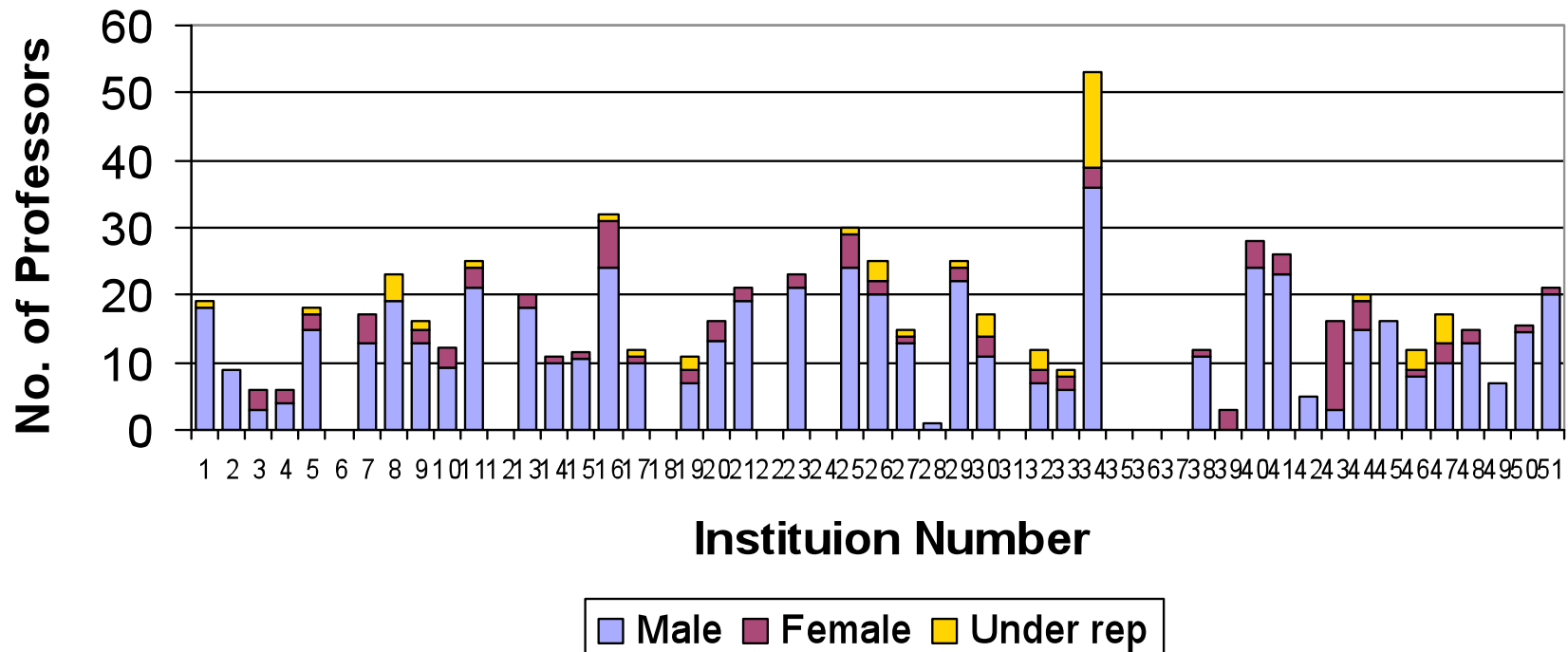


Fall 2007 Statistics

# Materials Science and Engineering Survey

Sponsored by the University Materials Council

## FTE Faculty

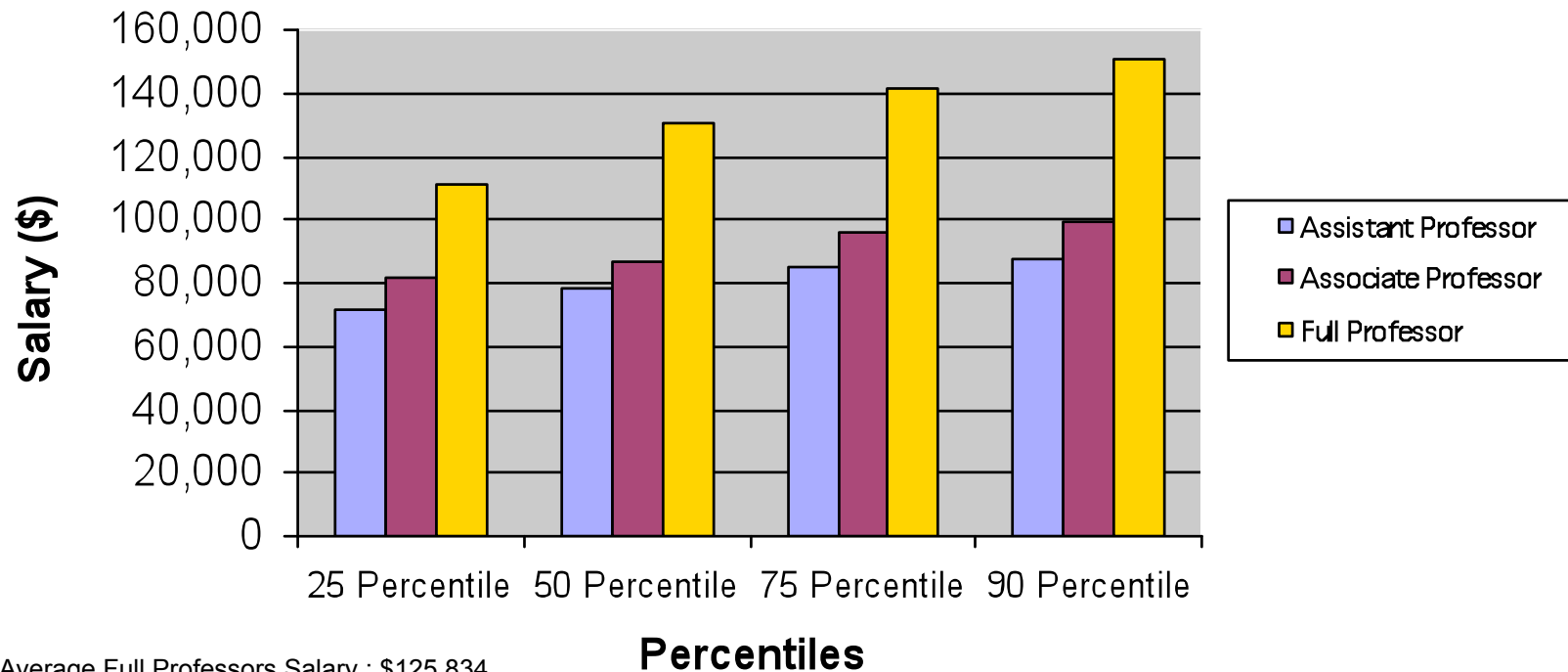


Fall 2007 Statistics

# Materials Science and Engineering Survey

Sponsored by the University Materials Council

## Average Salary



Average Full Professors Salary : \$125,834

Average Associates Professors Salary: \$87,660

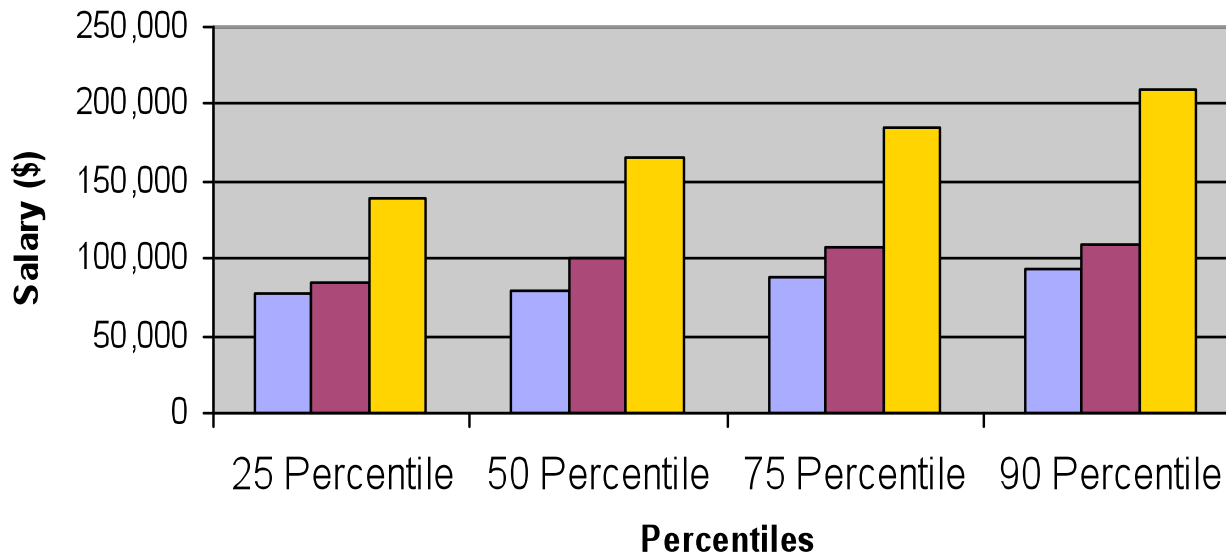
Average Assistant Professors Salary : \$73,834

Fall 2007 Statistics

# Materials Science and Engineering Survey

Sponsored by the University Materials Council

## Upper Decile of Each Percentile Group



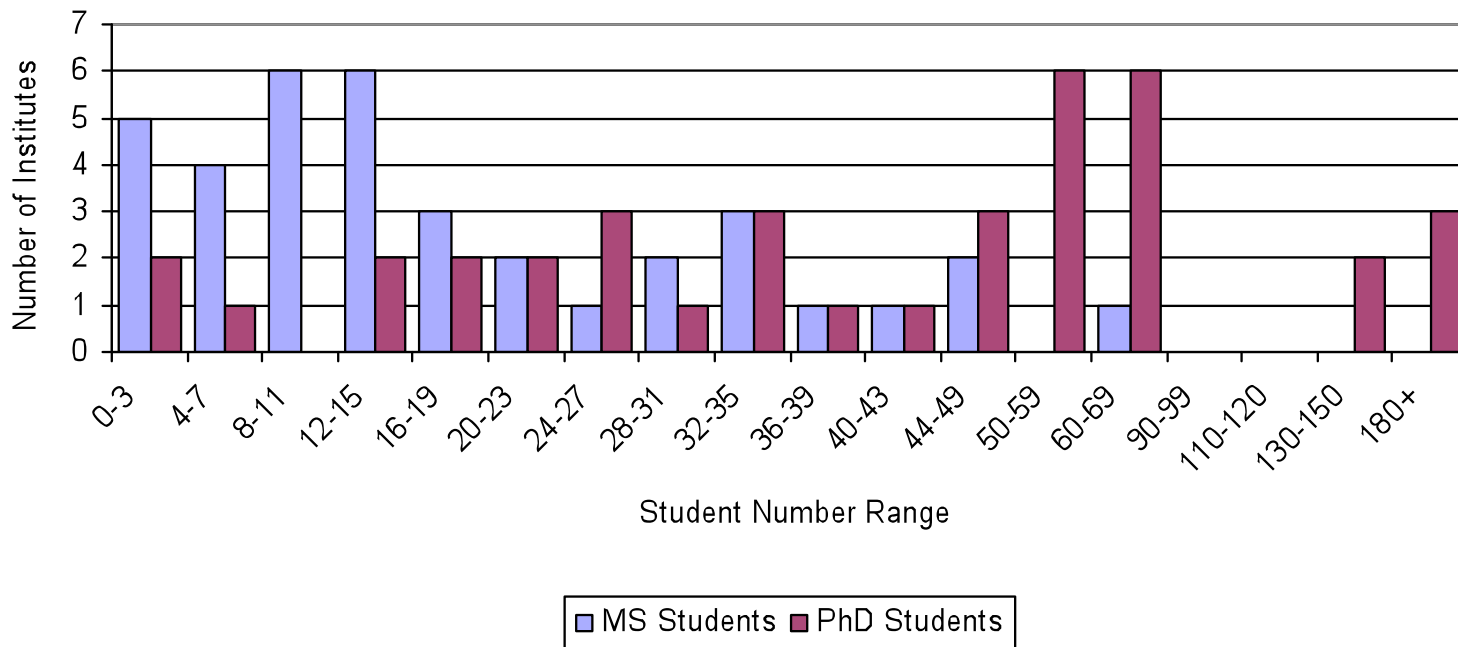
Assistant Professor Associate Professor Full Professor

Fall 2007 Statistics

# Materials Science and Engineering Survey

Sponsored by the University Materials Council

No. of MS & PhD Students

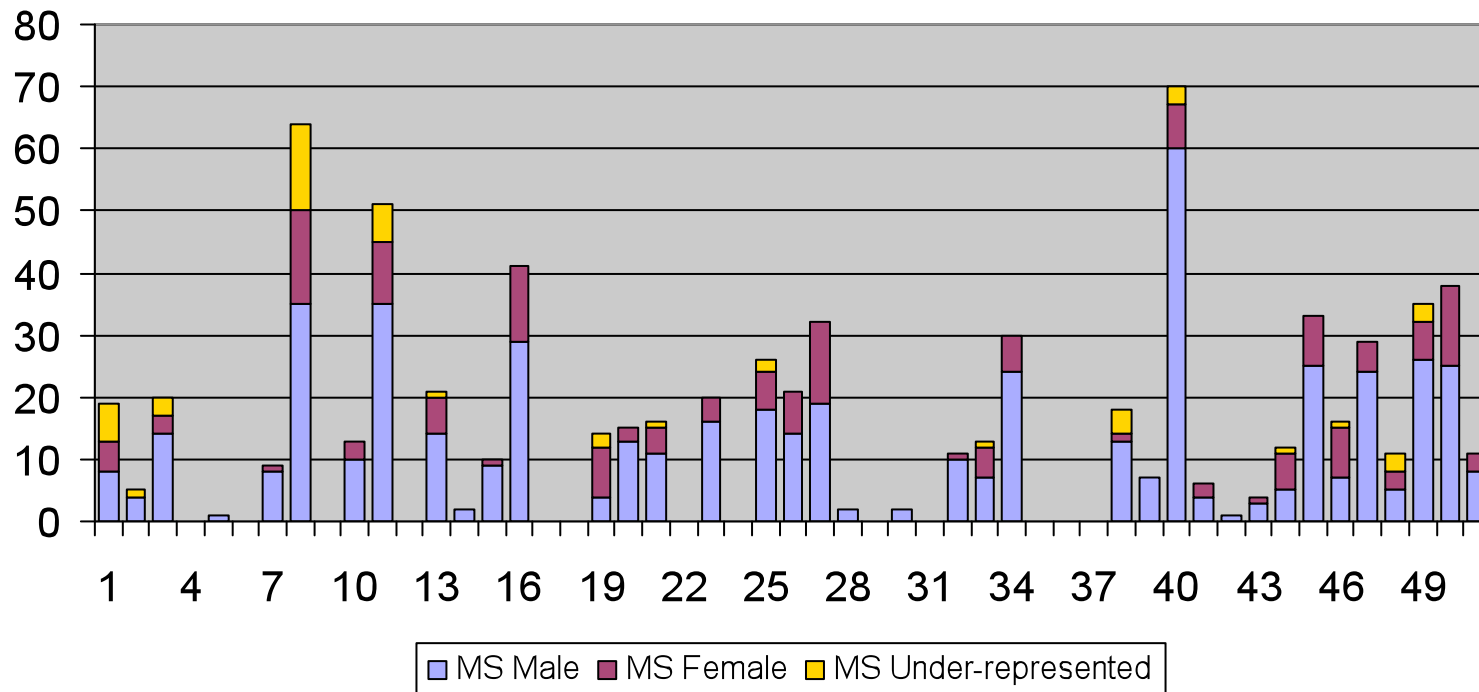


Fall 2007 Statistics

# Materials Science and Engineering Survey

Sponsored by the University Materials Council

## Total MS Students

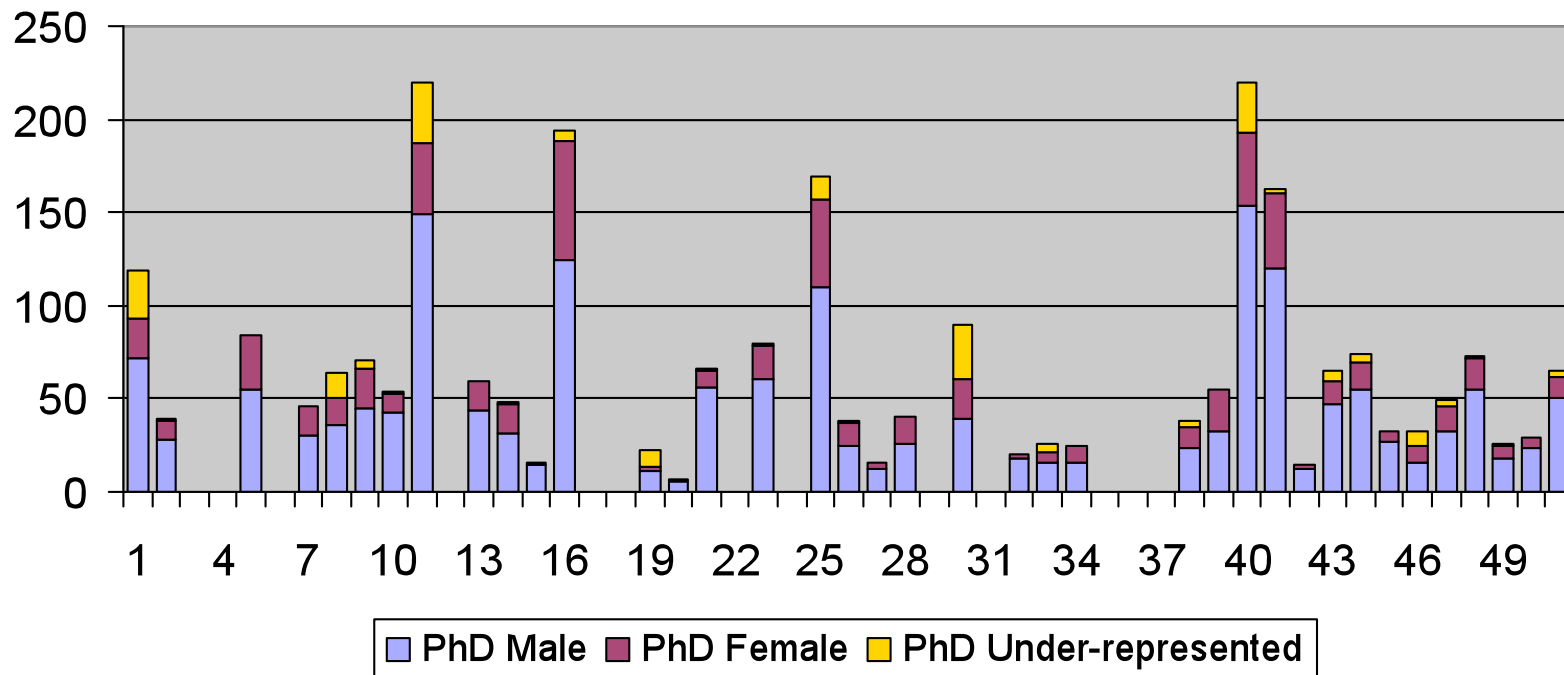


Fall 2007 Statistics

# Materials Science and Engineering Survey

Sponsored by the University Materials Council

## Total PhD Students

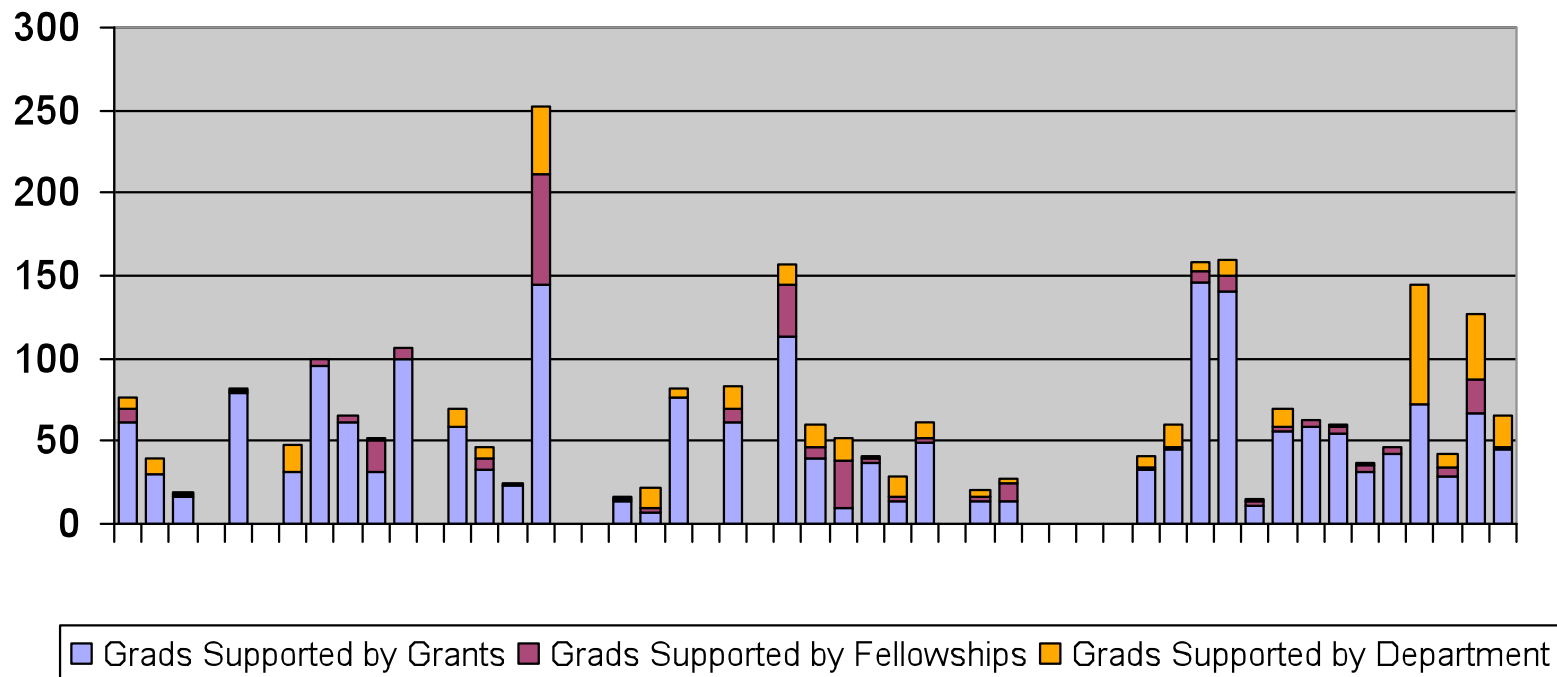


Fall 2007 Statistics

# Materials Science and Engineering Survey

Sponsored by the University Materials Council

## Number of Graduate Students

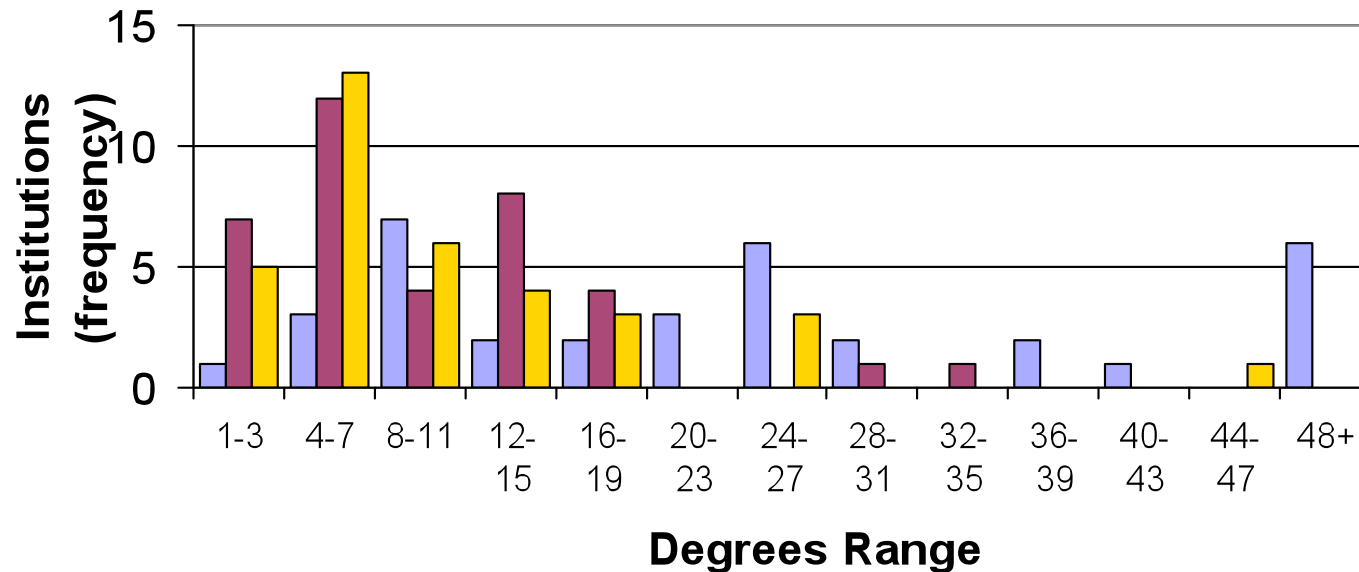


Fall 2007 Statistics

# Materials Science and Engineering Survey

Sponsored by the University Materials Council

**2007 Degrees Awarded (BS, MS & PhD)**  
**Averages: BS 24.46, MS 9.32, PhD 9.49**



Fall 2007 Statistics

# Materials Science and Engineering Survey

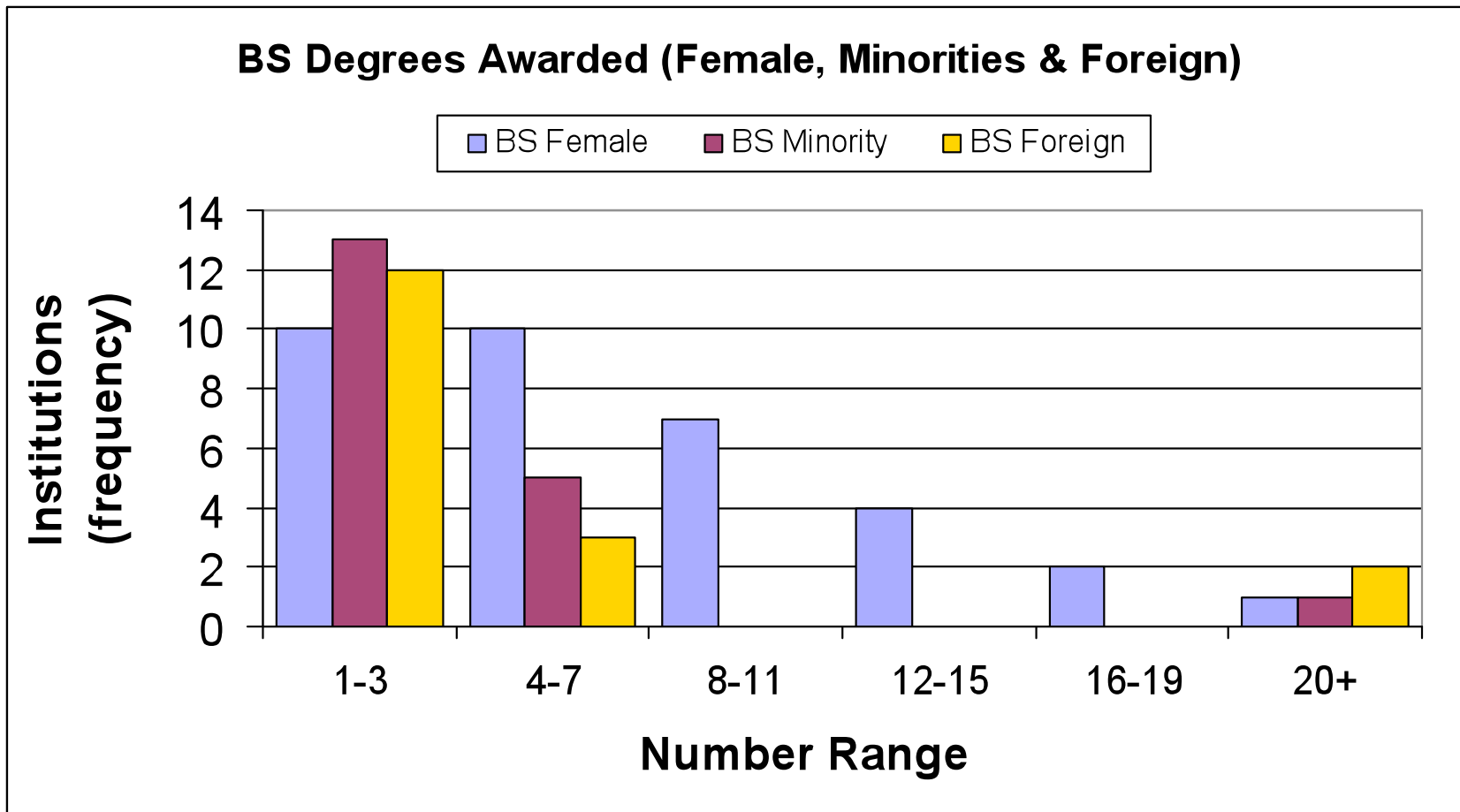
Sponsored by the University Materials Council

## Additional Data

- Average New Assistant Professor salary: \$78,648
- Average number of Postdocs: 9.92
- Average Postdoc salary: \$37,476
- Upper decile Postdoc salary: \$42,151
- Almost all schools permit 3/9 summer salary
- Average teaching assignment: **11.0 Hours**

# Materials Science and Engineering Survey

Sponsored by the University Materials Council

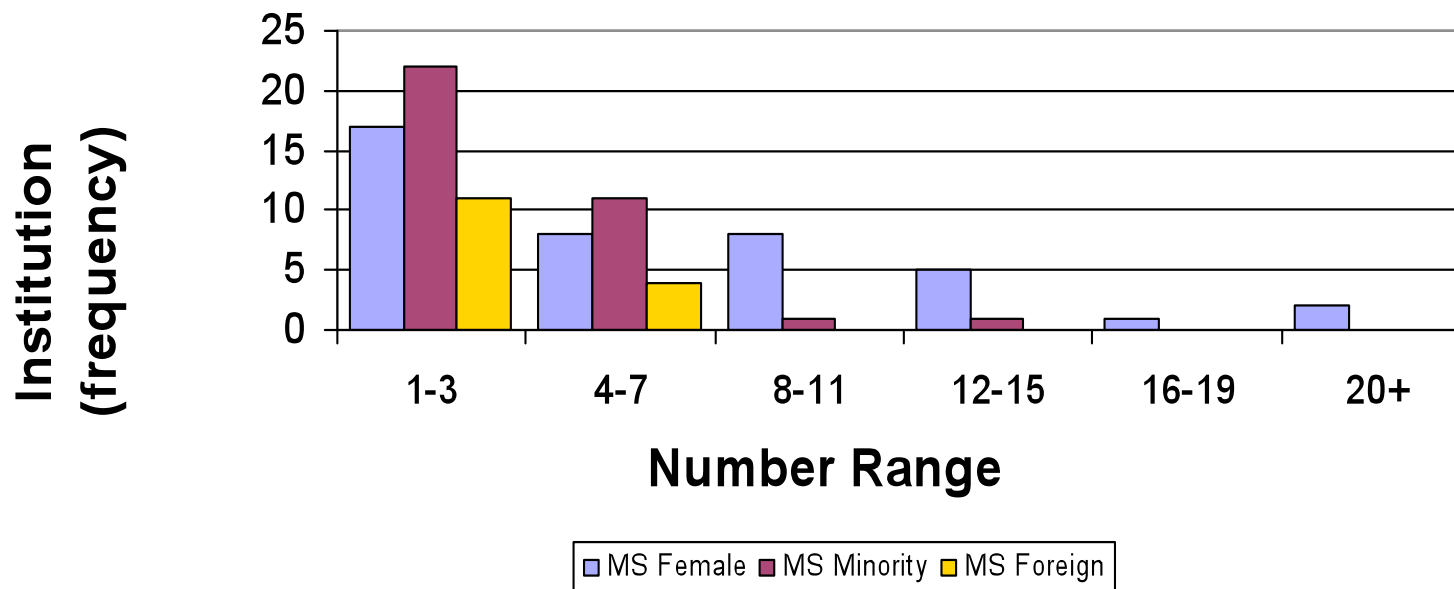


Fall 2007 Statistics

# Materials Science and Engineering Survey

Sponsored by the University Materials Council

## MS Degrees Awarded (Female, Minorities & Foreign)

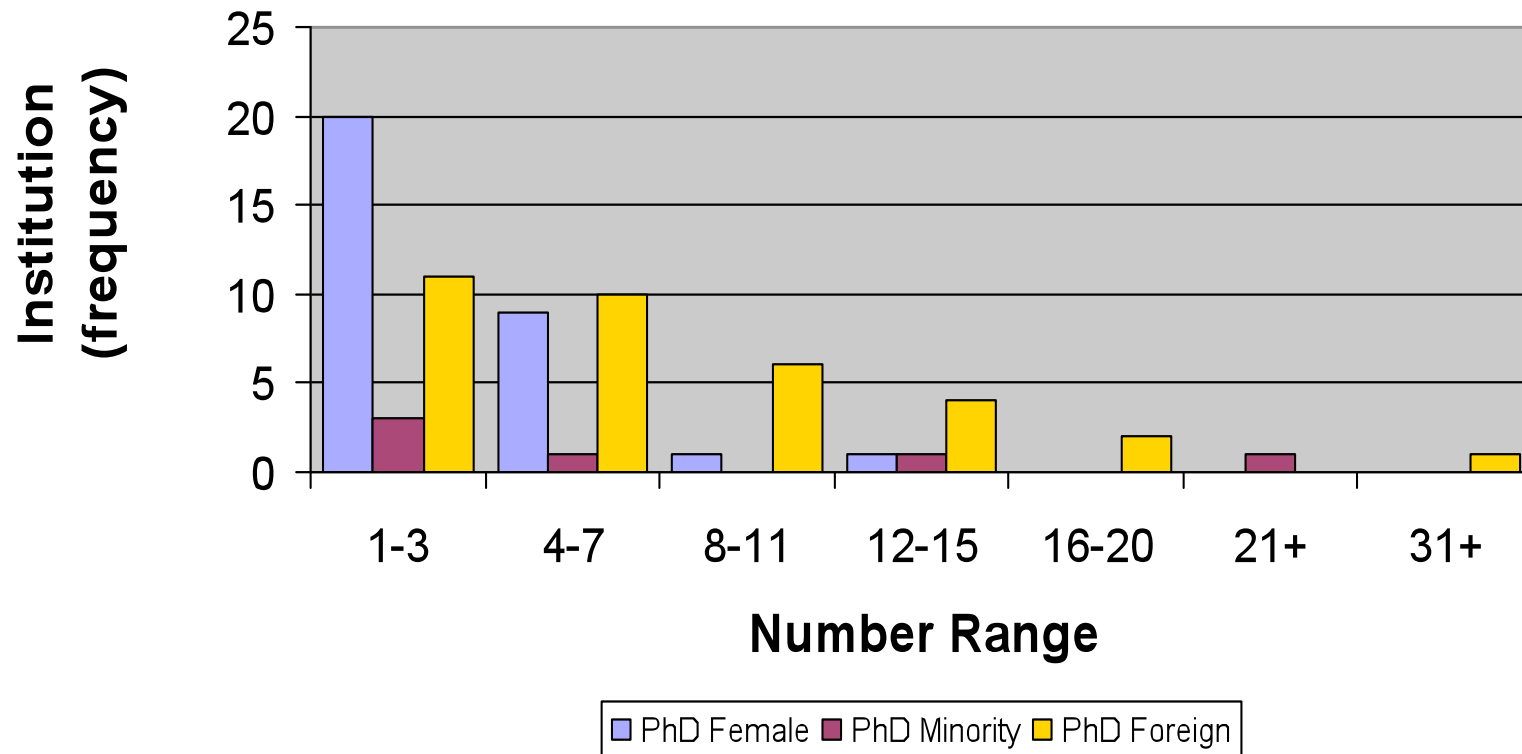


Fall 2007 Statistics

# Materials Science and Engineering Survey

Sponsored by the University Materials Council

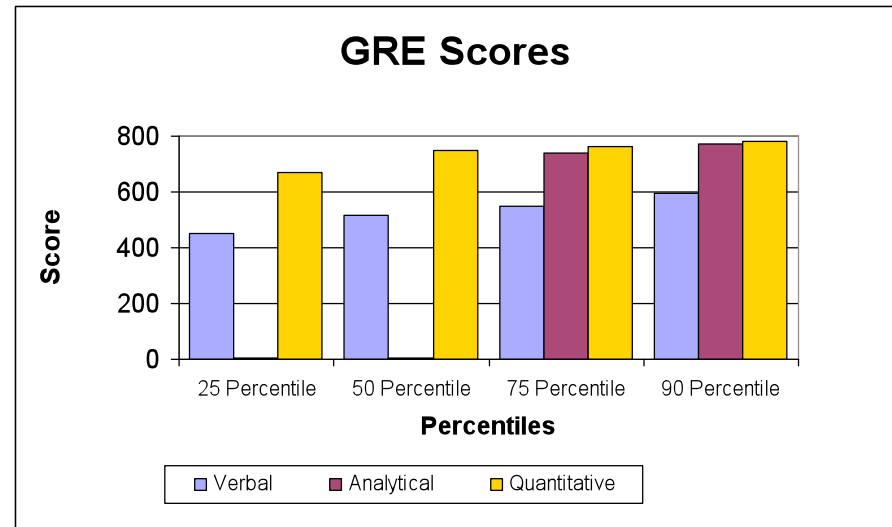
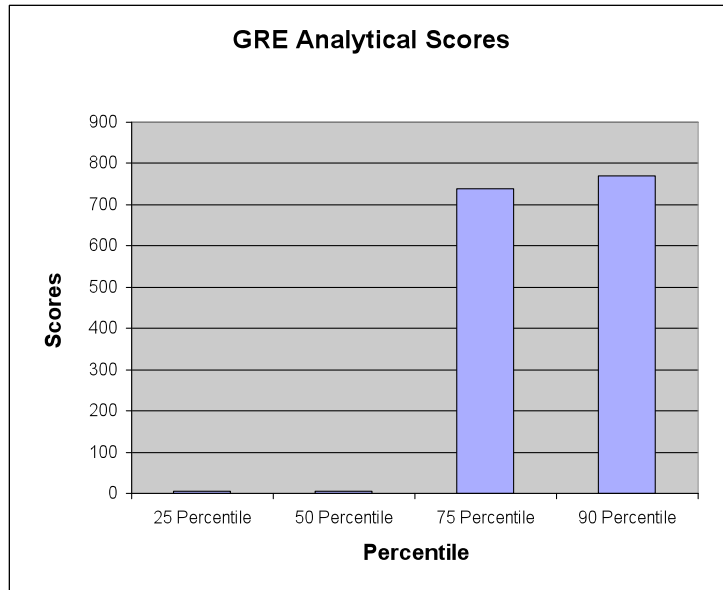
## PhD Degrees Awarded (Females, Minorities, Foreign)



Fall 2007 Statistics

# Materials Science and Engineering Survey

Sponsored by the University Materials Council



Average Verbal scores: 517

Average Analytical scores: 4.45

Average Quantitative scores: 750

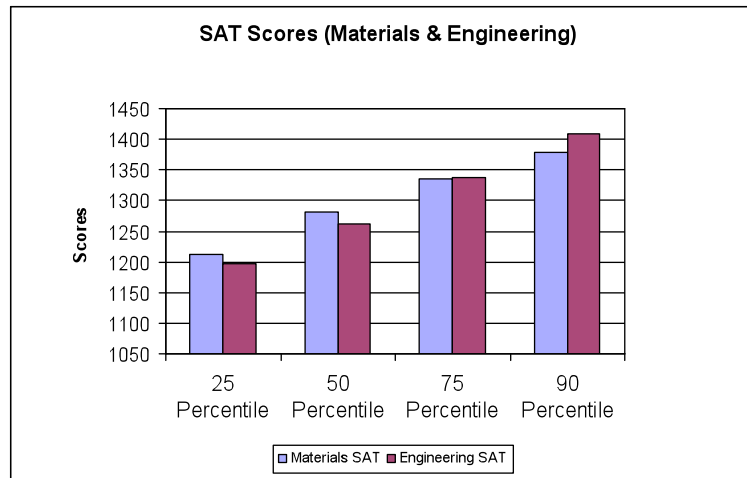
Fall 2007 Statistics

# Materials Science and Engineering Survey

Sponsored by the University Materials Council

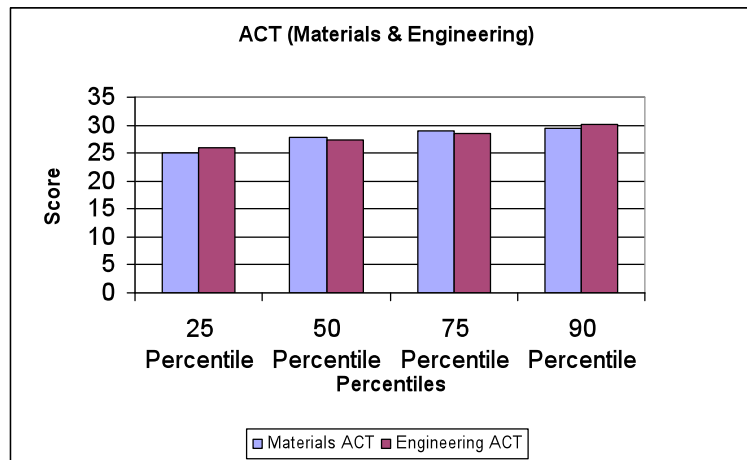
Average MSE SAT Scores: 1192.63

Average Eng. SAT Scores: 1181.06



Average MSE ACT Scores: 23.42

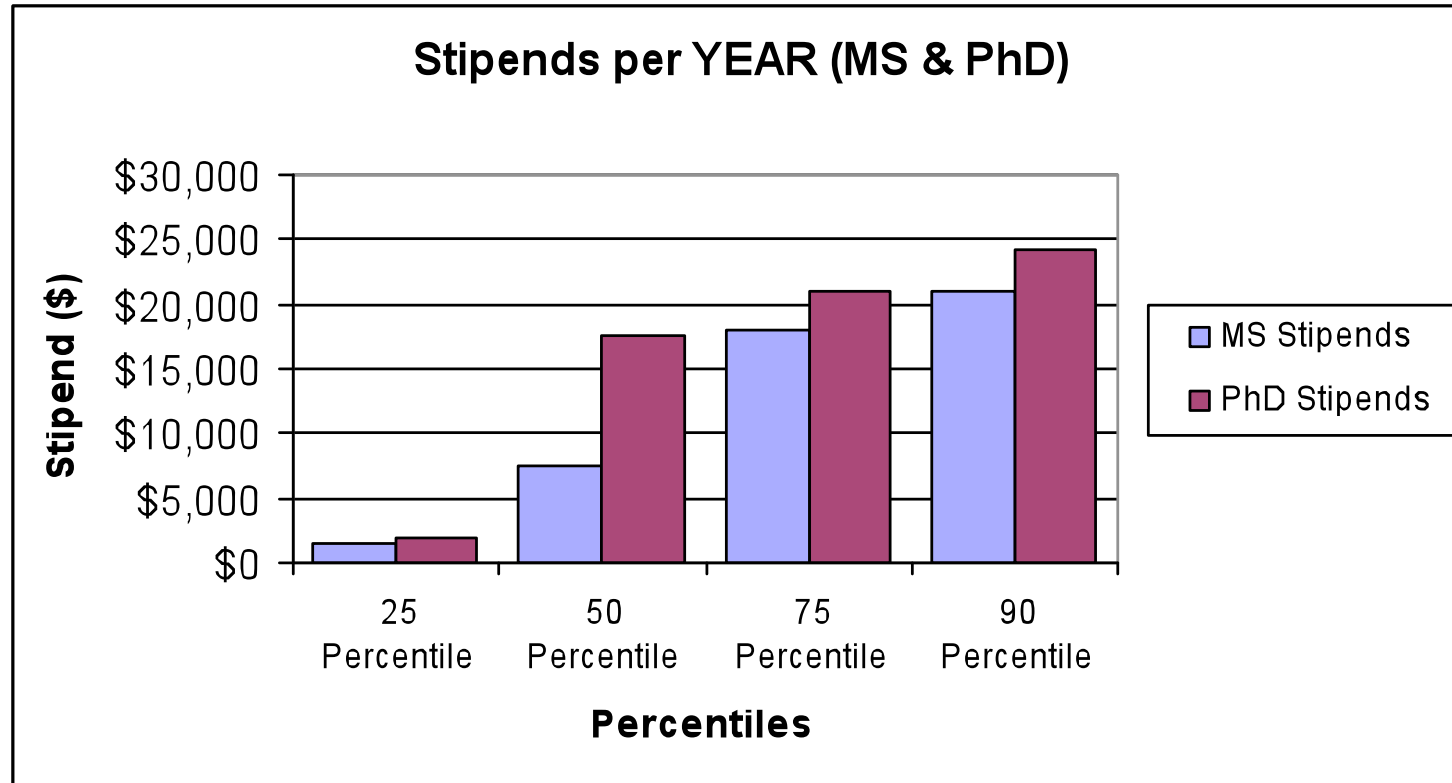
Average Eng. ACT Scores: 24.53



Fall 2007 Statistics

# Materials Science and Engineering Survey

Sponsored by the University Materials Council



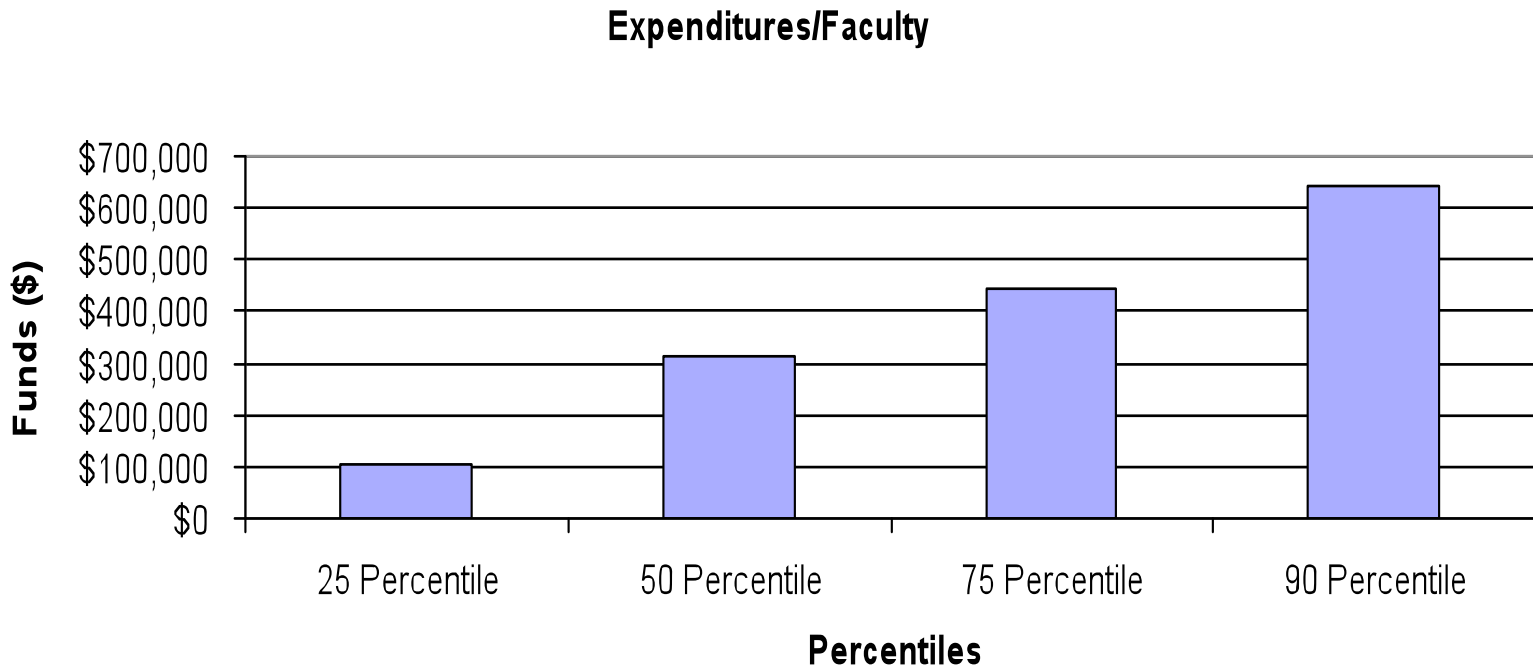
Average MS Stipend: \$9,765

Average PhD Stipend: \$13,820

Fall 2007 Statistics

# Materials Science and Engineering Survey

Sponsored by the University Materials Council

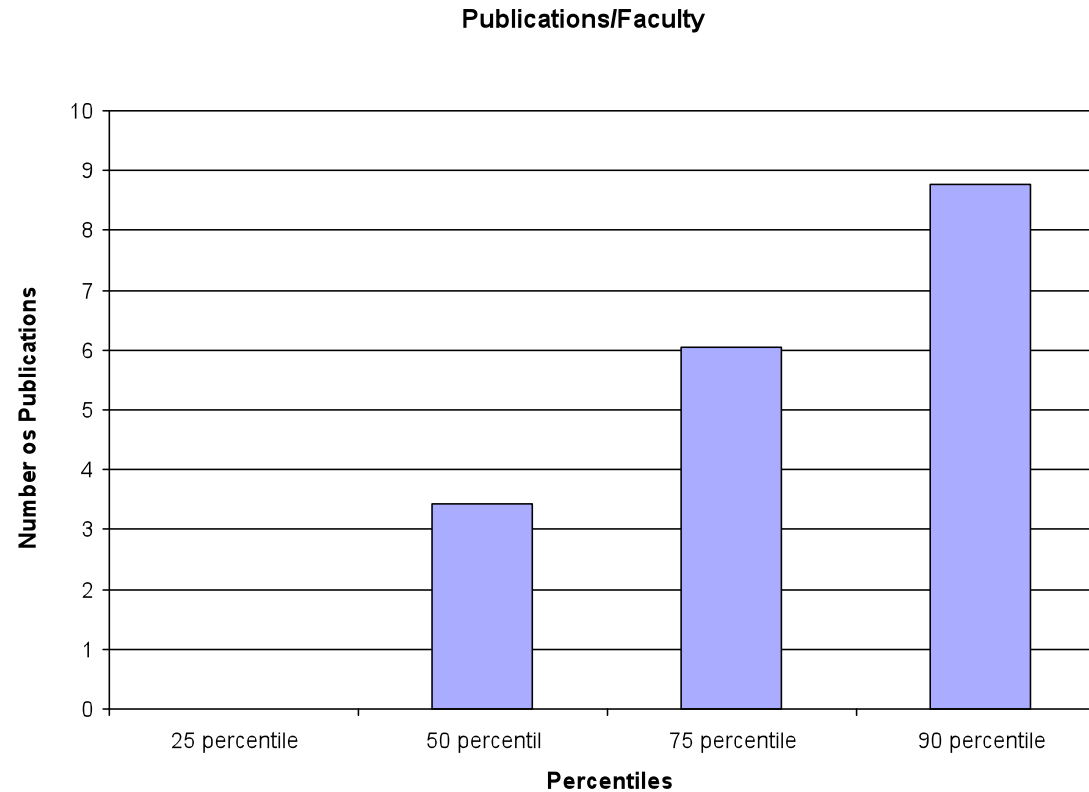


Average Funds/Faculty: \$309,112

Fall 2007 Statistics

# Materials Science and Engineering Survey

Sponsored by the University Materials Council

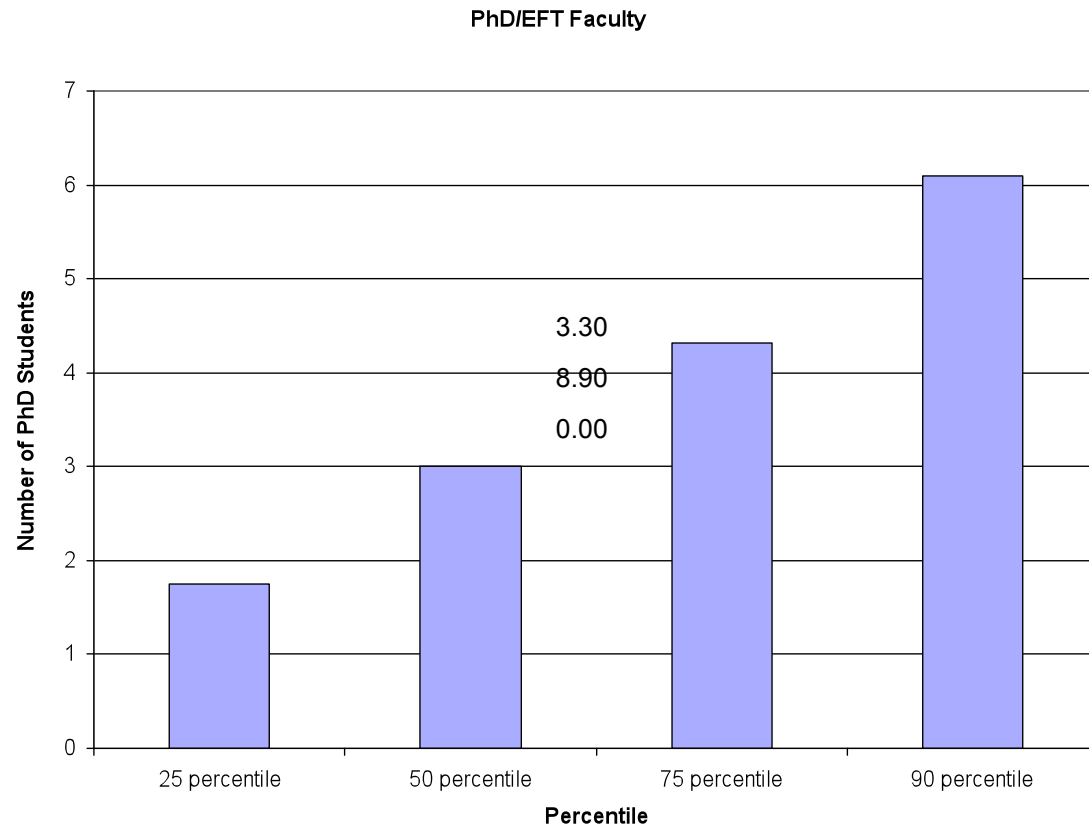


Average Publications/Faculty: 3.86

Fall 2007 Statistics

# Materials Science and Engineering Survey

Sponsored by the University Materials Council



Average PhD Students / EFT Faculty: 3.30

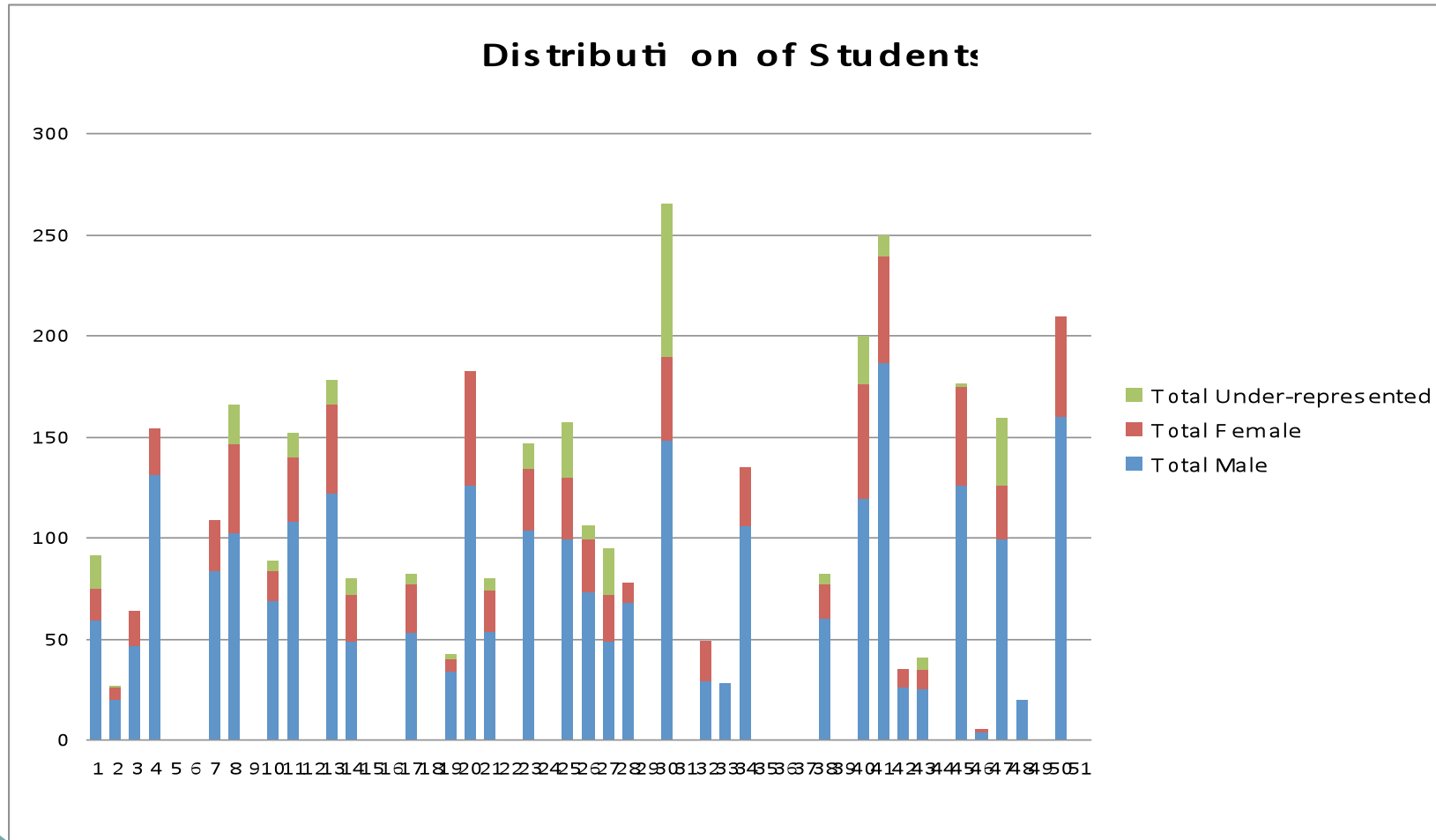
Maximum PhD Students / EFT Faculty: 8.90

Minimum PhD Students / EFT Faculty: 0.00

Fall 2007 Statistics

# Materials Science and Engineering Survey

Sponsored by the University Materials Council



Fall 2007 Statistics