

Materials Science and Engineering Survey

Sponsored by the University Materials Council

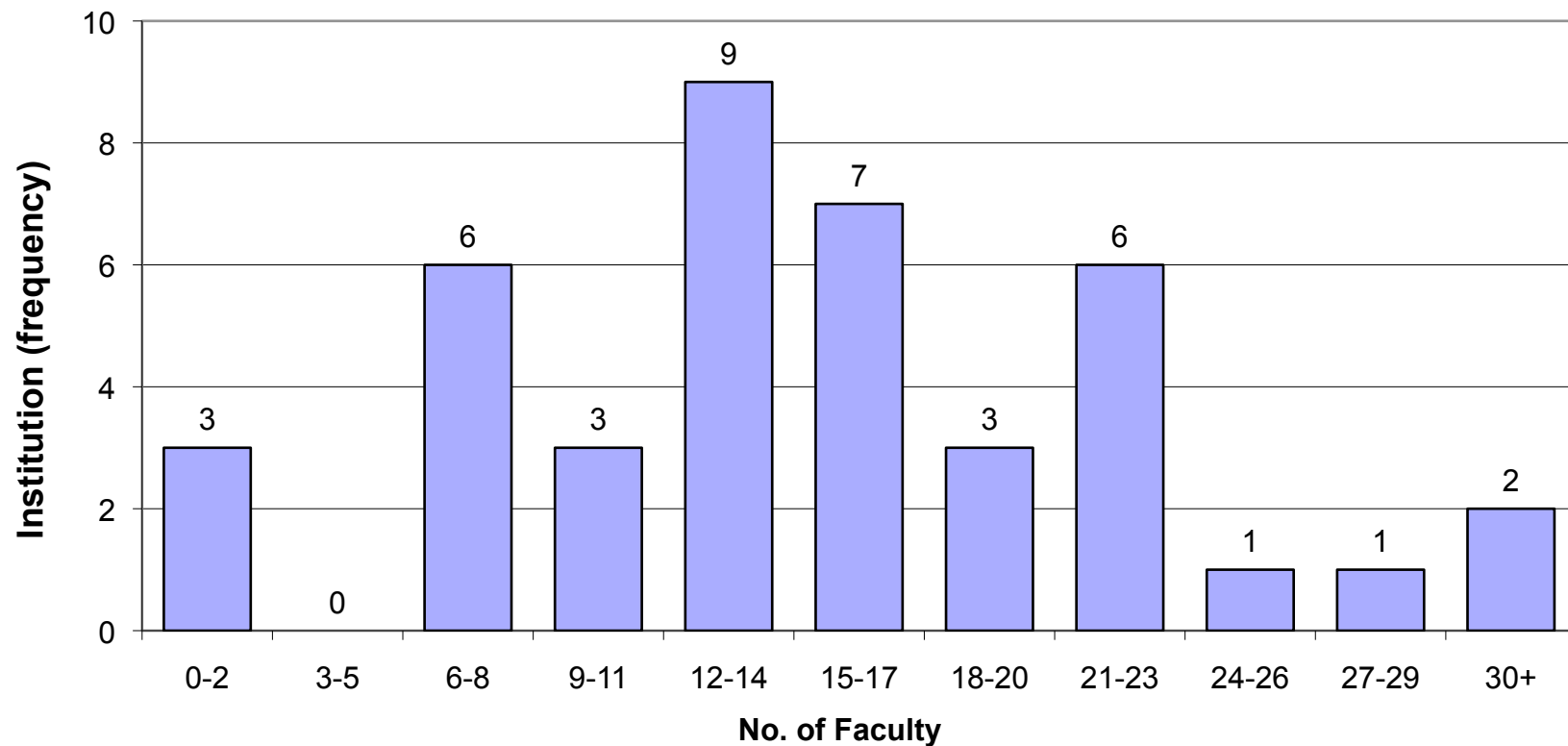
Alfred University
Arizona State University
Boise State University
Carnegie Mellon
CLEMSON UNIVERSITY
COLORADO SCHOOL OF MINES
Cornell University
Drexel University
Georgia Institute of Technology
IOWA STATE UNIVERISTY
Johns Hopkins University
Lehigh University
Michigan State University
Michigan Technological University
Missouri University of Science & Technology
North Carolina State University
Northwestern
Oregon State University
Purdue University
Rensselaer Polytechnic Institute
State University of New York at Binghamton

Stony Brook University
The Ohio State University
The Pennsylvania State University
The University of Alabama
The University of Tennessee
The University of Texas at Austin
The University of Texas at Dallas
University of Alabama at Birmingham
University of Florida
University of Illinois
University of Kentucky
University of Maryland
University of Michigan
University of Pennsylvania
University of Texas at Arlington
University of Virginia
University of Wisconsin-Madison
Virginia Polytechnic Institute & State University
Washington State University
Worcester Polytechnic Institute

Materials Science and Engineering Survey

Sponsored by the University Materials Council

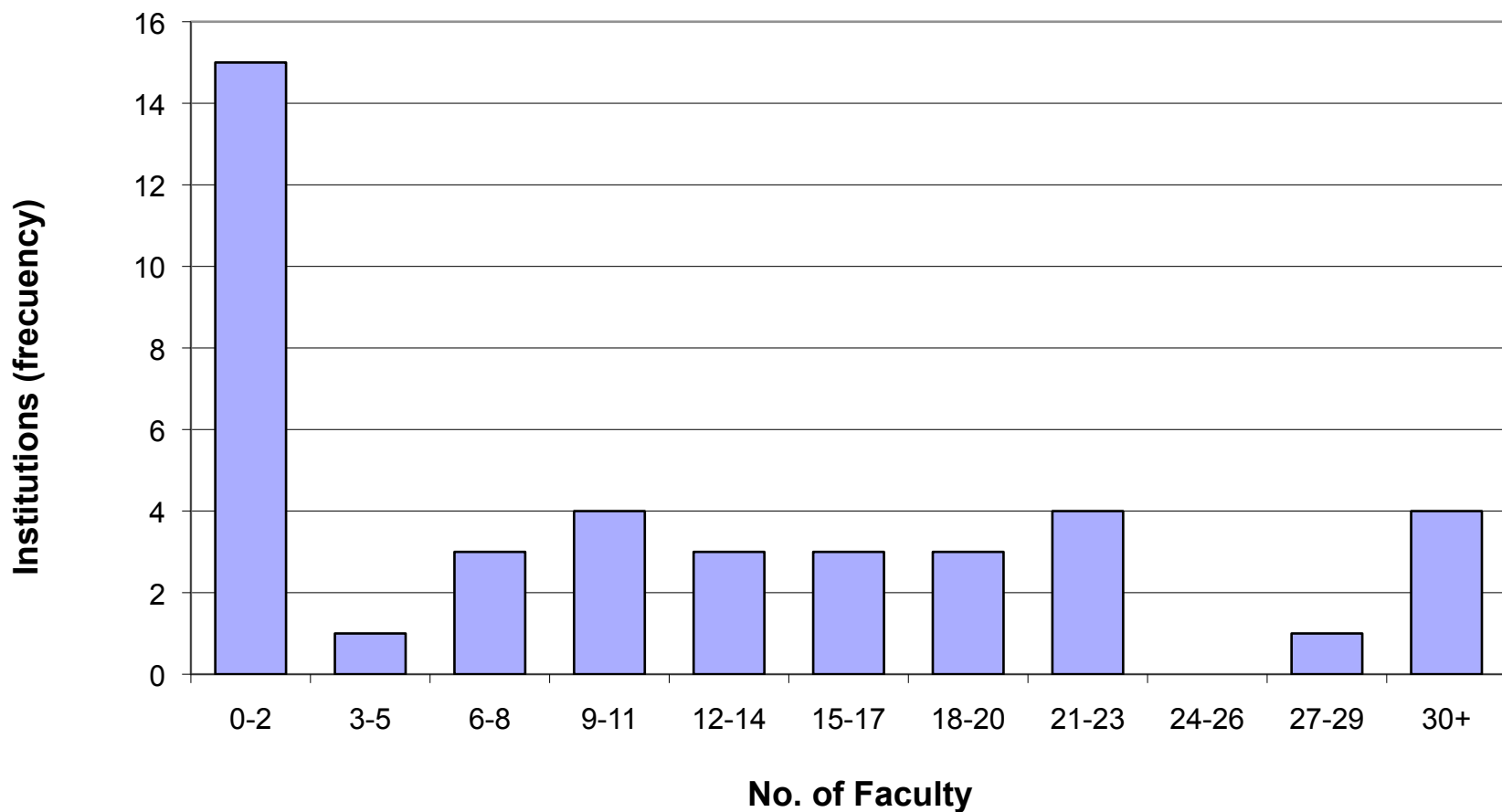
No. of Full Time Equivalent Faculty



Materials Science and Engineering Survey

Sponsored by the University Materials Council

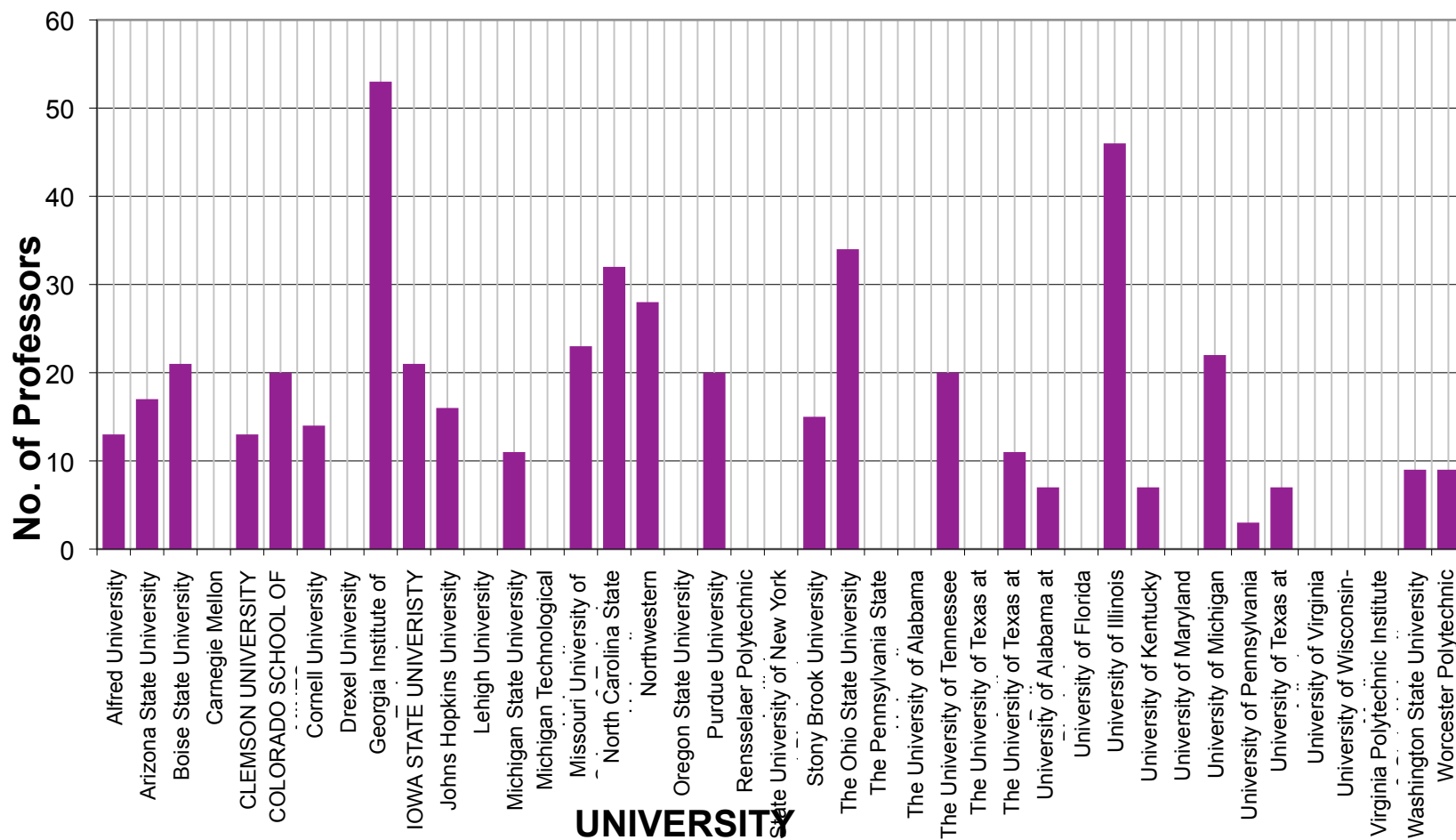
No. of MSE Thesis Sponsoring Faculty



Materials Science and Engineering Survey

Sponsored by the University Materials Council

No. of Thesis Sponsoring Faculty

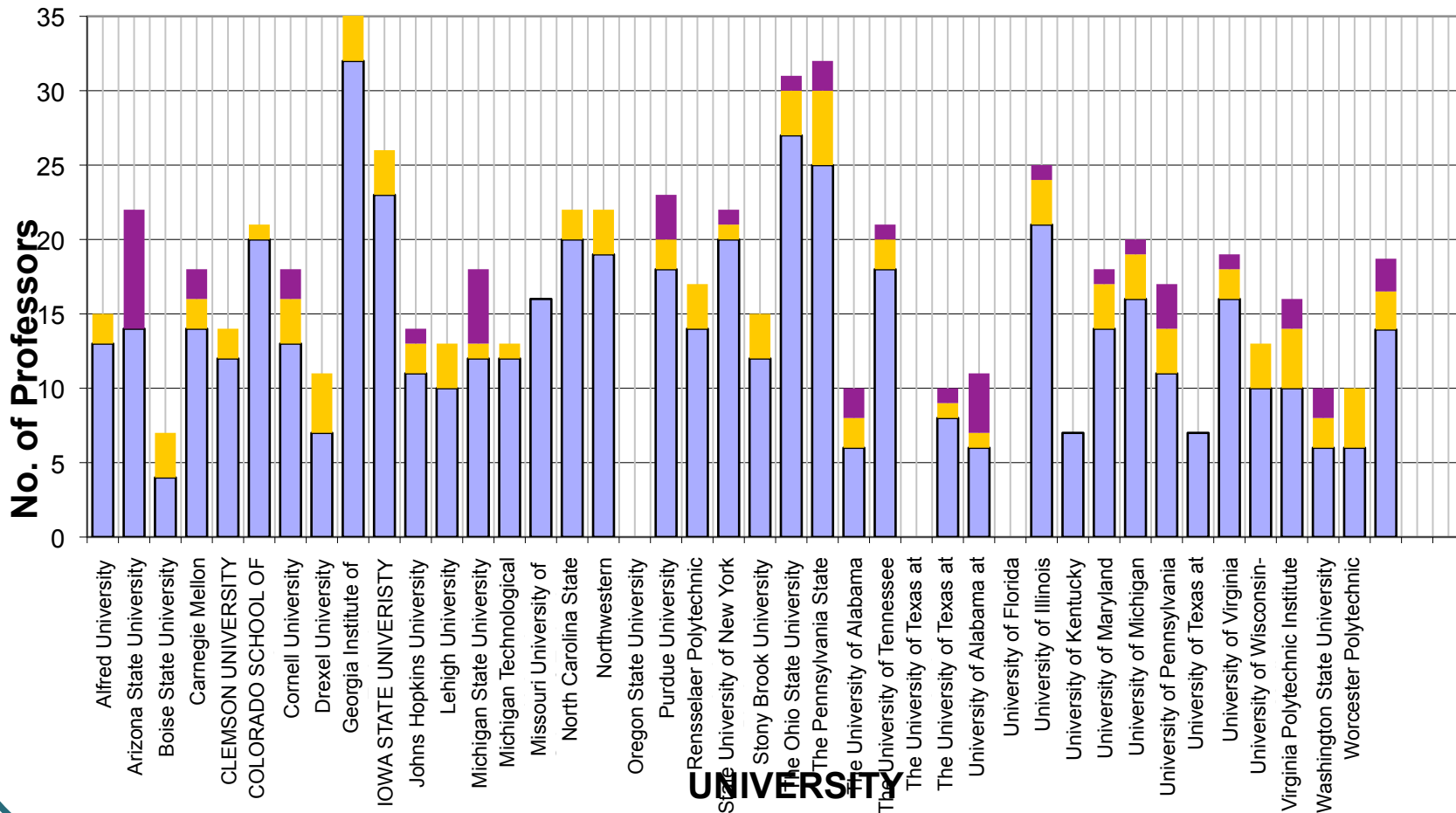


Materials Science and Engineering Survey

Sponsored by the University Materials Council

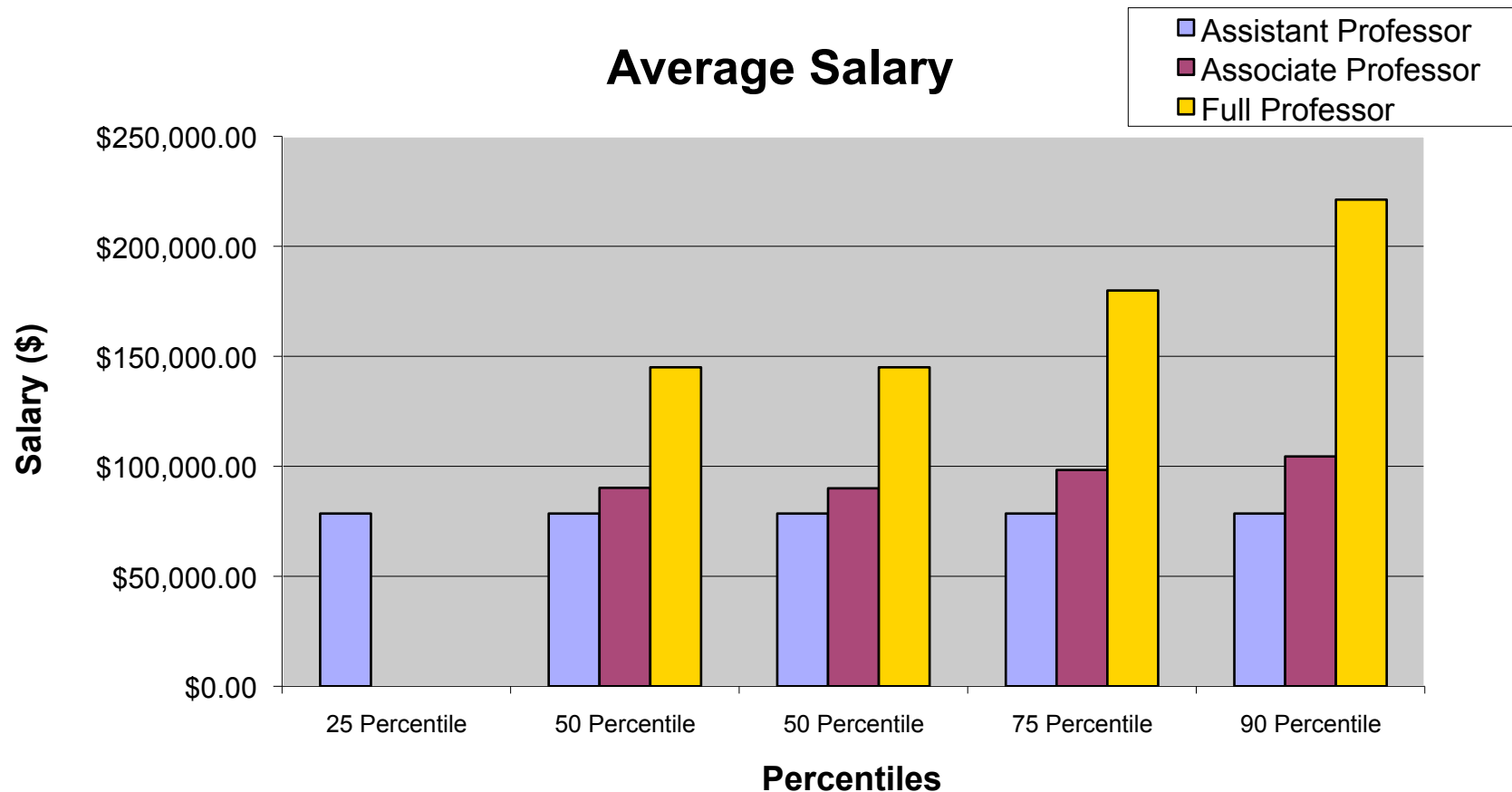
■ Under rep ■ Female ■ Male

No. of FTE Faculty



Materials Science and Engineering Survey

Sponsored by the University Materials Council



Average Full Professors Salary : **\$135,031.02**

Average Associates Professors Salary: **\$97,390.56**

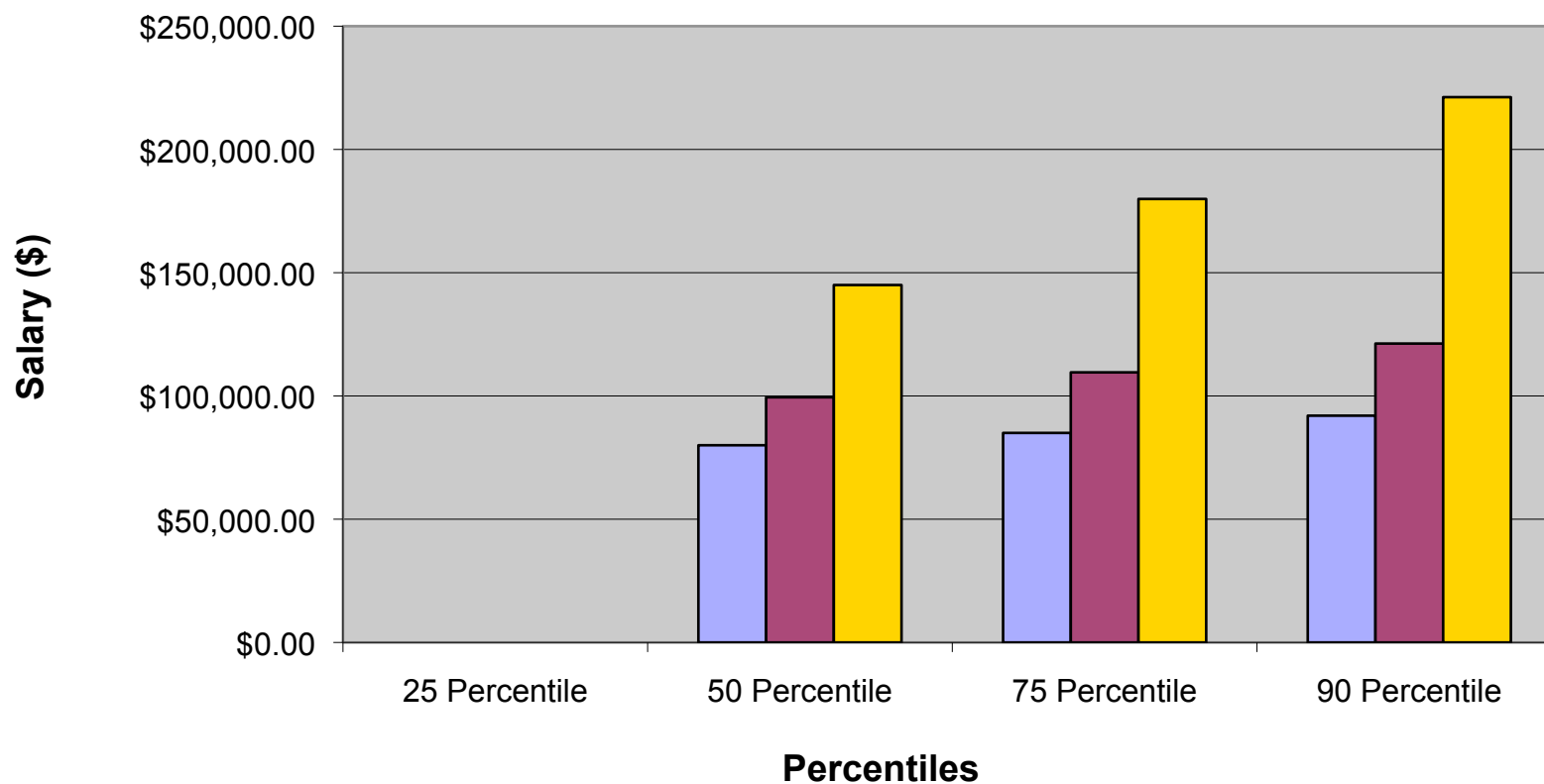
Average Assistant Professors Salary : **\$81,408.24**

Materials Science and Engineering Survey

Sponsored by the University Materials Council

Upper Decile of Each Percentile Group

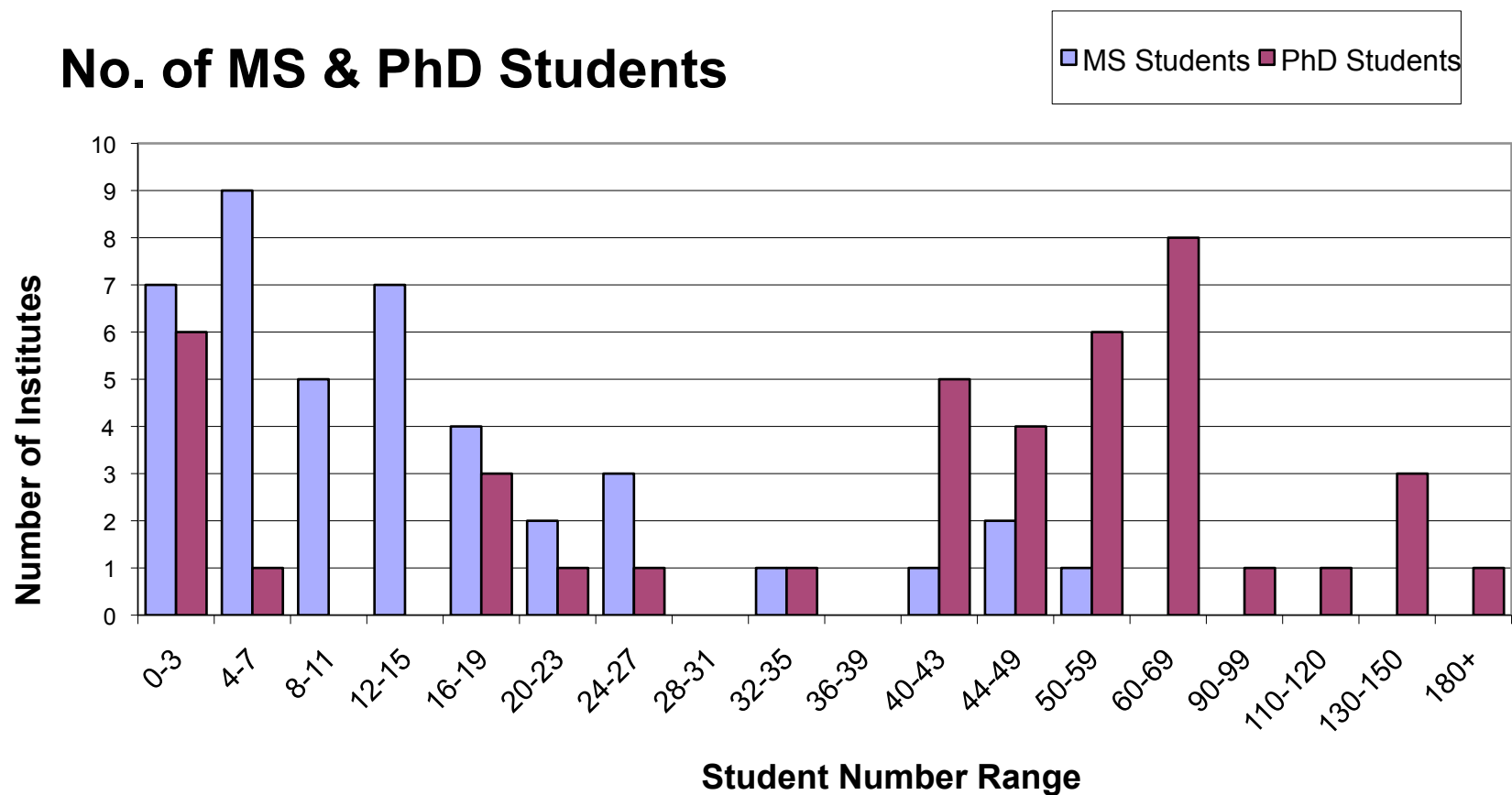
- Assistant Professor
- Associate Professor
- Full Professor



Materials Science and Engineering Survey

Sponsored by the University Materials Council

No. of MS & PhD Students

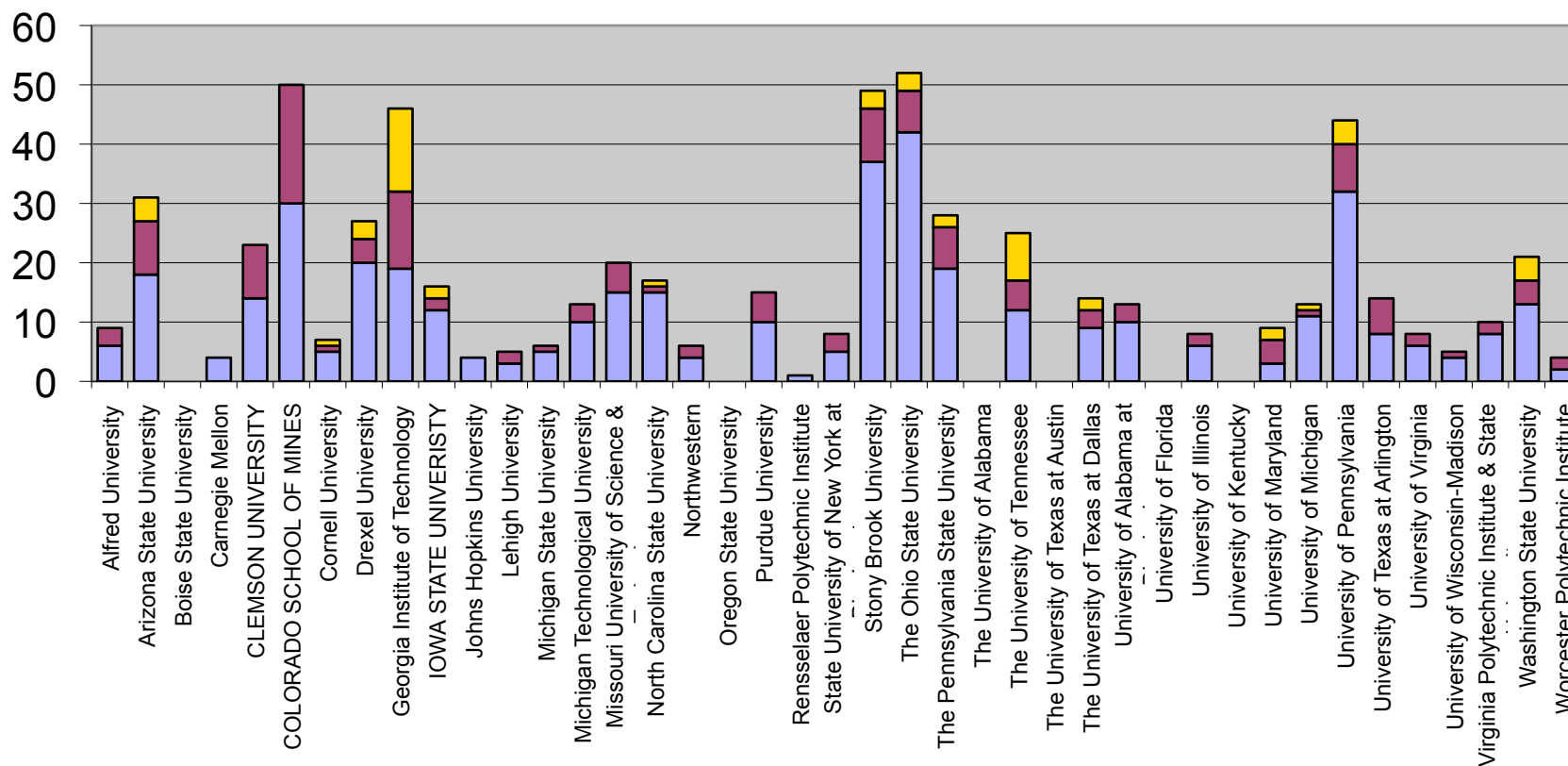


Materials Science and Engineering Survey

Sponsored by the University Materials Council

Total MS Students

■ MS Under-represented
■ MS Female
■ MS Male

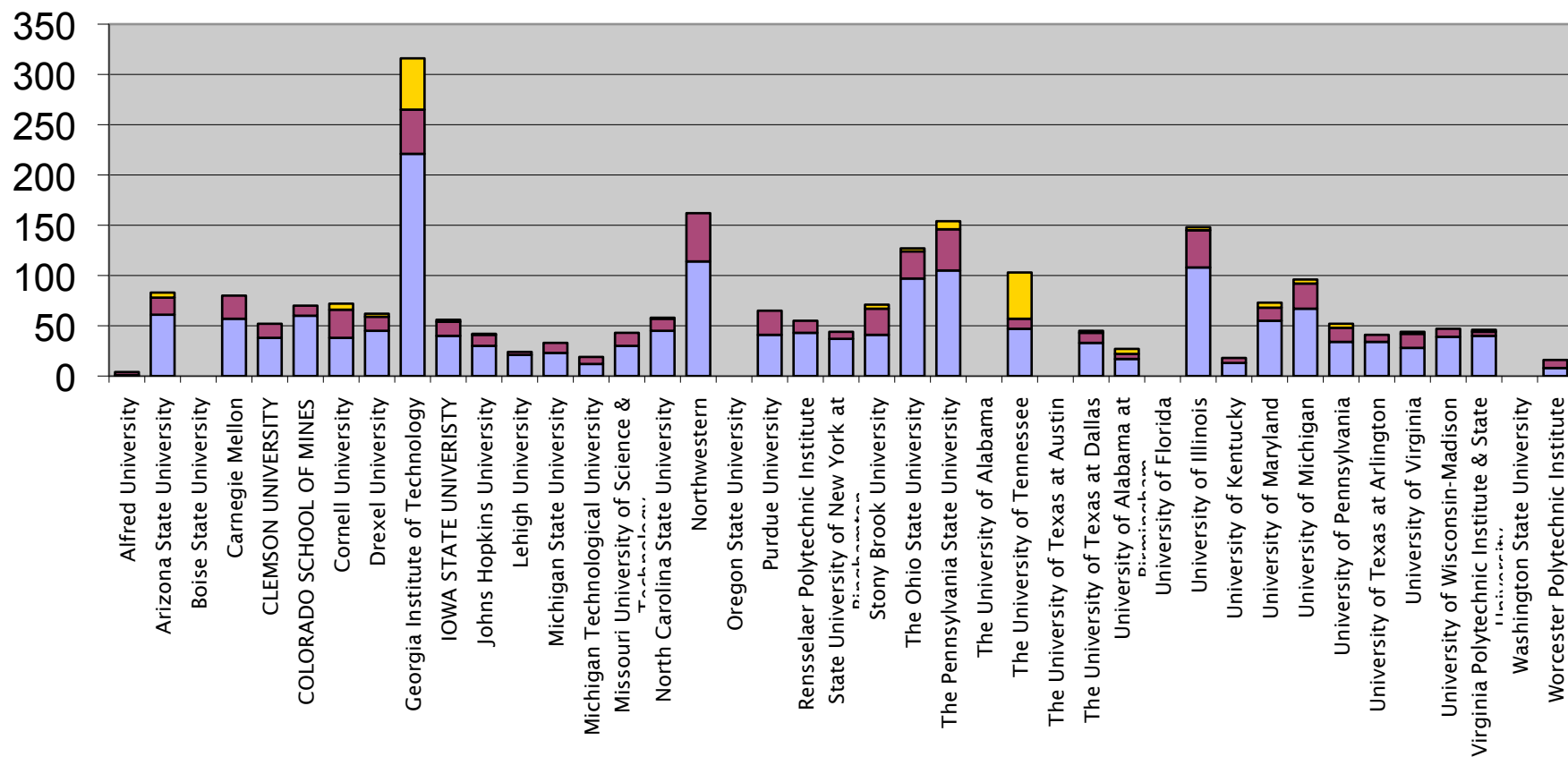


Materials Science and Engineering Survey

Sponsored by the University Materials Council

Total PhD Students

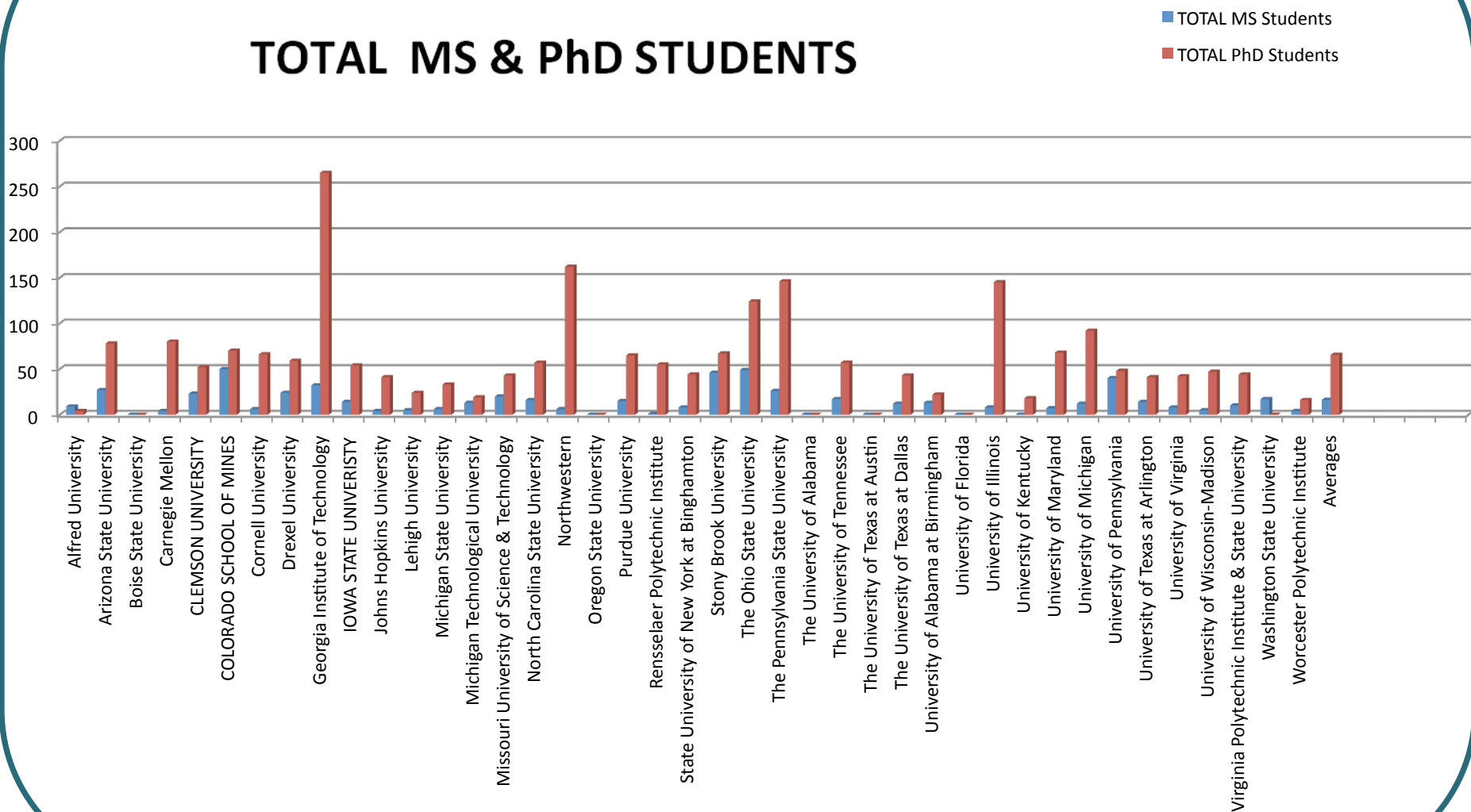
■ PhD Under-represented ■ PhD Female ■ PhD Male



Materials Science and Engineering Survey

Sponsored by the University Materials Council

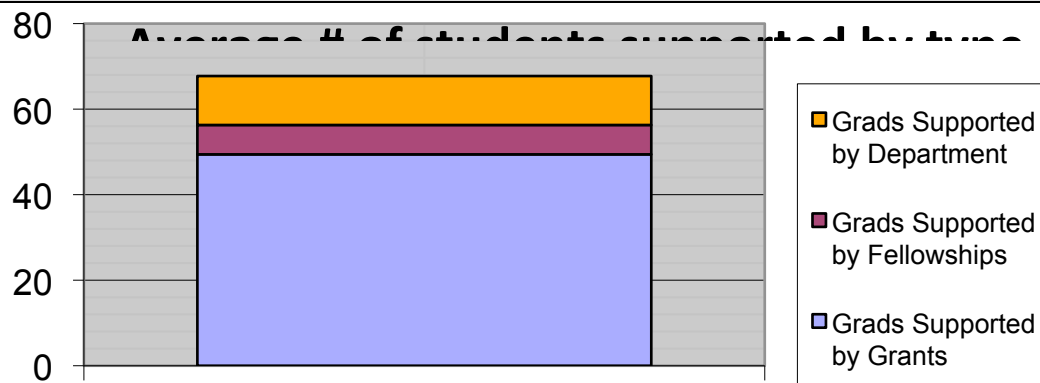
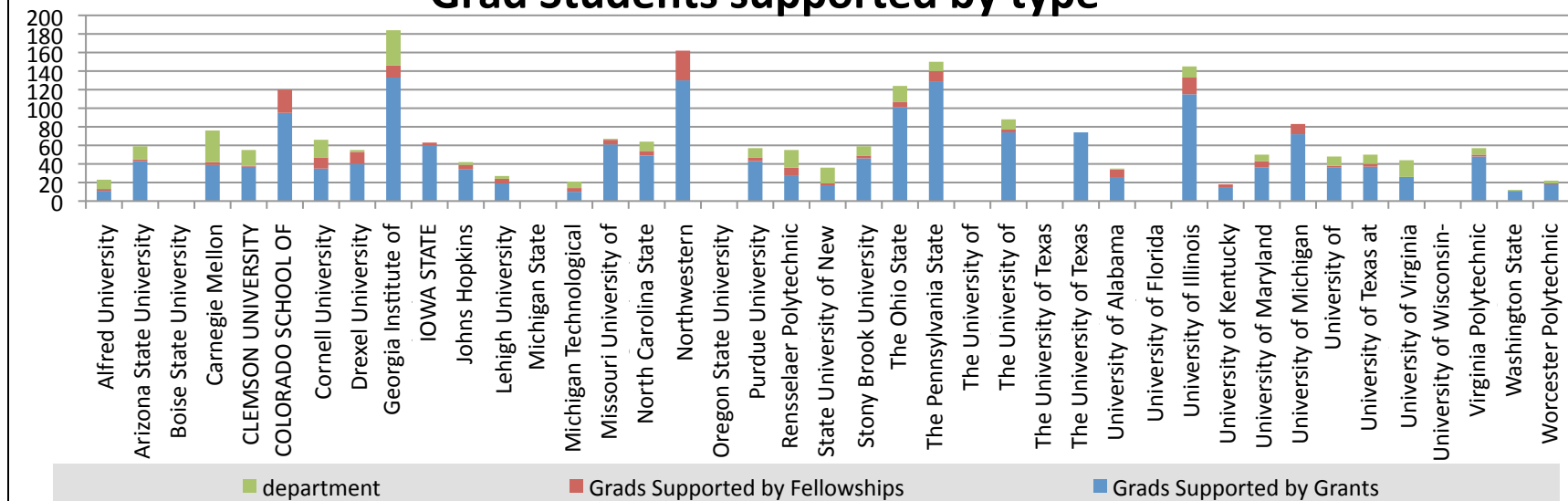
TOTAL MS & PhD STUDENTS



Materials Science and Engineering Survey

Sponsored by the University Materials Council

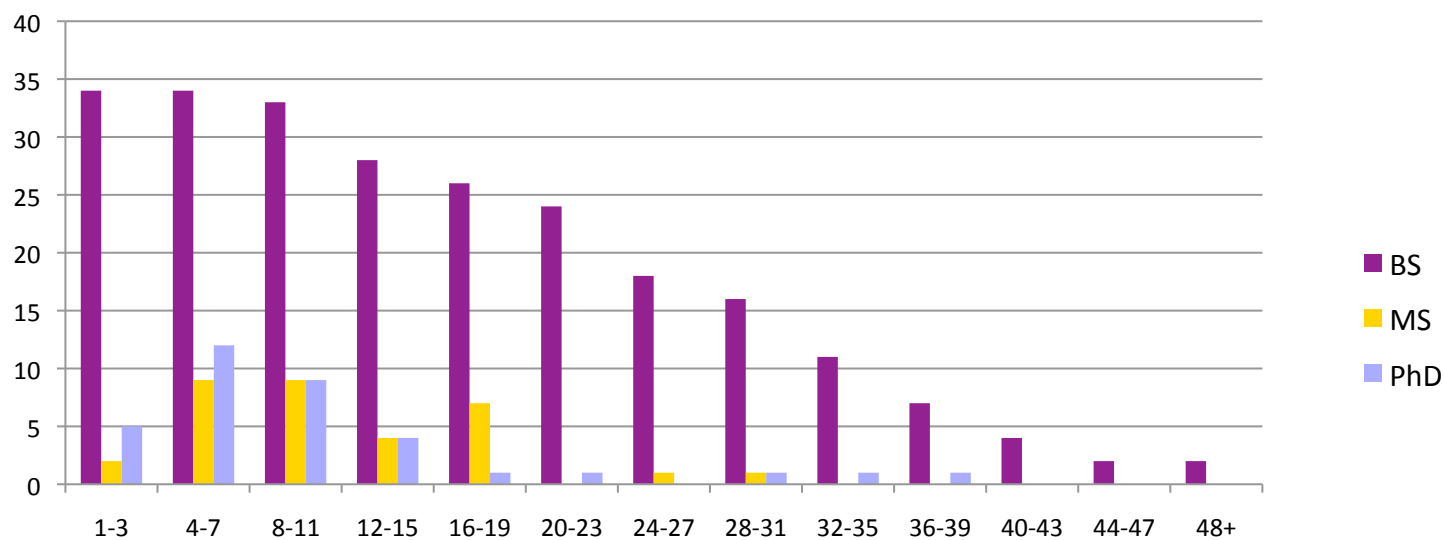
Grad Students supported by type



Materials Science and Engineering Survey

Sponsored by the University Materials Council

Degrees Awarded



Materials Science and Engineering Survey

Sponsored by the University Materials Council

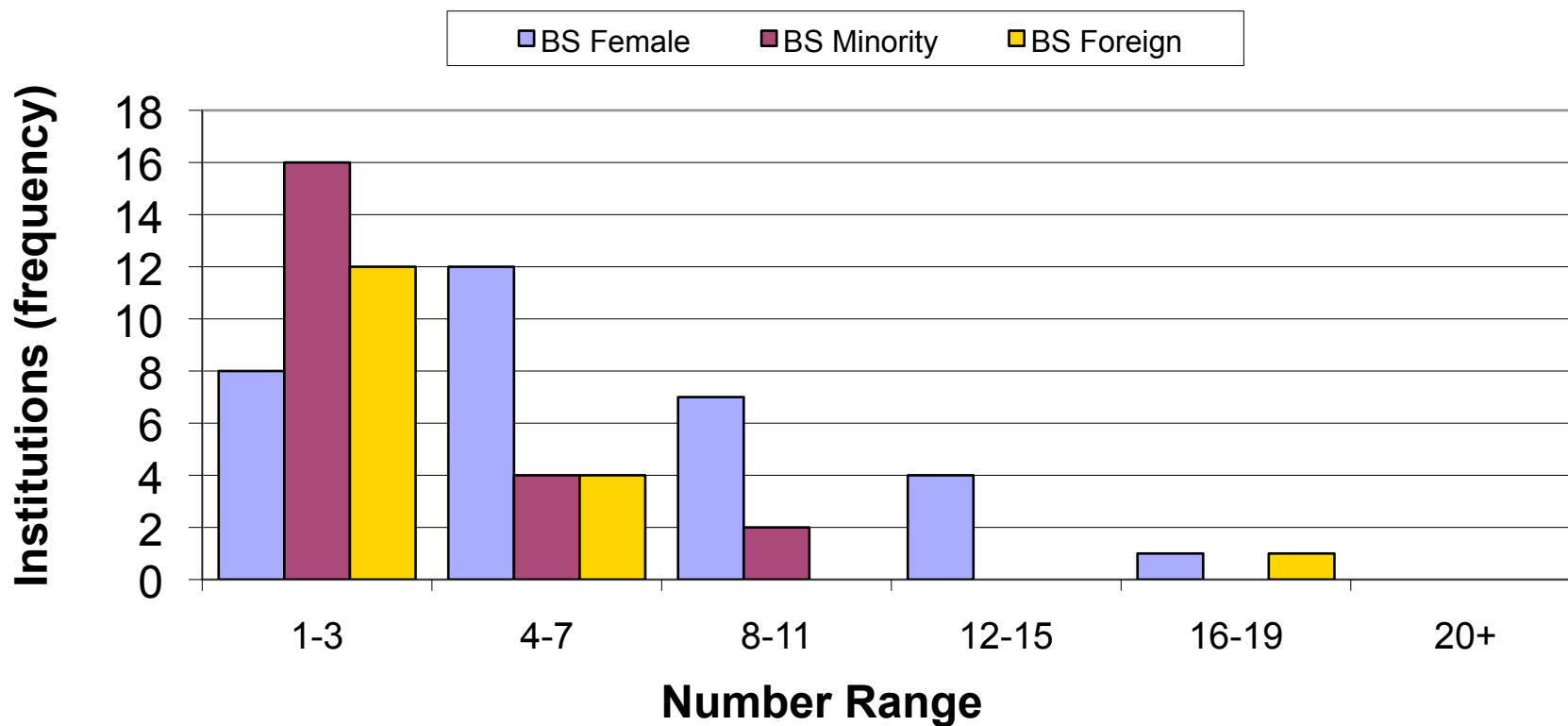
Additional Data

- Average New Assistant Professor salary: **\$84,062**
- Average number of Postdocs: 10
- Average Postdoc salary: **\$ 40,081.83**
- Upper decile Postdoc salary: **\$ 57,967.46**
- Almost all schools permit 3/9 summer salary
- Average teaching assignment: **9 Hours**

Materials Science and Engineering Survey

Sponsored by the University Materials Council

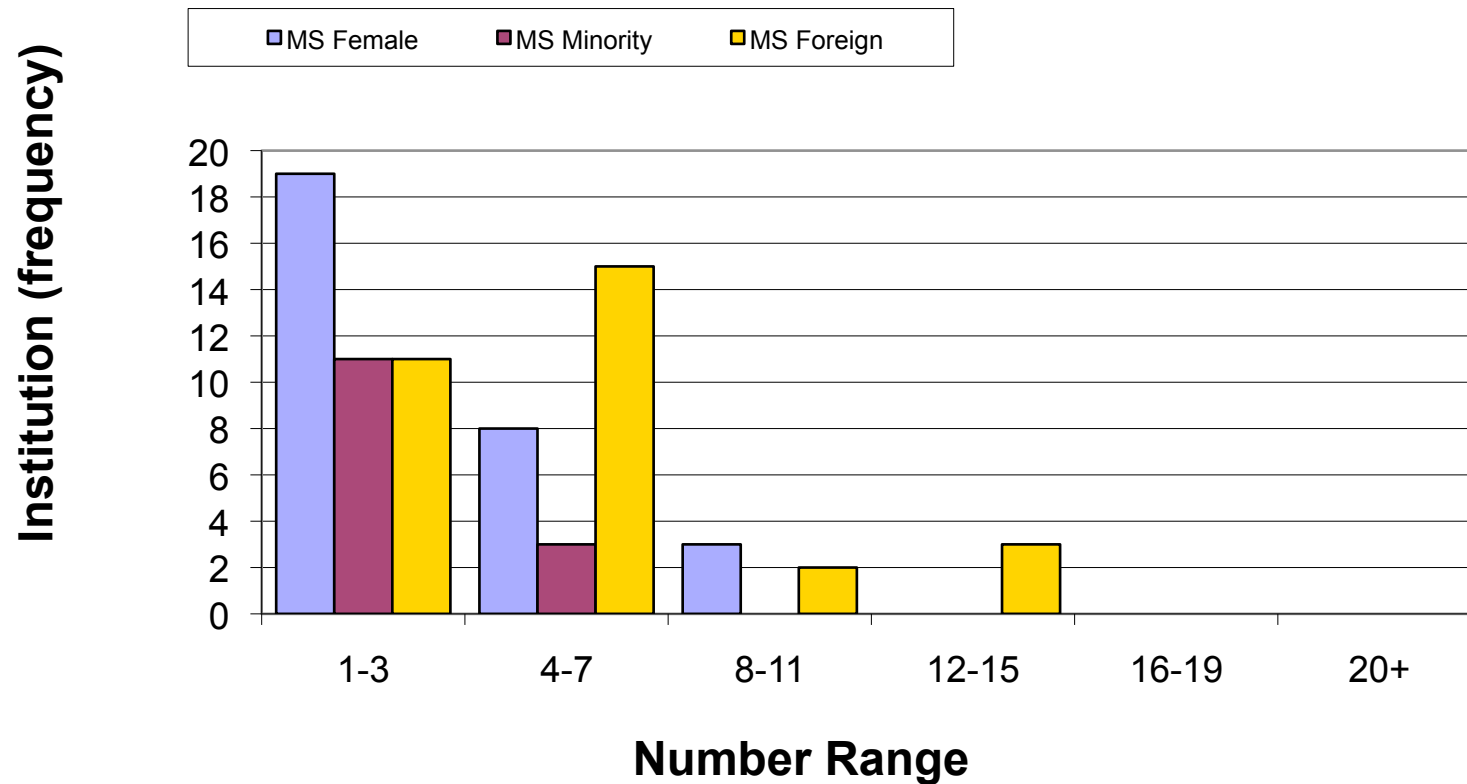
BS Degrees Awarded (Female, Minorities & Foreign)



Materials Science and Engineering Survey

Sponsored by the University Materials Council

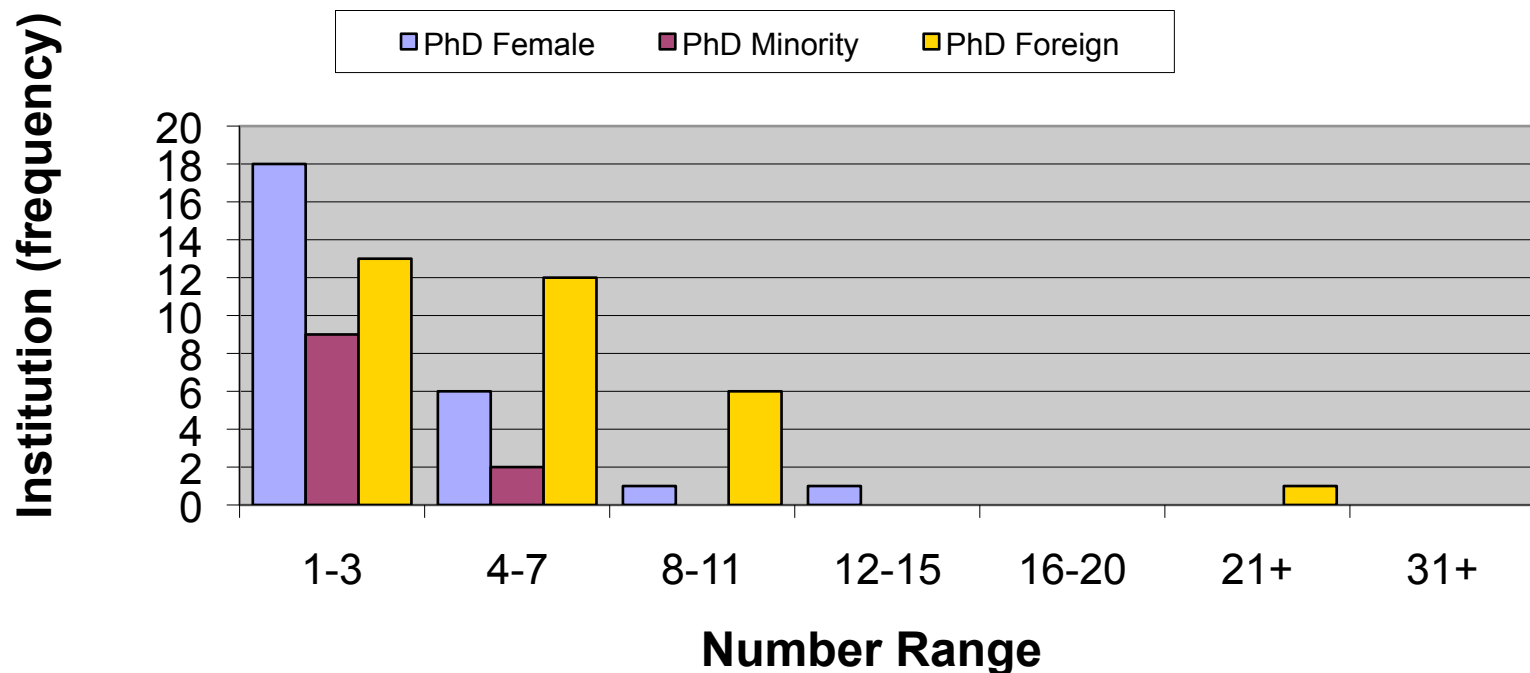
MS Degrees Awarded (Female, Minorities & Foreign)



Materials Science and Engineering Survey

Sponsored by the University Materials Council

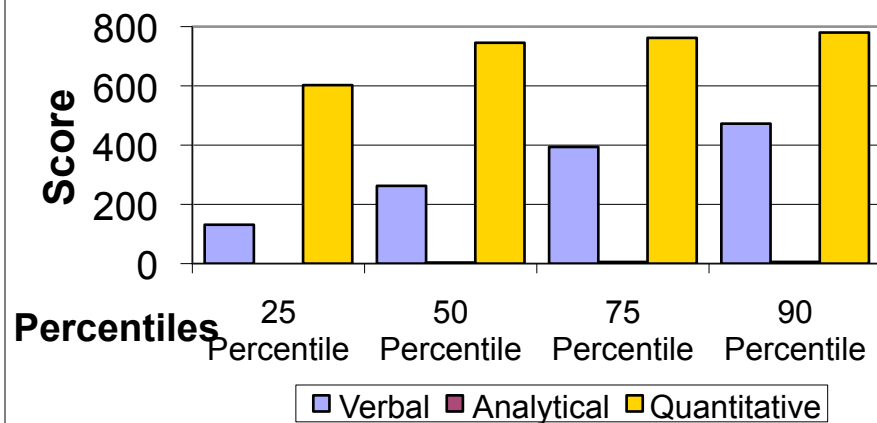
PhD Degrees Awarded (Females, Minorities, Foreign)



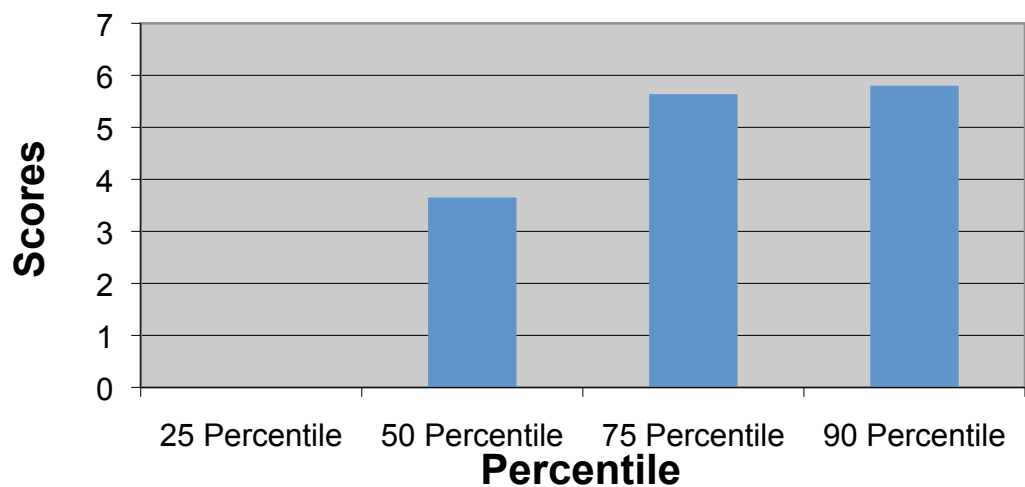
Materials Science and Engineering Survey

Sponsored by the University Materials Council

GRE Scores



GRE Analytical Scores



Average Verbal scores: 525

Average Analytical scores: 5

Average Quantitative scores: 697

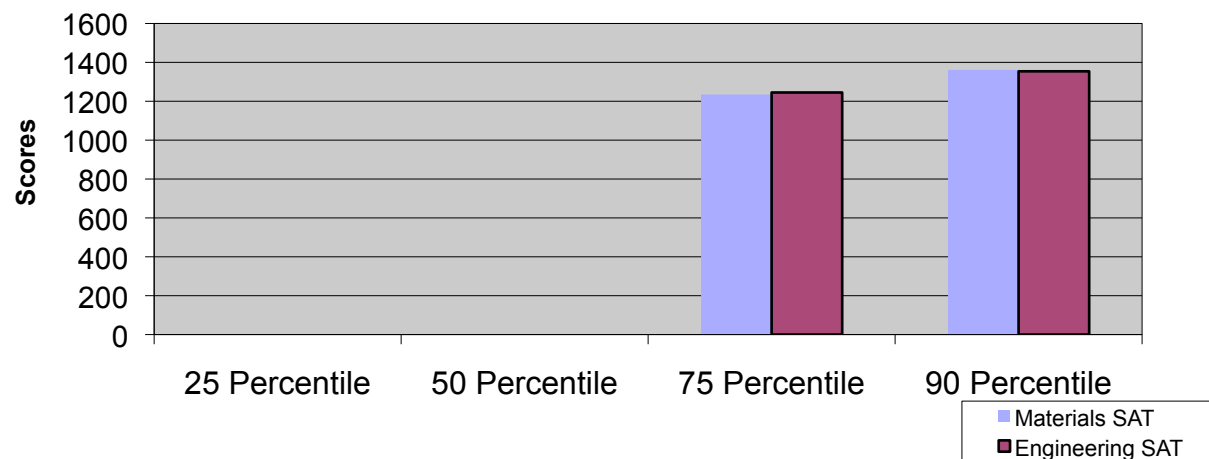
Materials Science and Engineering Survey

Sponsored by the University Materials Council

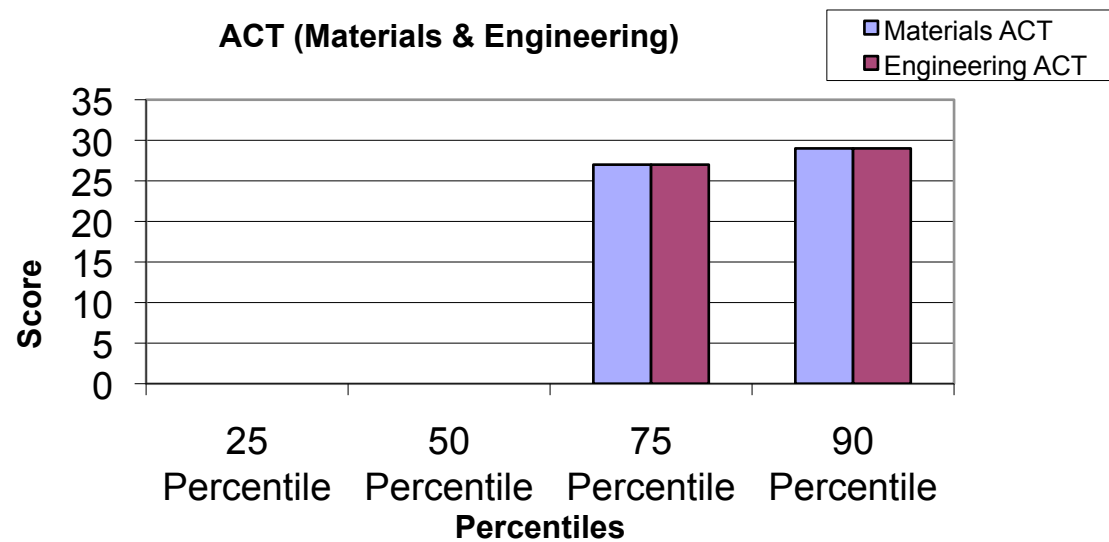
Average MSE SAT Scores: 1300

Average Eng. SAT Scores: 1271

SAT Scores (Materials & Engineering)



ACT (Materials & Engineering)



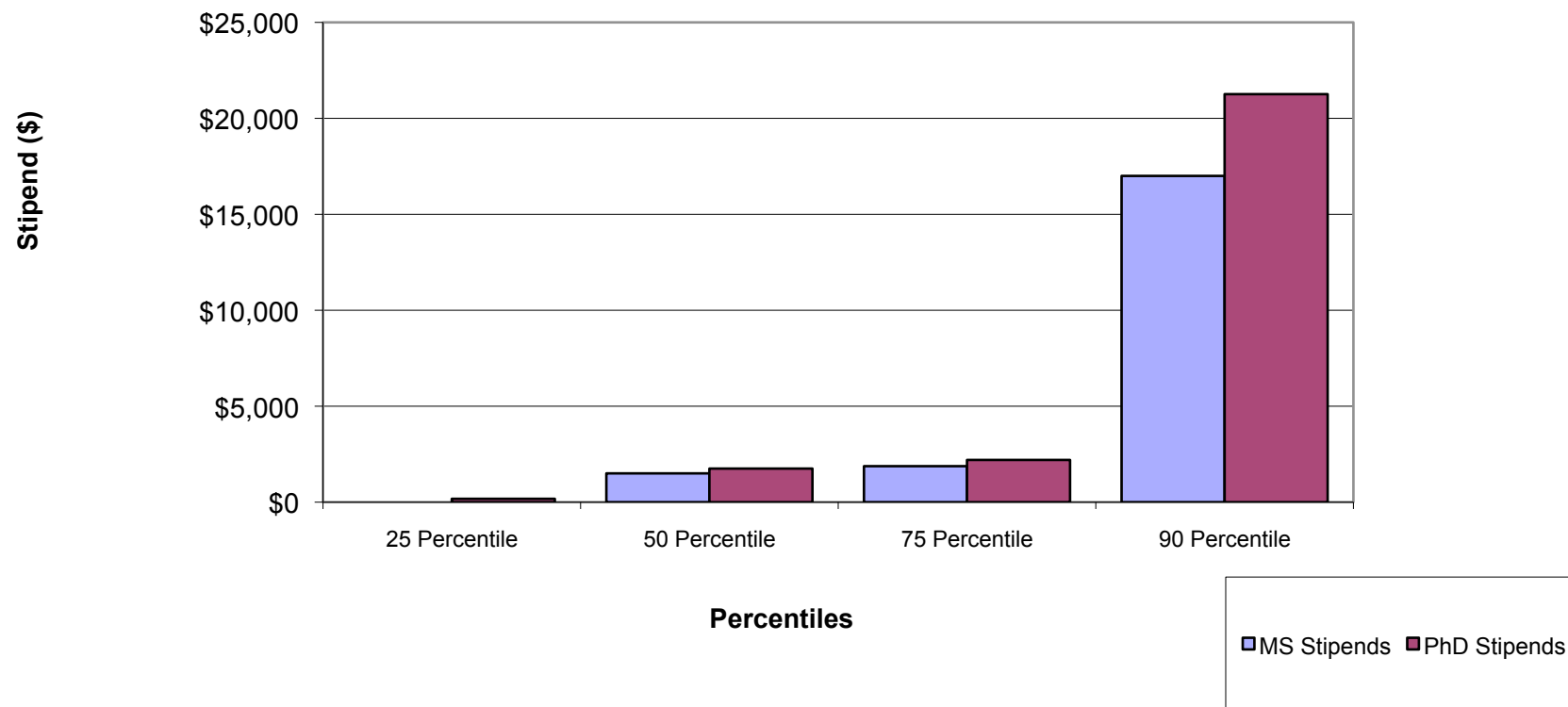
Average MSE ACT Scores: 28

Average Eng. ACT Scores: 27

Materials Science and Engineering Survey

Sponsored by the University Materials Council

Stipends per Month (MS & PhD)



Average MS Stipend

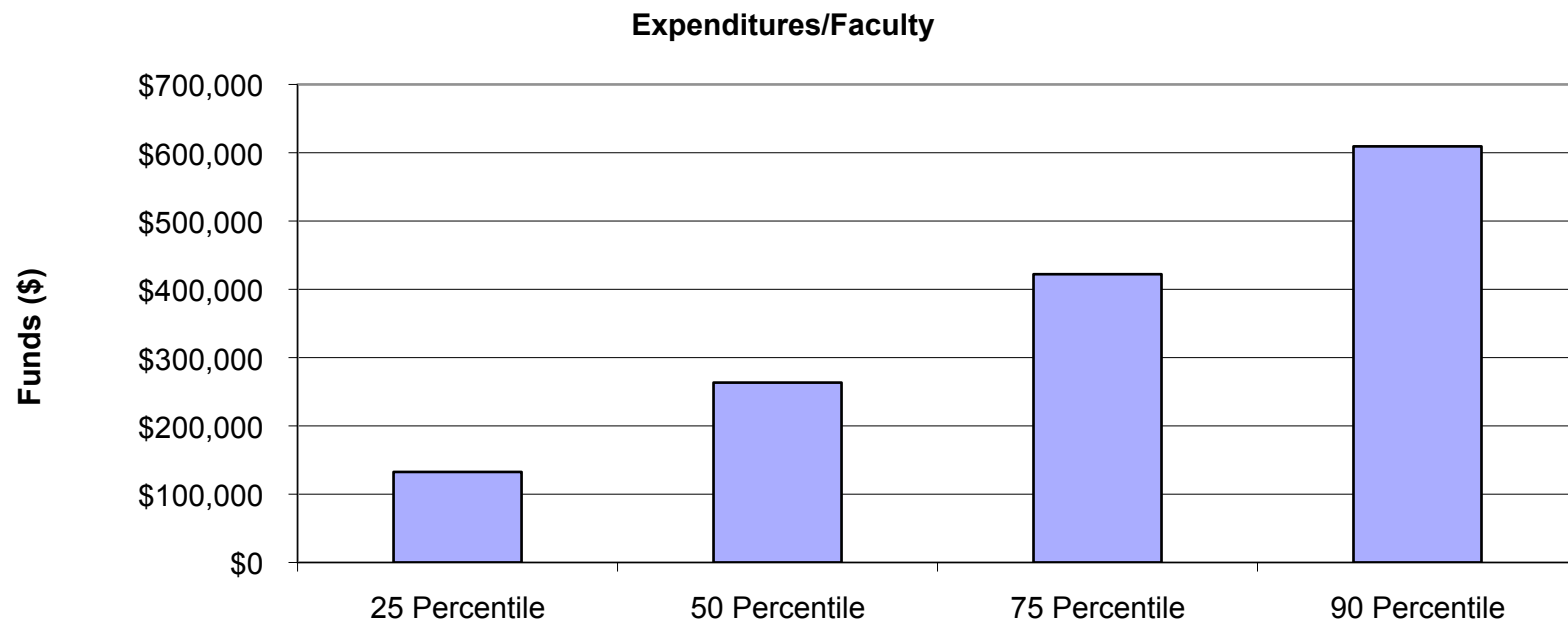
1,983.77

Average PhD Stipend

2,054.73

Materials Science and Engineering Survey

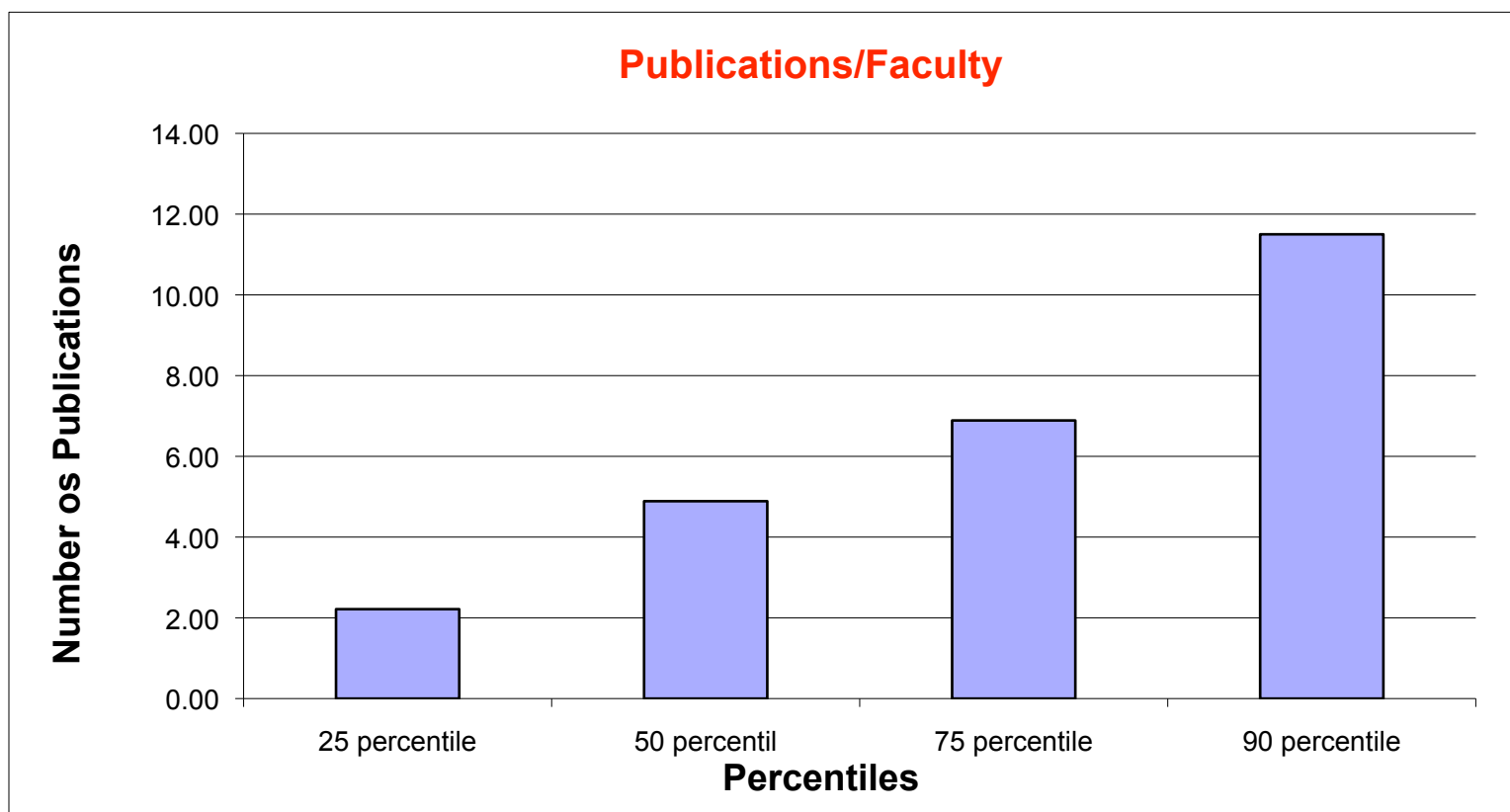
Sponsored by the University Materials Council



Average Funds/Faculty: \$312,383

Materials Science and Engineering Survey

Sponsored by the University Materials Council

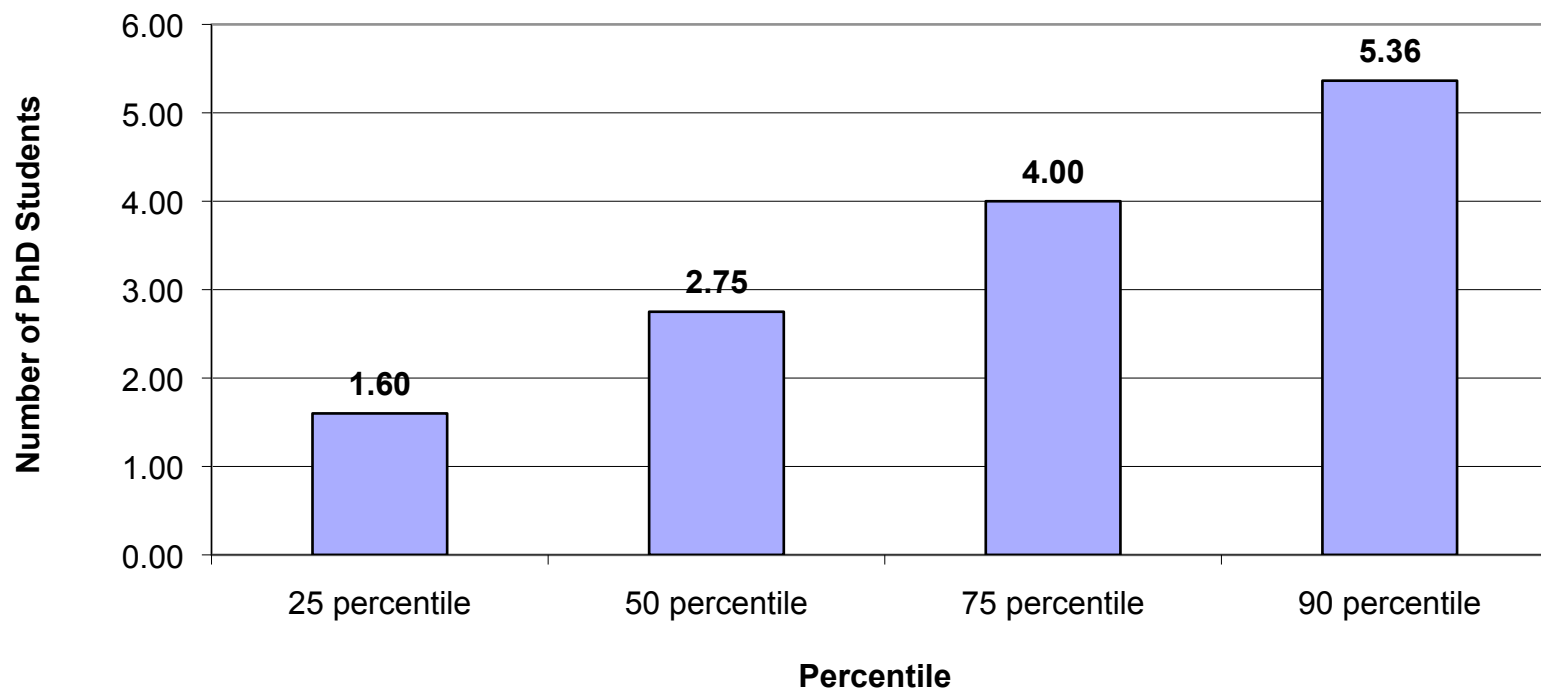


Average Publications/Faculty: 8.24

Materials Science and Engineering Survey

Sponsored by the University Materials Council

PhD/EFT Faculty

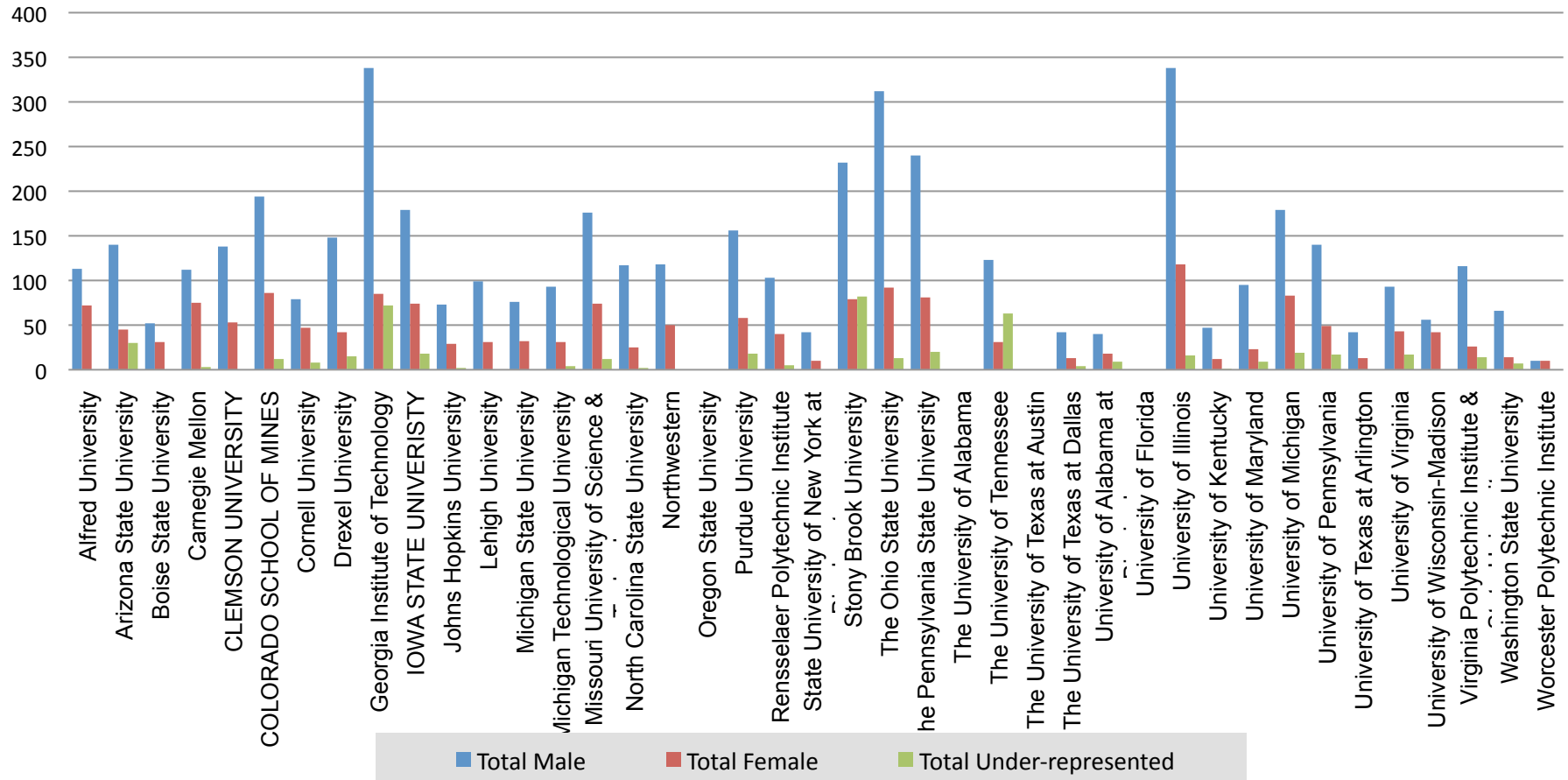


Average	3.40
Max	7.16
Min	0.19

Materials Science and Engineering Survey

Sponsored by the University Materials Council

Distribution of Students



Materials Science and Engineering Survey

Sponsored by the University Materials Council

Total PhD Students

■ PhD Male
 ■ PhD Female
 ■ PhD Under-represented

