

Materials Science and Engineering Survey

Sponsored by the University Materials Council

BOISE STATE UNIVERSITY

CARNEGIE MELLON UNIVERSITY

CASE WESTERN RESERVE UNIVERSITY

CLEMSON UNIVERSITY

COLORADO SCHOOL OF MINES

CORNELL UNIVERSITY

DREXEL UNIVERSITY

GEORGIA INSTITUTE OF TECHNOLOGY

IOWA STATE UNIVERSITY

JOHNS HOPKINS UNIVERSITY

LEHIGH UNIVERSITY

MASSACHUSETTS INSTITUTE OF TECHNOLOGY

MCGILL UNIVERSITY

MICHIGAN STATE UNIVERSITY

MICHIGAN TECHNOLOGICAL UNIVERSITY

MISSOURI UNIVERSITY OF SCIENCE AND TECHNOLOGY

NEW YORK STATE COLLEGE OF CERAMICS @ ALFRED
UNIVERSITY

NORTH CAROLINA STATE UNIVERSITY

NORTHWESTERN UNIVERSITY

OREGON STATE UNIVERSITY

PURDUE UNIVERSITY

RENSSELAER POLYTECHNIC INSTITUTE

RUTGERS THE STATE UNIVERSITY OF NEW JERSEY

STATE UNIVERSITY OF NEW YORK AT BINGHAMTON

STONY BROOK UNIVERSITY

THE OHIO STATE UNIVERSITY

THE PENNSYLVANIA STATE UNIVERSITY

THE UNIVERSITY OF ALABAMA

THE UNIVERSITY OF TENNESSEE

THE UNIVERSITY OF TEXAS AT AUSTIN

THE UNIVERSITY OF TEXAS AT DALLAS

UNIVERSITY OF ALABAMA AT BIRMINGHAM

UNIVERSITY OF CALIFORNIA, LOS ANGELES

UNIVERSITY OF CONNECTICUT

UNIVERSITY OF FLORIDA

UNIVERSITY OF ILLINOIS

UNIVERSITY OF KENTUCKY

UNIVERSITY OF MARYLAND

UNIVERSITY OF MICHIGAN

UNIVERSITY OF PENNSYLVANIA

UNIVERSITY OF PITTSBURGH

UNIVERSITY OF VIRGINIA

UNIVERSITY OF WISCONSIN-MADISON

VIRGINIA POLYTECHNIC INSTITUTE AND STATE UNIVERSITY

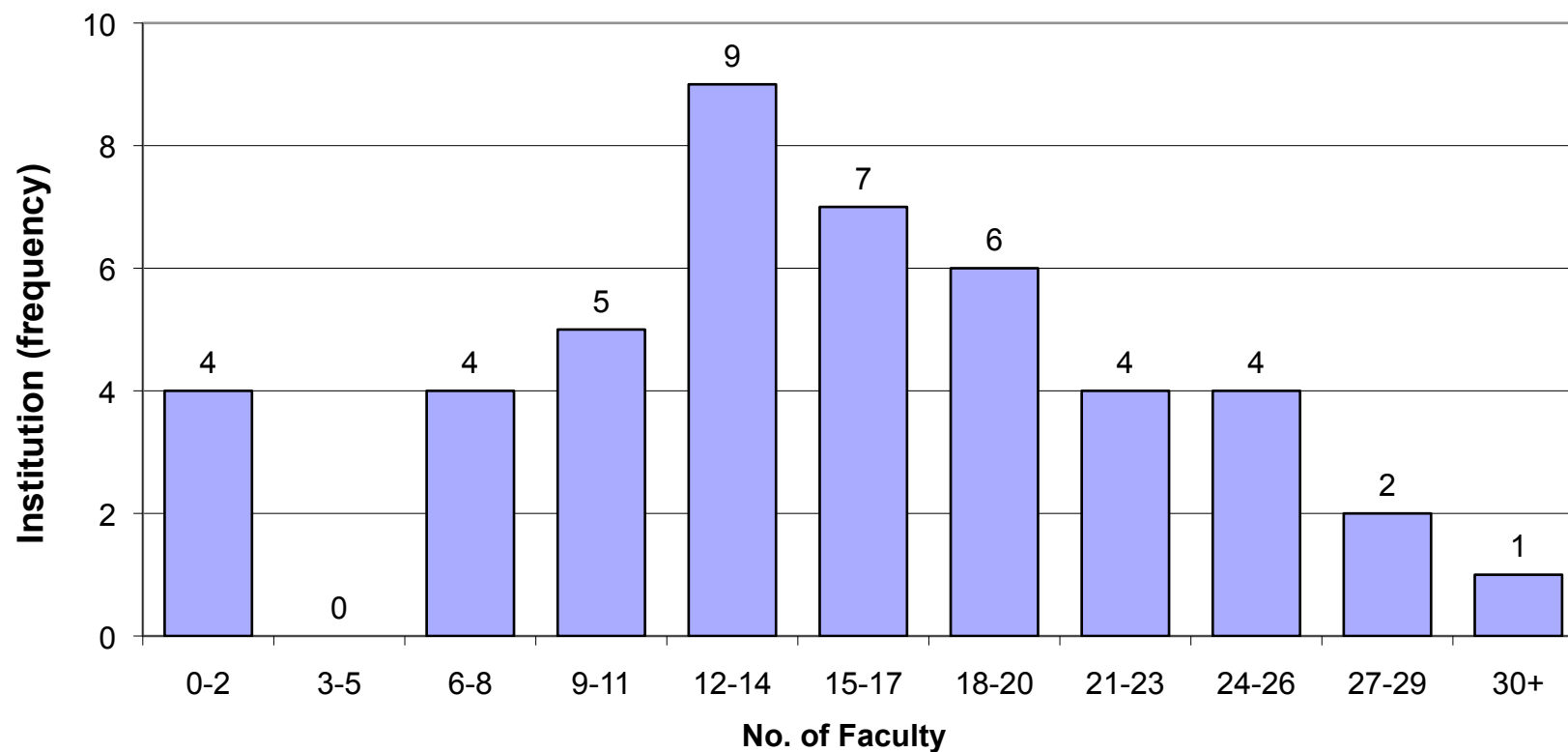
WINONA STATE UNIVERSITY

WORCESTER POLYTECHNIC INSTITUTE

Materials Science and Engineering Survey

Sponsored by the University Materials Council

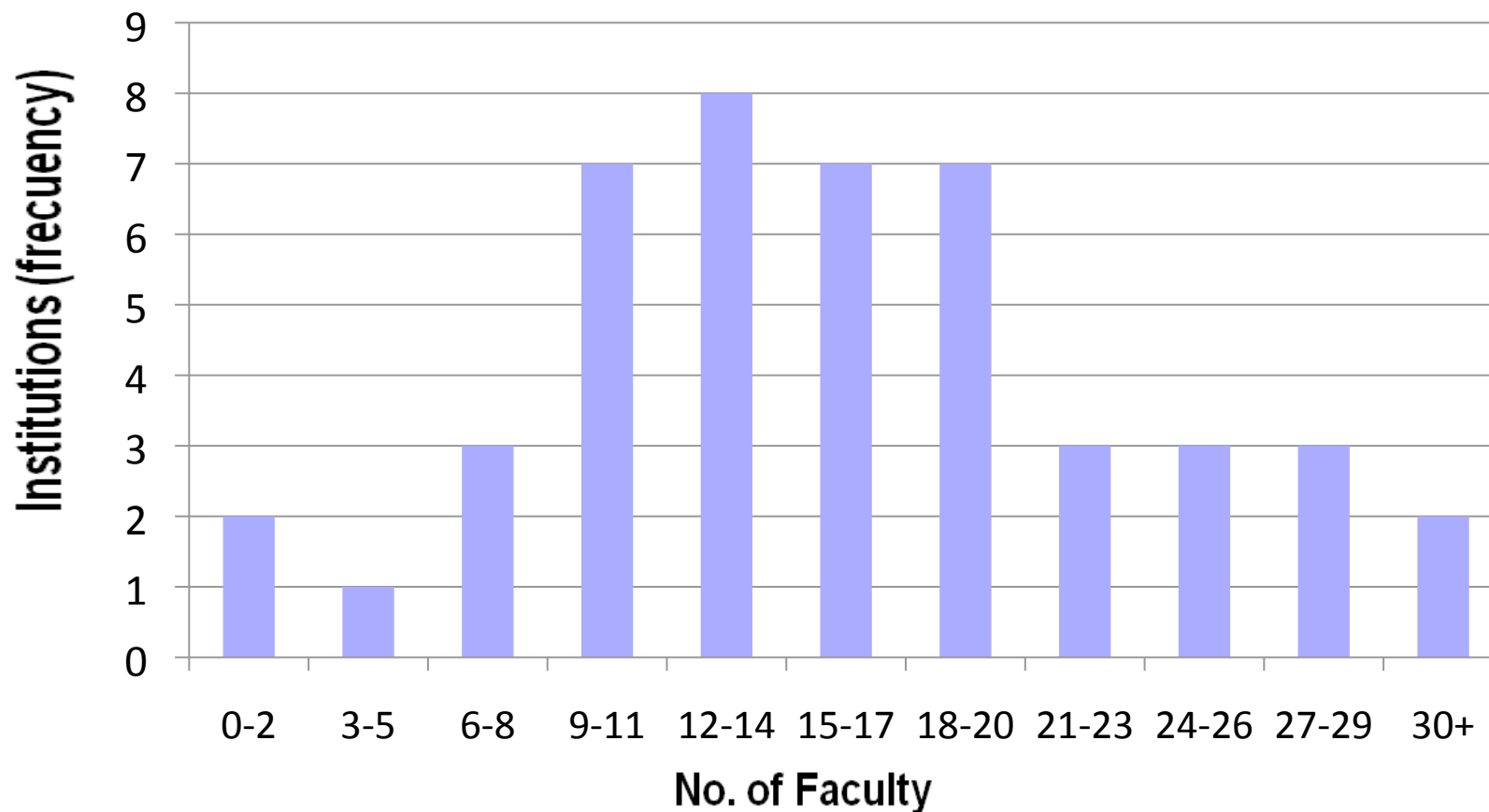
No. of Full Time Equivalent Faculty



Materials Science and Engineering Survey

Sponsored by the University Materials Council

Institution Frequency of Thesis Sponsoring Faculty

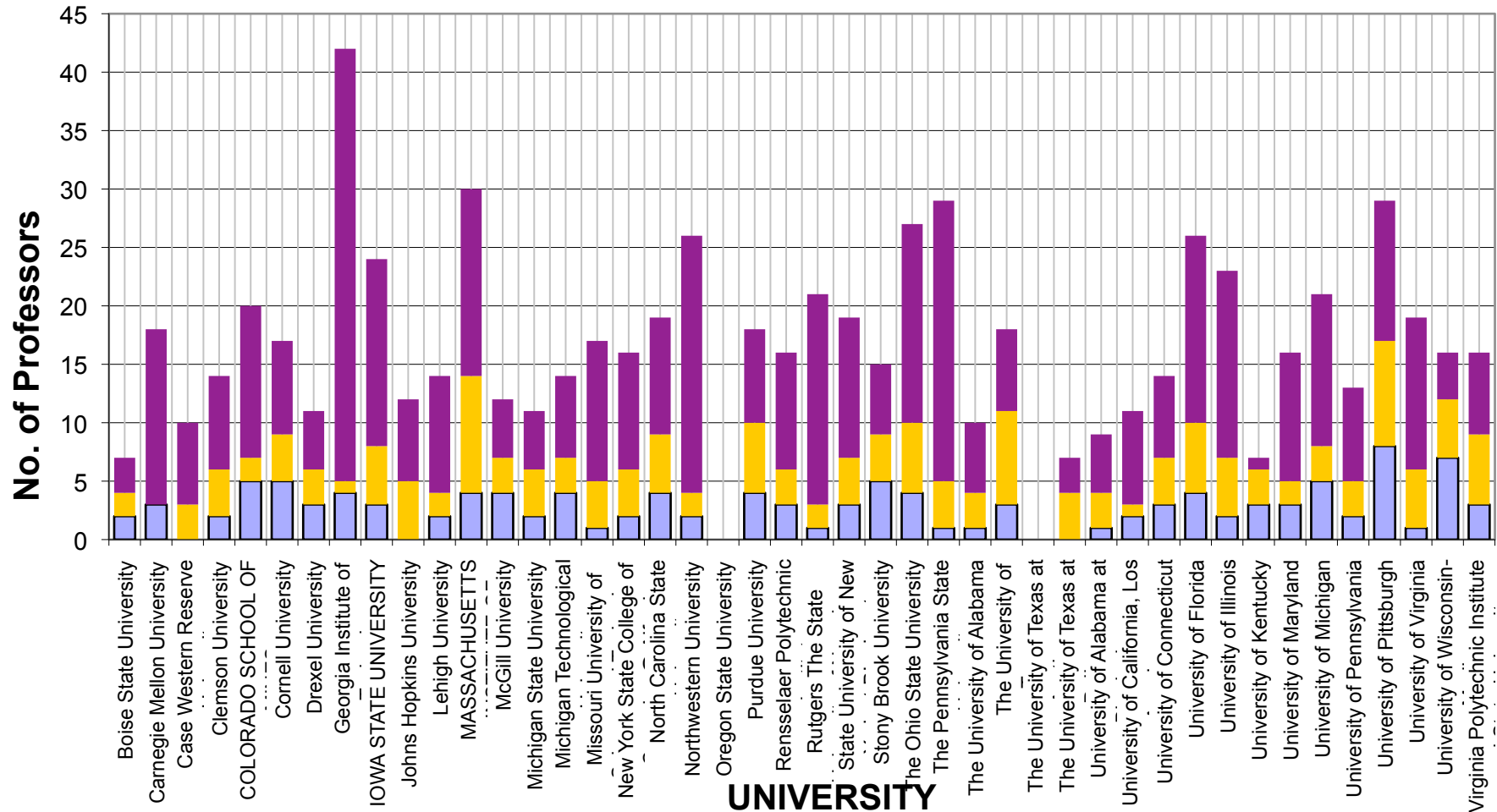


STATISTICS FOR 2009

Materials Science and Engineering Survey

Sponsored by the University Materials Council

No. of Thesis Sponsoring Faculty

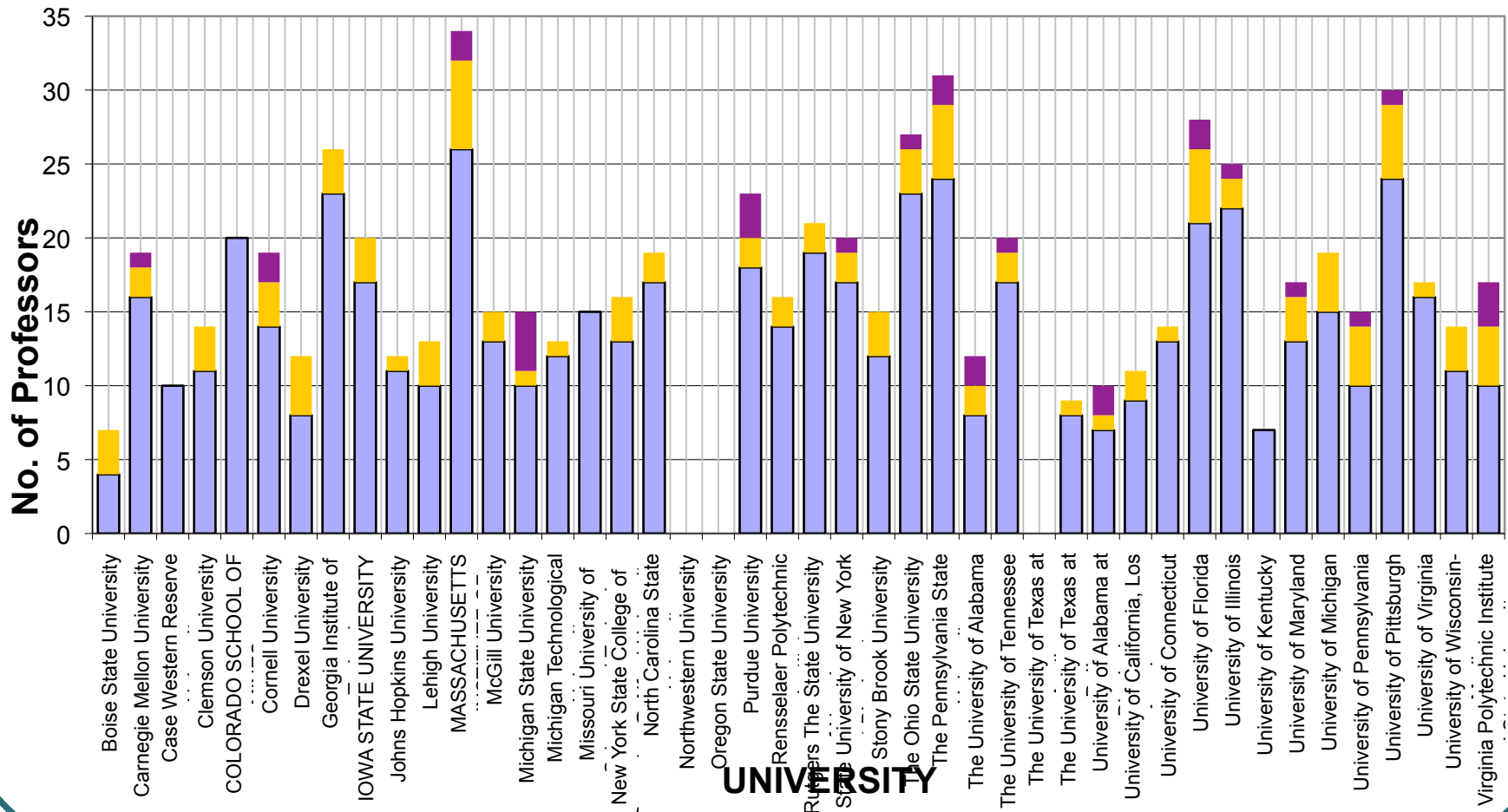


Materials Science and Engineering Survey

Sponsored by the University Materials Council

■ Under rep ■ Female ■ Male

No. of FTE Faculty



Materials Science and Engineering Survey

Sponsored by the University Materials Council



Average Full Professors Salary : **\$135,031.02**

Average Associates Professors Salary: **\$97,390.56**

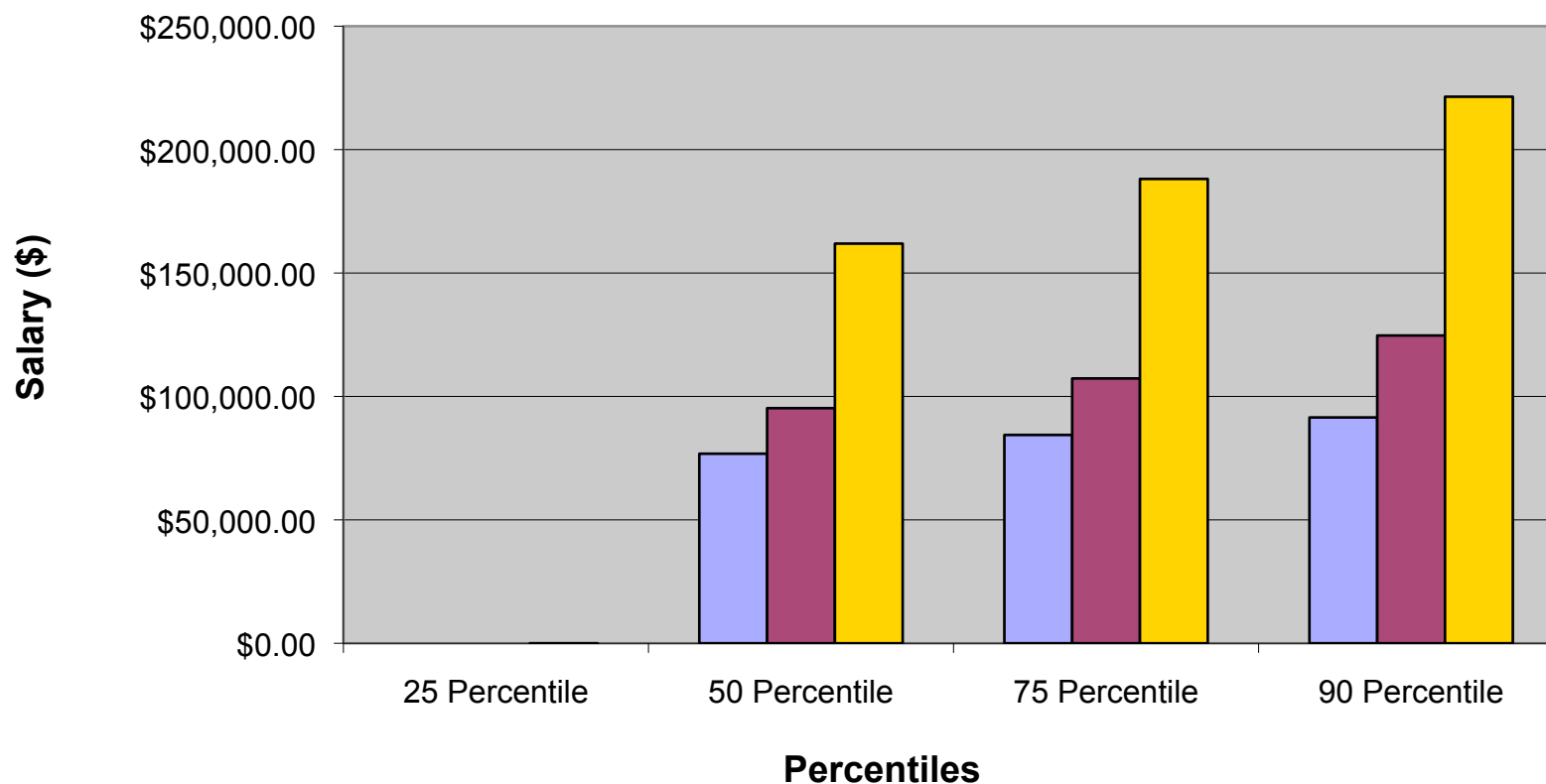
Average Assistant Professors Salary : **\$81,408.24**

Materials Science and Engineering Survey

Sponsored by the University Materials Council

Upper Decile of Each Percentile Group

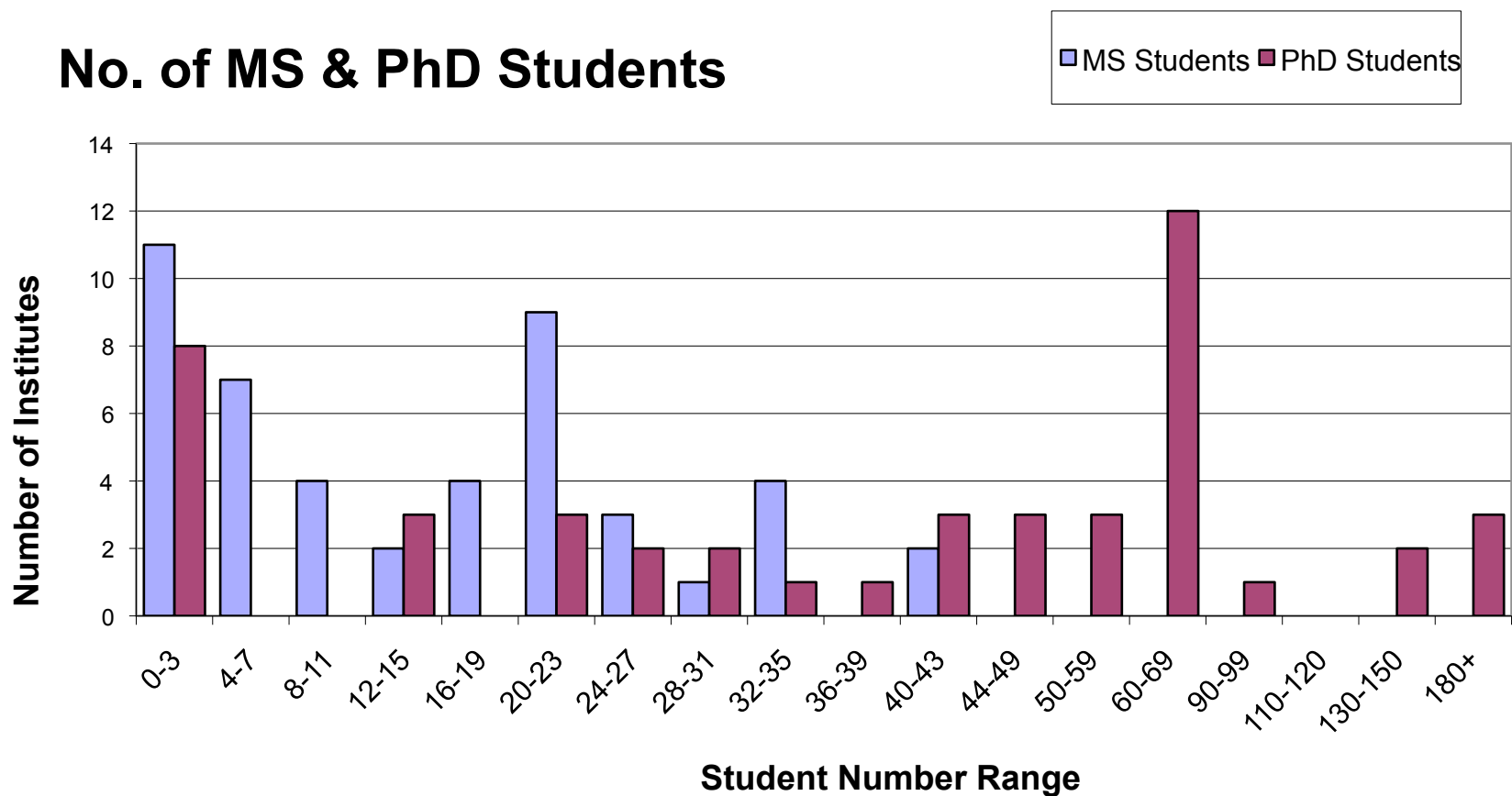
- Assistant Professor
- Associate Professor
- Full Professor



Materials Science and Engineering Survey

Sponsored by the University Materials Council

No. of MS & PhD Students

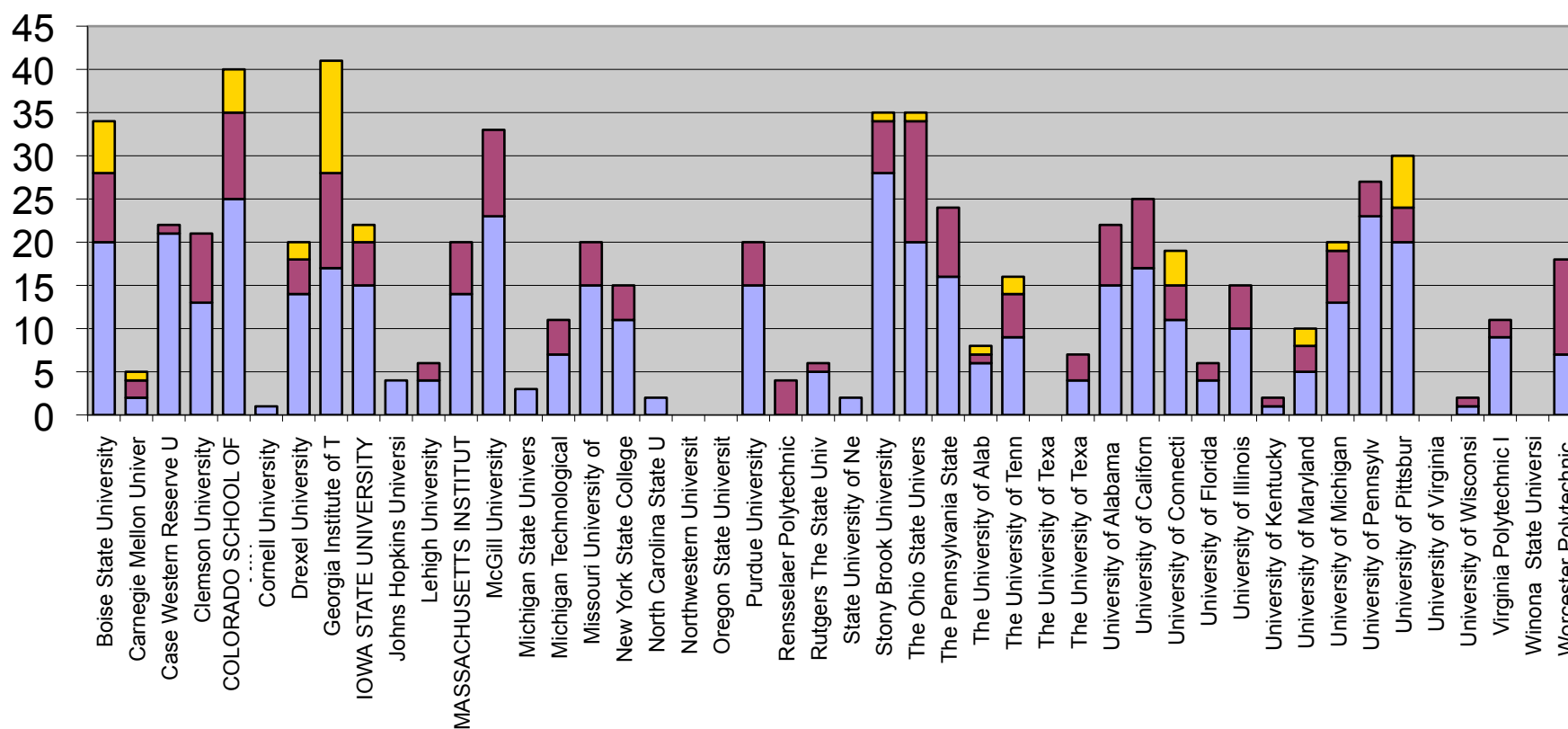


Materials Science and Engineering Survey

Sponsored by the University Materials Council

Total MS Students

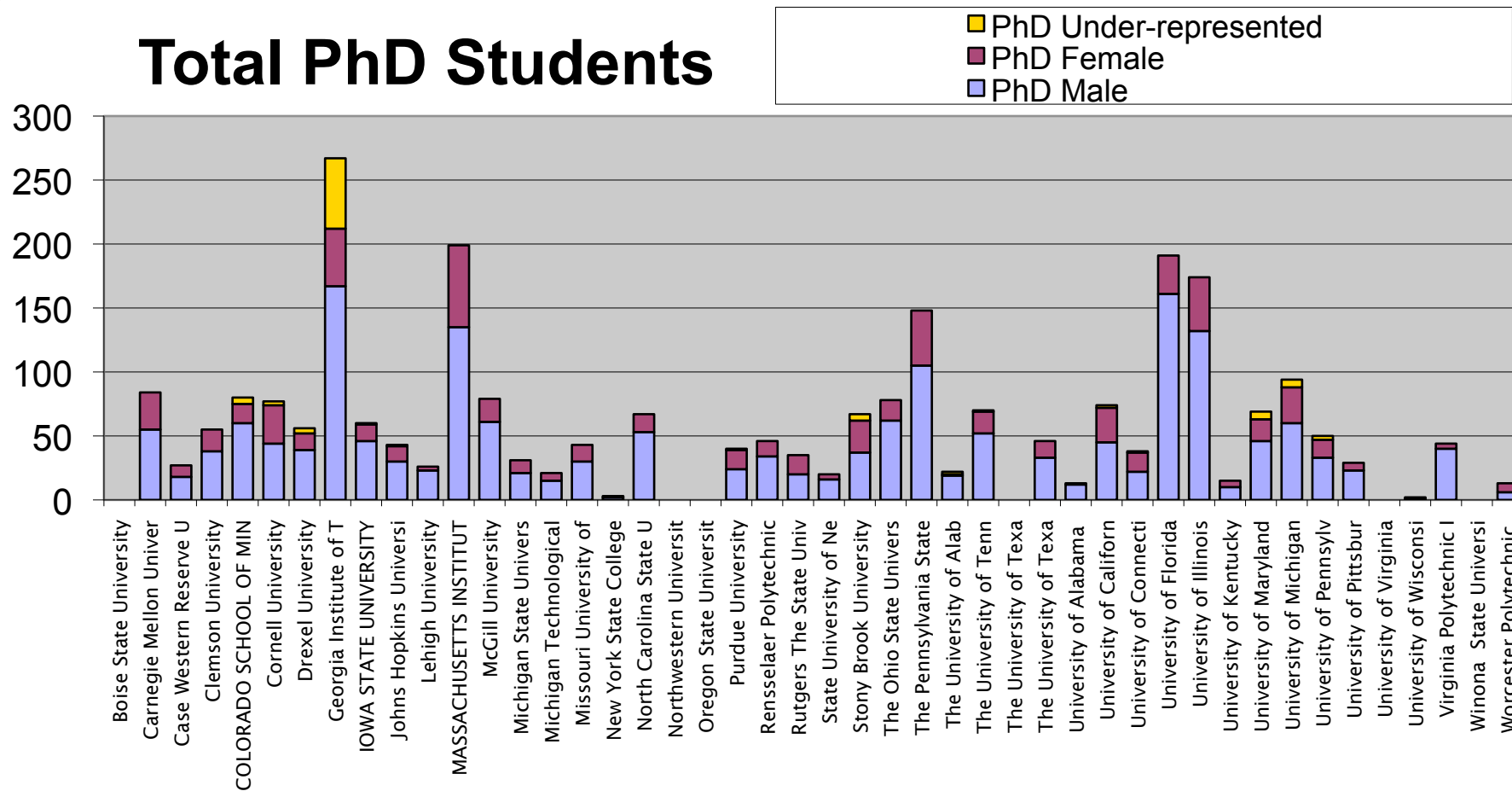
■ MS Under-represented
■ MS Female
■ MS Male



Materials Science and Engineering Survey

Sponsored by the University Materials Council

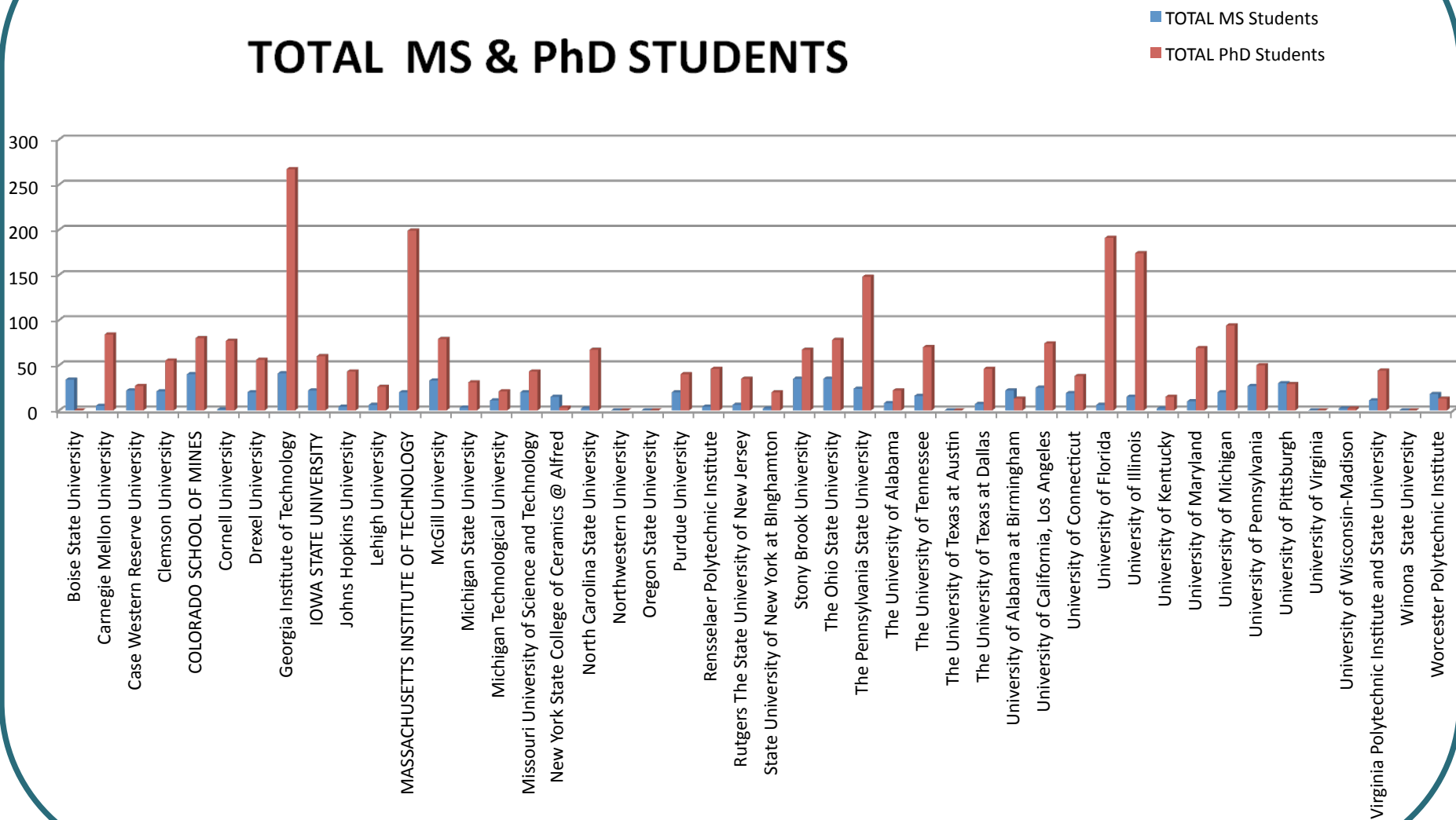
Total PhD Students



Materials Science and Engineering Survey

Sponsored by the University Materials Council

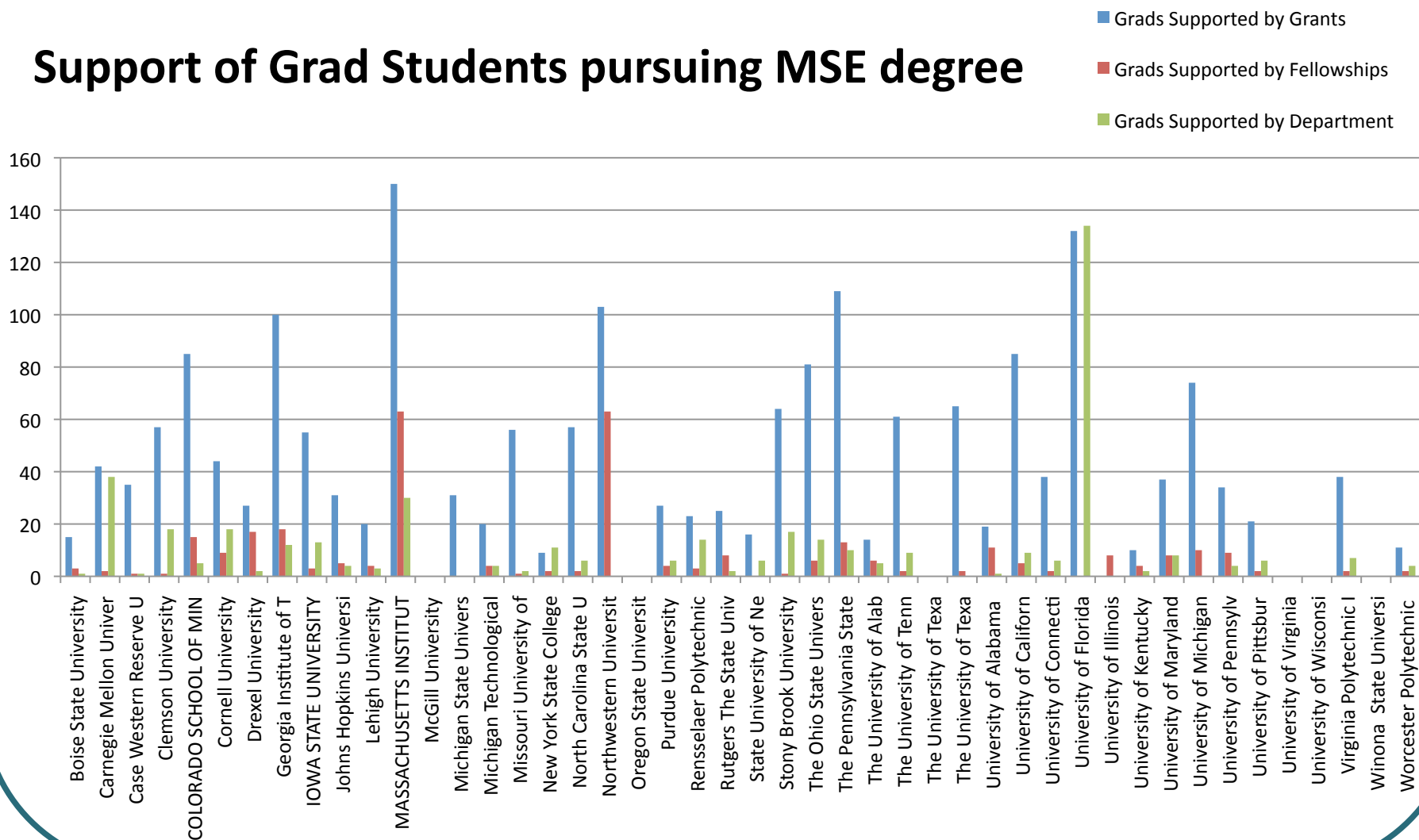
TOTAL MS & PhD STUDENTS



Materials Science and Engineering Survey

Sponsored by the University Materials Council

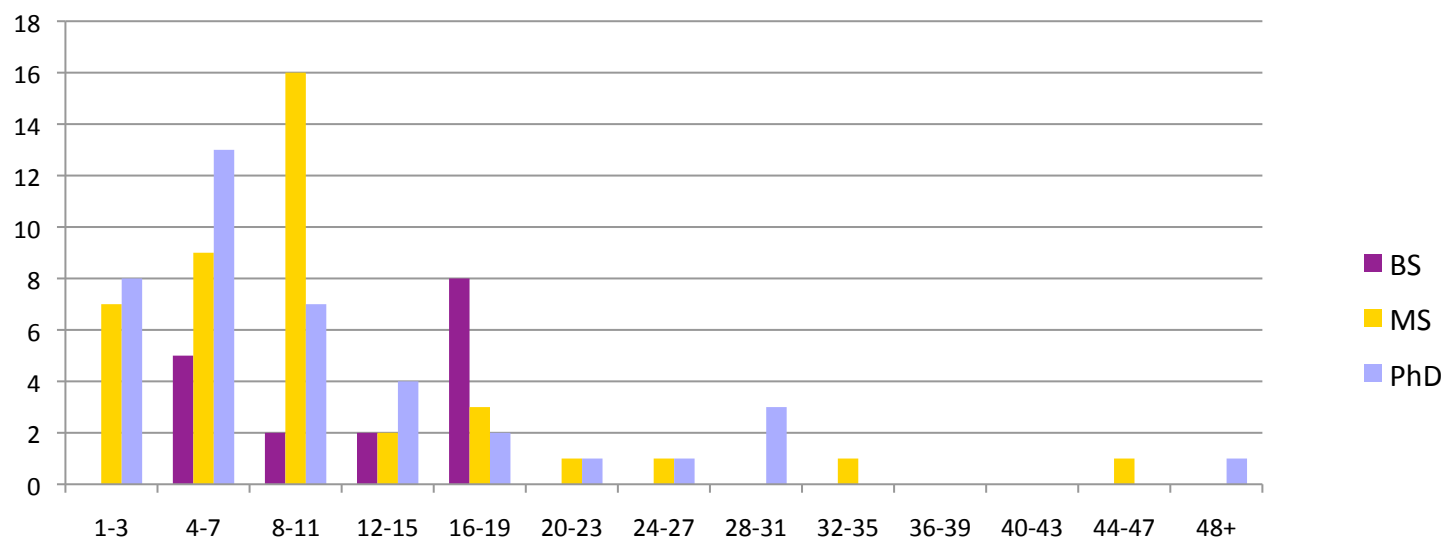
Support of Grad Students pursuing MSE degree



Materials Science and Engineering Survey

Sponsored by the University Materials Council

Degrees Awarded



Materials Science and Engineering Survey

Sponsored by the University Materials Council

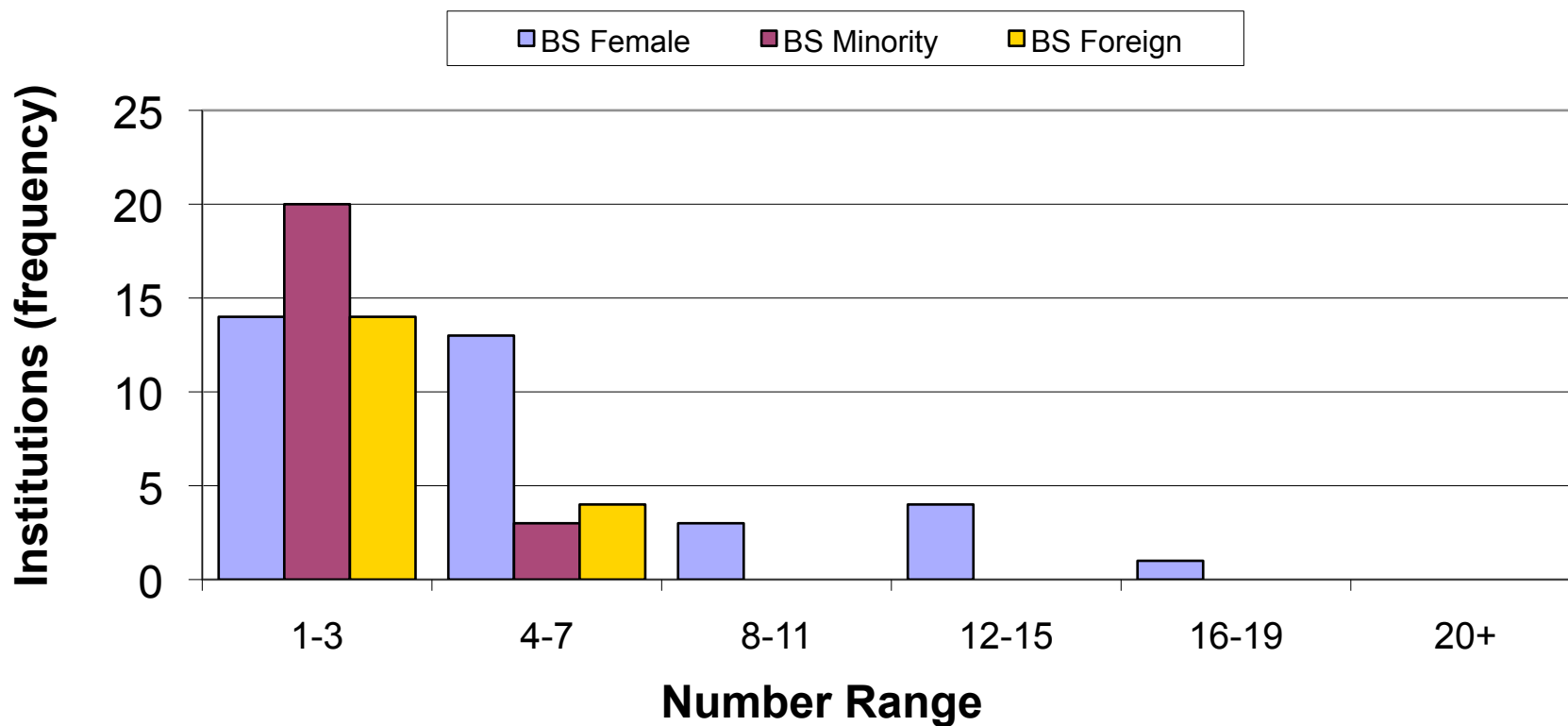
Additional Data

- Average New Assistant Professor salary: **\$84,550**
- Average number of Postdocs: 11
- Average Postdoc salary: **\$ 40,667.52**
- Upper decile Postdoc salary: **\$ 45,785.09**
- Almost all schools permit 3/9 summer salary
- Average teaching assignment: **9 Hours**

Materials Science and Engineering Survey

Sponsored by the University Materials Council

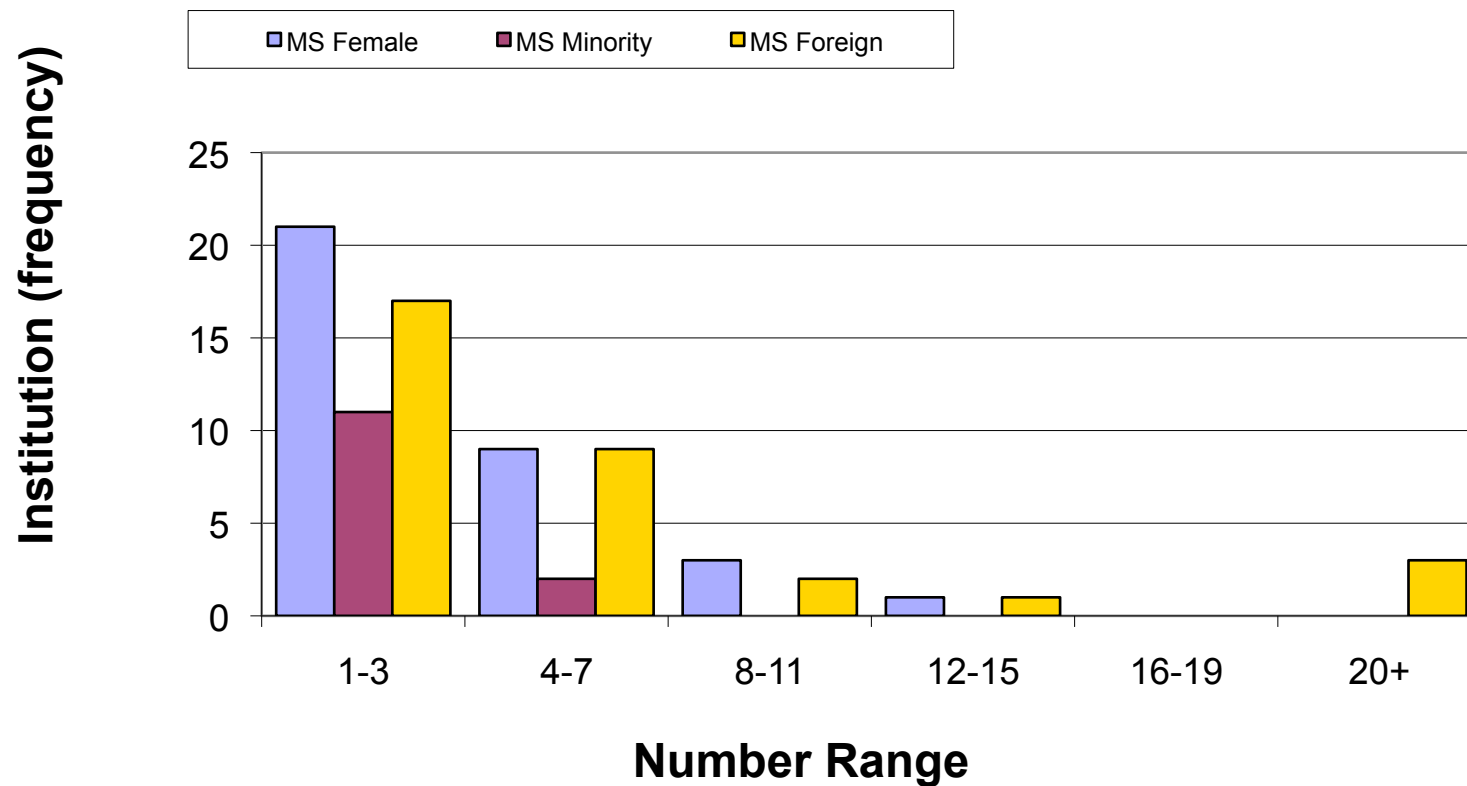
BS Degrees Awarded (Female, Minorities & Foreign)



Materials Science and Engineering Survey

Sponsored by the University Materials Council

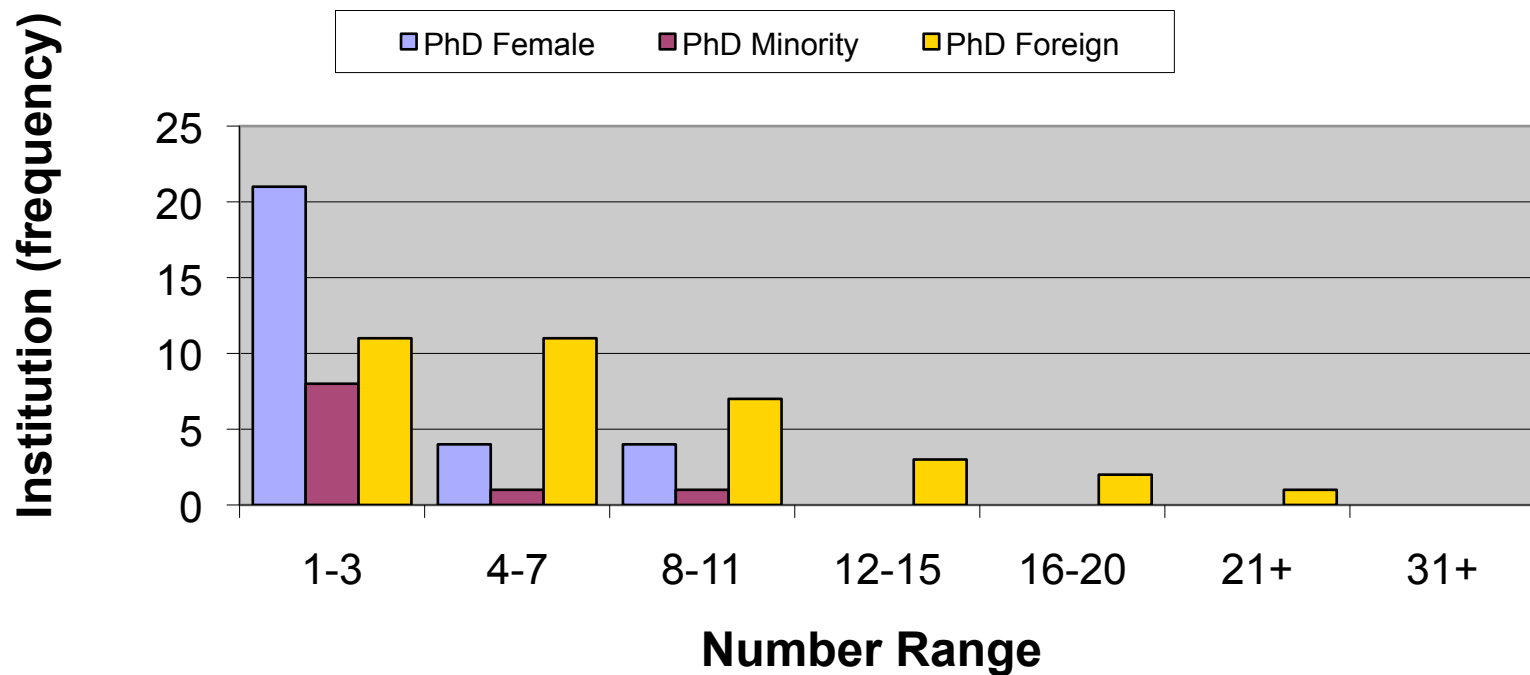
MS Degrees Awarded (Female, Minorities & Foreign)



Materials Science and Engineering Survey

Sponsored by the University Materials Council

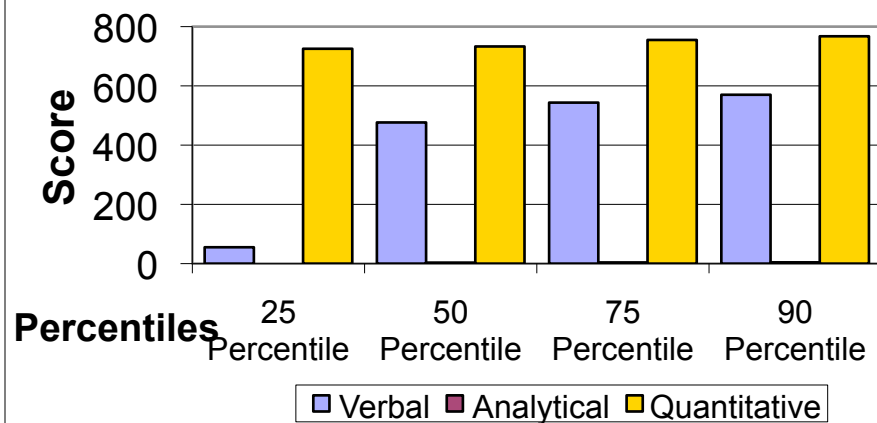
PhD Degrees Awarded (Females, Minorities, Foreign)



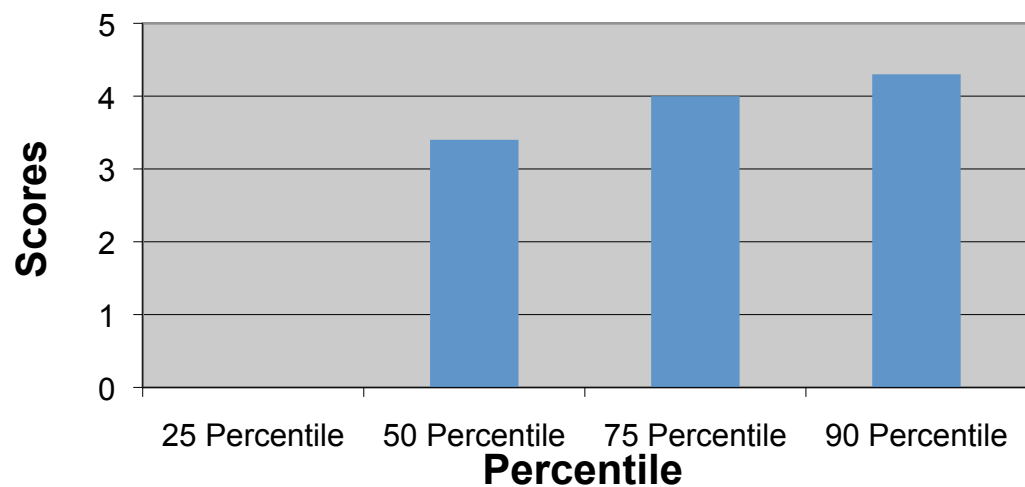
Materials Science and Engineering Survey

Sponsored by the University Materials Council

GRE Scores



GRE Analytical Scores



Average Verbal scores: 463

Average Analytical scores: 4

Average Quantitative scores: 742

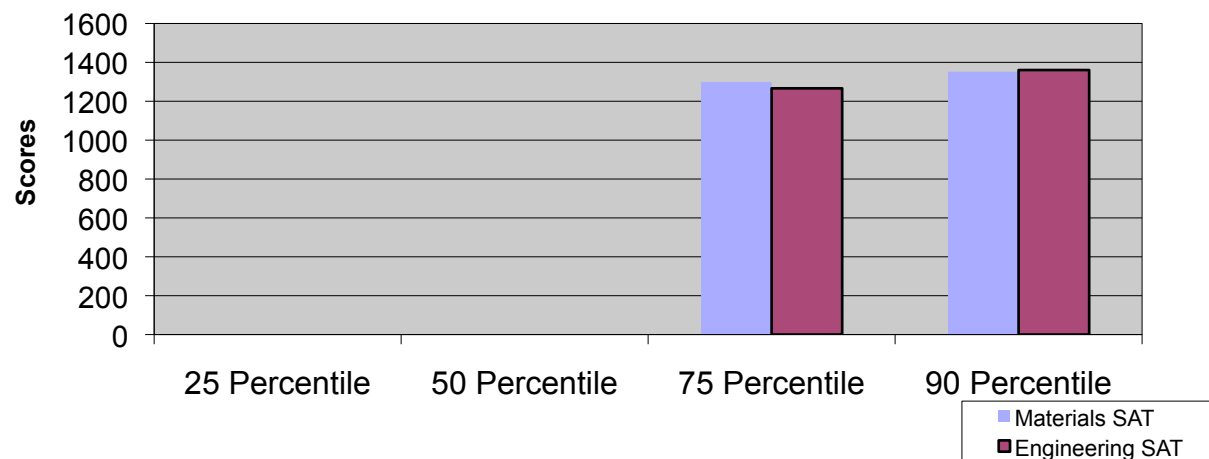
Materials Science and Engineering Survey

Sponsored by the University Materials Council

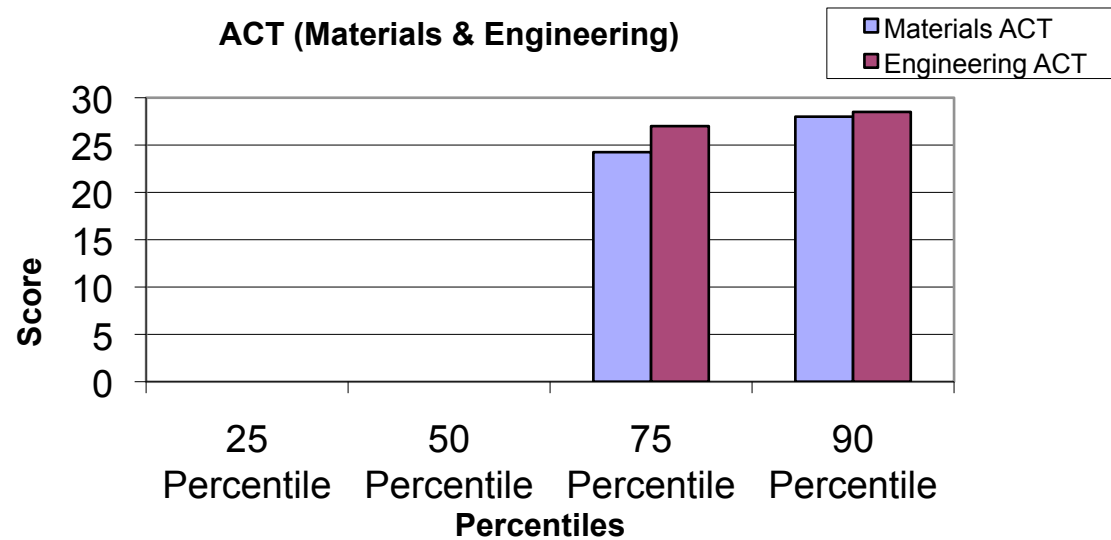
Average MSE SAT Scores: 1390

Average Eng. SAT Scores: 1296

SAT Scores (Materials & Engineering)



ACT (Materials & Engineering)



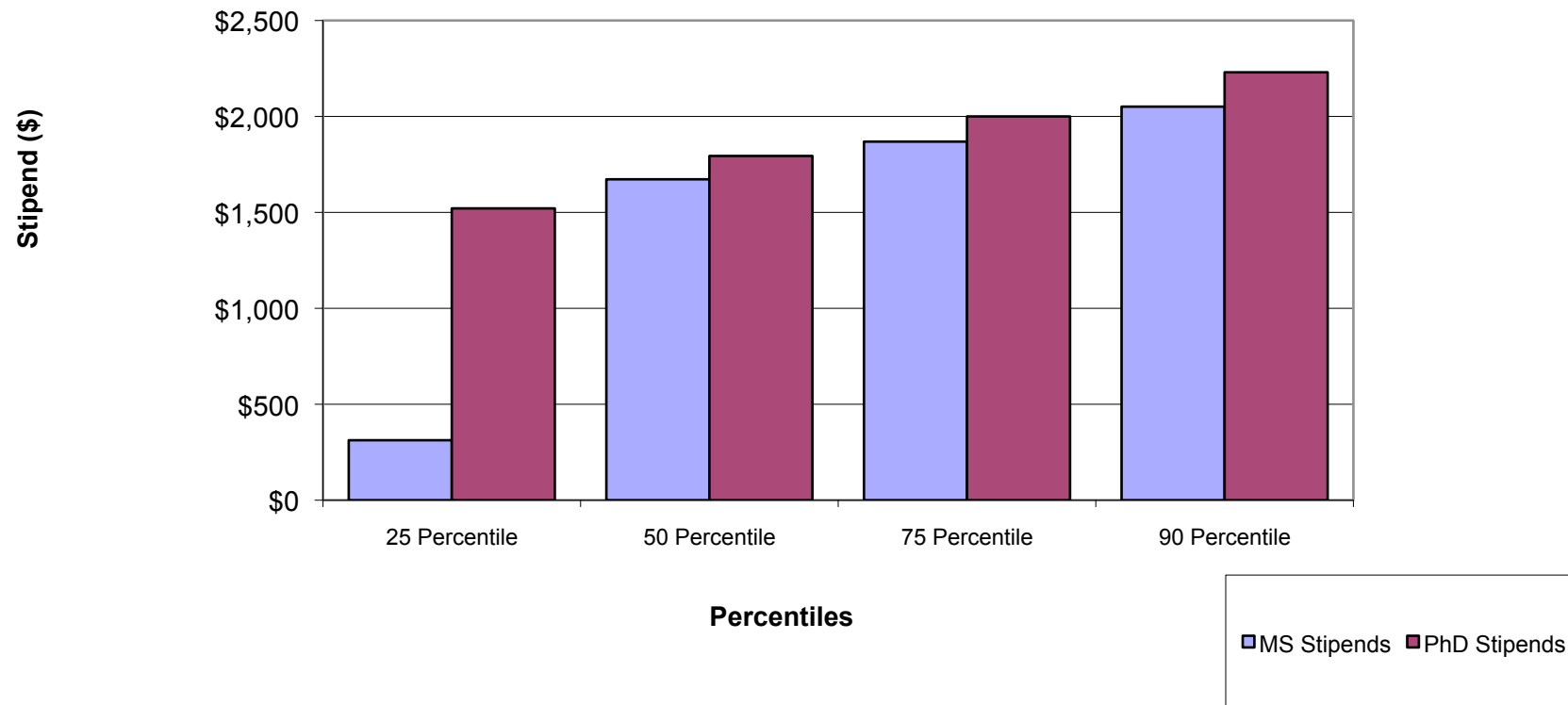
Average MSE ACT Scores: 25

Average Eng. ACT Scores: 26

Materials Science and Engineering Survey

Sponsored by the University Materials Council

Stipends per Month (MS & PhD)



Average MS Stipend

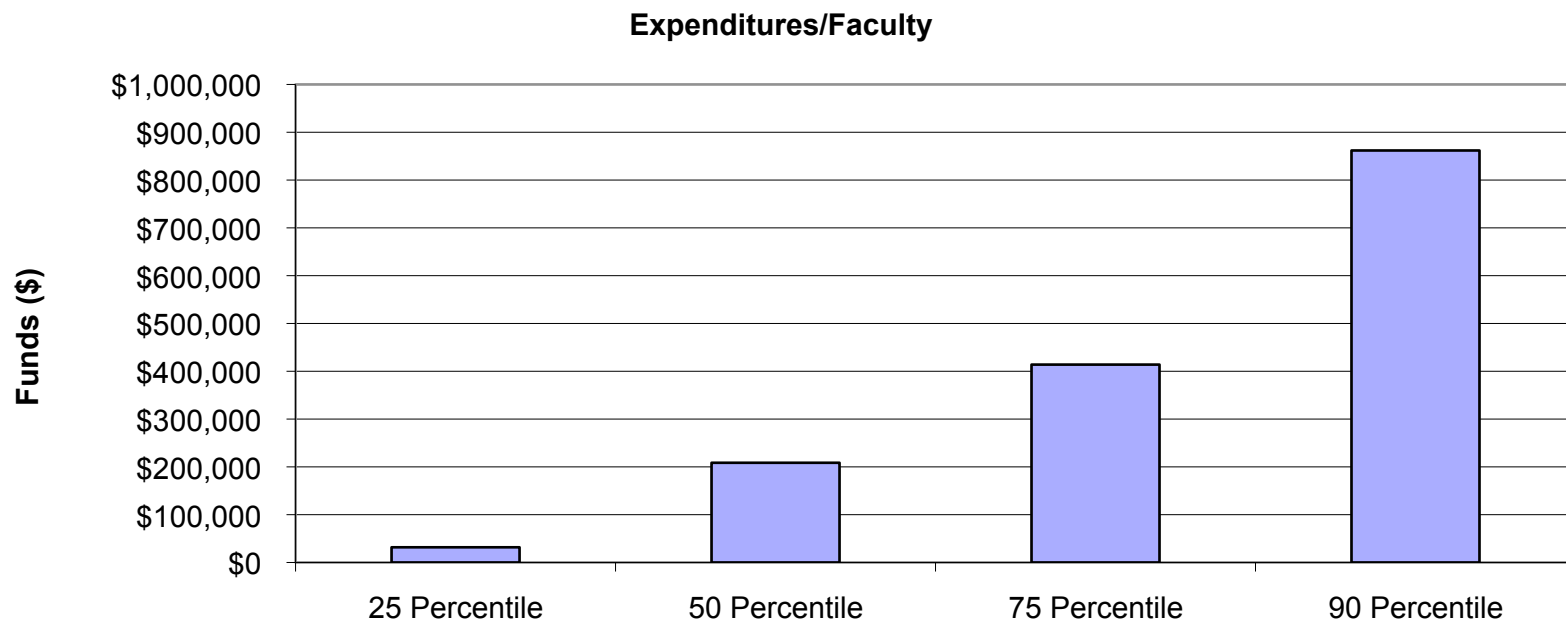
1,983.77

Average PhD Stipend

2,054.73

Materials Science and Engineering Survey

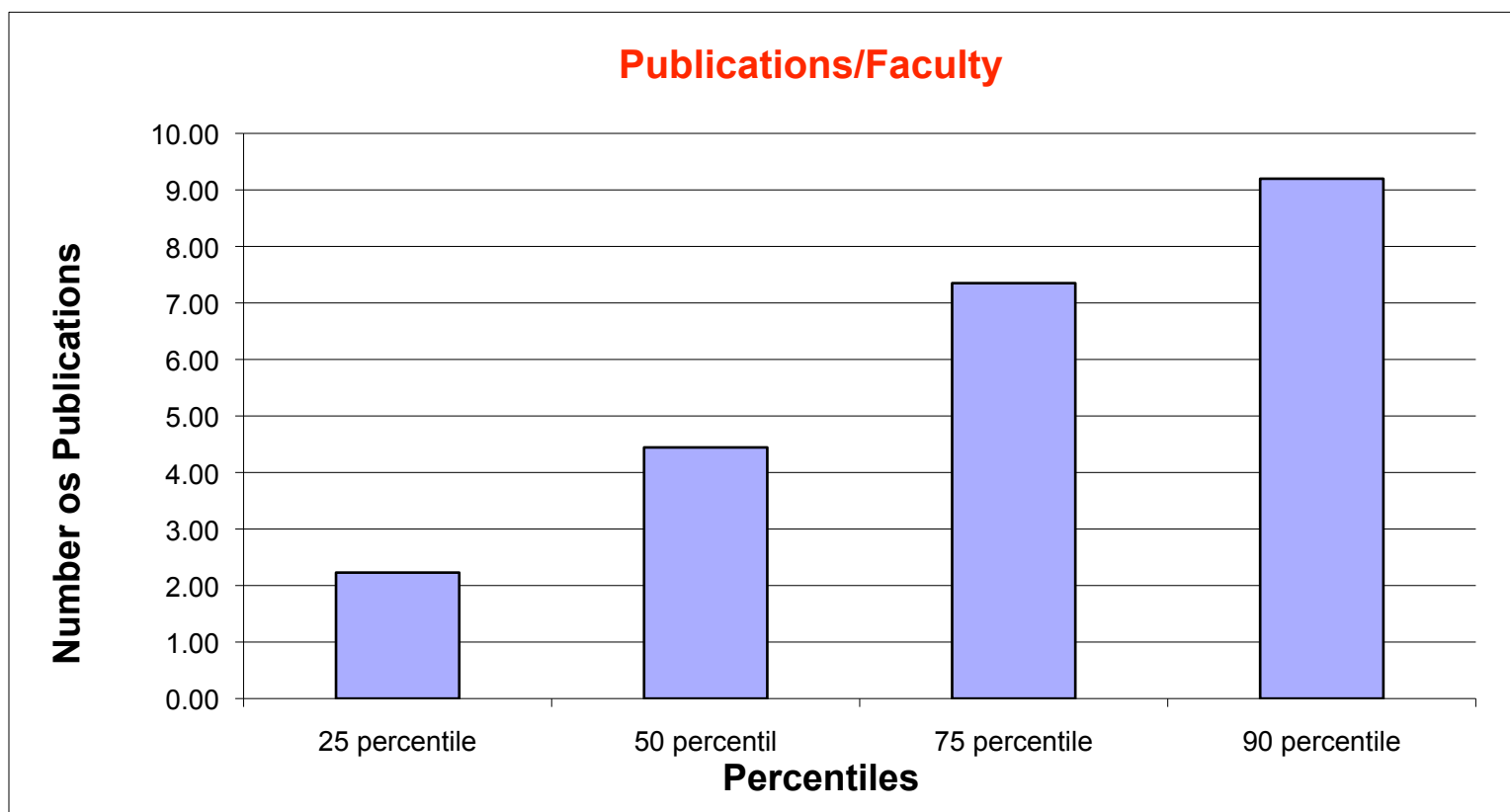
Sponsored by the University Materials Council



Average Funds/Faculty: \$336,947

Materials Science and Engineering Survey

Sponsored by the University Materials Council

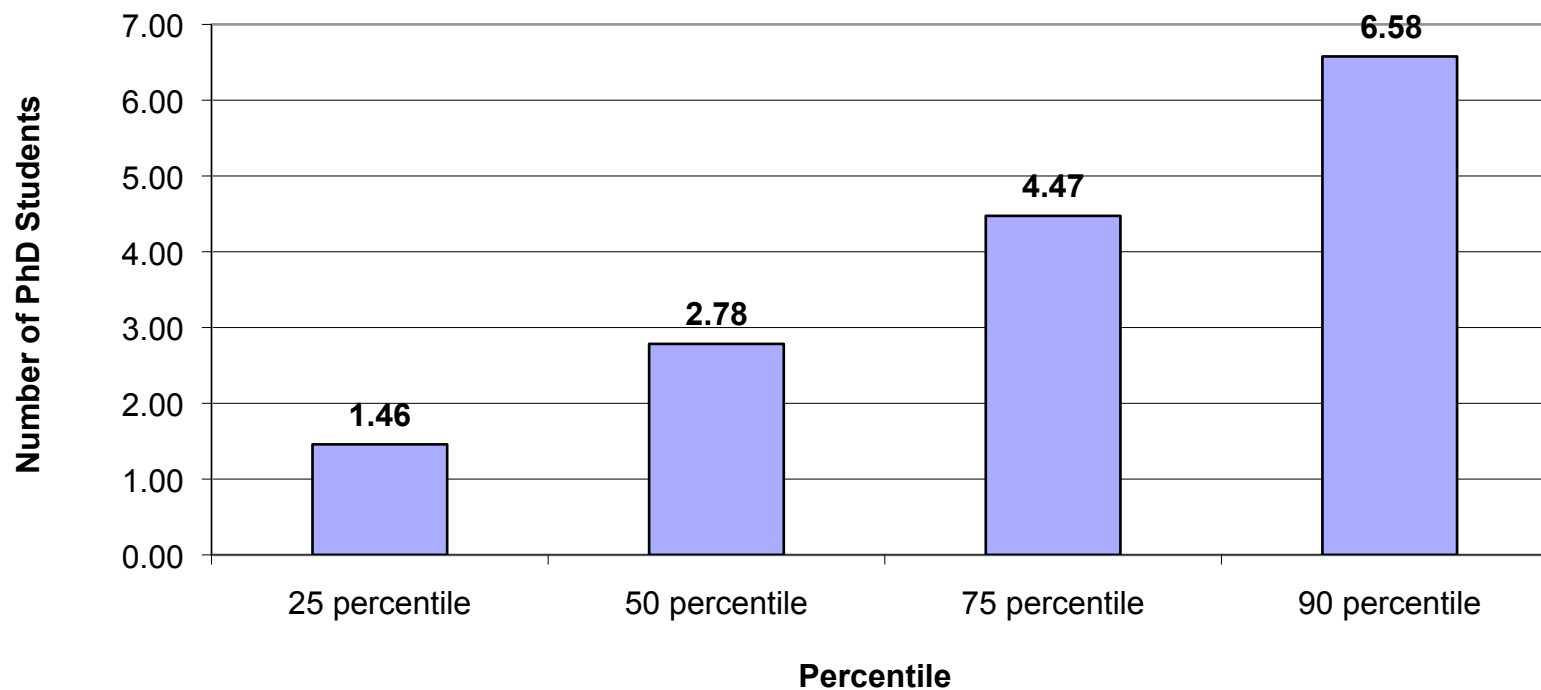


Average Publications/Faculty: 6.22

Materials Science and Engineering Survey

Sponsored by the University Materials Council

PhD/EFT Faculty



Average 3.54

Max 7.57

Min 0.13

Materials Science and Engineering Survey

Sponsored by the University Materials Council

Distribution of Students

